



GRE

GRADUATE RECORD EXAMINATIONS®

Practice General Test # 1

Large Print (18 point) Edition

Section 1—Verbal Reasoning

Section 2—Verbal Reasoning



Copyright © 2009 by Educational Testing Service. All rights reserved. ETS, the ETS logo, GRADUATE RECORD EXAMINATIONS, and GRE are registered trademarks of Educational Testing Service (ETS) in the United States and other countries.



752503

NO TEST MATERIAL ON THIS PAGE

NO TEST MATERIAL ON THIS PAGE

Revised Graduate Record Examinations General Test Practice Test # 1

Instructions for the Verbal Reasoning and Quantitative Reasoning Sections

For your convenience, these instructions are included both in the test book for Sections 1 and 2, and in the test book for Sections 3 and 4. The instructions are the same in both locations.

As a reminder, standard timing for each section of the test is shown in the table below:

Section Order	Section Name	Standard Time
Analytical Writing 1	Analyze an Issue	30 minutes
Analytical Writing 2	Analyze an Argument	30 minutes
1	Verbal Reasoning	35 minutes
2	Verbal Reasoning	35 minutes
3	Quantitative Reasoning	40 minutes
4	Quantitative Reasoning	40 minutes

GO ON TO THE NEXT PAGE.

Important Notes

In the actual test, your scores for the multiple-choice sections will be determined by the number of questions you answer correctly. Nothing is subtracted from a score if you answer a question incorrectly.

Therefore, to maximize your scores it is better for you to guess at an answer than not to respond at all. Work as rapidly as you can without losing accuracy. Do not spend too much time on questions that are too difficult for you. Go on to the other questions and come back to the difficult ones later.

Some or all of the passages in this test have been adapted from published material to provide the examinee with significant problems for analysis and evaluation. To make the passages suitable for testing purposes, the style, content, or point of view of the original may have been altered. The ideas contained in the passages do not necessarily represent the opinions of the Graduate Record Examinations Board or Educational Testing Service.

You may use a calculator in the Quantitative Reasoning sections only. You will be provided with a basic calculator and cannot use any other calculator, except as an approved accommodation.

GO ON TO THE NEXT PAGE.

Marking Your Answers

In the actual test, all answers must be marked in the test book.
The following instructions describe how answers must be filled in.

Your answers will be hand-scored, so **make sure your marks are clear and unambiguous**. Examples of acceptable and unacceptable marks will be given with the sample questions.

GO ON TO THE NEXT PAGE.

Question Formats

This practice test may include questions that would not be used in an actual test administered in an alternate format because they have been determined to be less suitable for presentation in such formats.

The questions in these sections have several different formats. A brief description of these formats and instructions for entering your answer choices are given below.

Multiple-Choice Questions—Select One Answer Choice

These standard multiple-choice questions require you to select just one answer choice from a list of options. You will receive credit only if you mark the **single** correct answer choice and no other.

Example:

What city is the capital of France?

- A Rome
- B Paris
- C London
- D Cairo

GO ON TO THE NEXT PAGE.

Acceptable Marks

(A) Rome

(B) Paris

(C) London

(D) Cairo

(A) Rome

(X) Paris

(C) London

(D) Cairo

(A) Rome

(B) Paris

(C) London

(D) Cairo

(A) Rome

(B) Paris

(C) London

(D) Cairo

(A) Rome

(B) Paris

(C) London

(D) Cairo

(A) Rome

(●) Paris

(C) London

(D) Cairo

(A) Rome

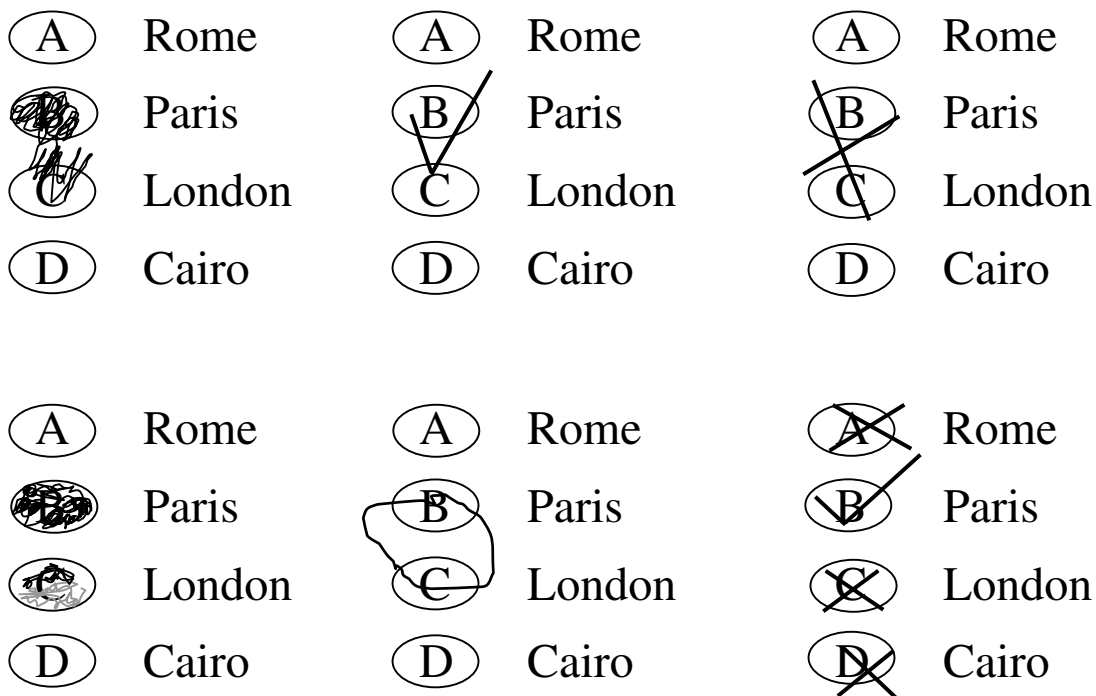
(B) Paris

(C) London

(D) Cairo

GO ON TO THE NEXT PAGE.

Unacceptable Marks



If you change an answer, be sure that all previous marks are erased completely. Stray marks and incomplete erasures may be read as intended answers. Blank areas of the test book may be used for working out answers, but do not work out answers near the answer-entry areas. Scratch paper will not be provided, except as an approved accommodation.

GO ON TO THE NEXT PAGE.

Multiple-Choice Questions—Select One or More Answer Choices

Some of these questions specify how many answer choices you must select; others require you to select all that apply. In either case, to receive credit **all** of the correct answer choices must be marked. These questions are distinguished by the use of a square box to be marked to select an answer choice.

Example:

Select all that apply.

Which of the following countries are in Africa?

- A China
- B Congo
- C France
- D Kenya

GO ON TO THE NEXT PAGE.

Acceptable Marks

- A China
- B Congo
- C France
- D Kenya

- A China
- B Congo
- C France
- D Kenya

- A China
- B Congo
- C France
- D Kenya

- A China
- B Congo
- C France
- D Kenya

Unacceptable Marks

- A China
- B Congo
- C France
- D Kenya

- A China
- B Congo
- C France
- D Kenya

- A China
- B Congo
- C France
- D Kenya

- A China
- B Congo
- C France
- D Kenya

- A China
- B Congo
- C France
- D Kenya

- A China
- B Congo
- C France
- D Kenya

GO ON TO THE NEXT PAGE.

Column Format Questions

This question type presents the answer choices in columns. You must pick one answer choice from each column. You will receive credit only if you mark the correct answer choice **in each column**.

Example:

Complete the following sentence.

(i) _____ is the capital of (ii)_____.

Blank (i)

Blank (ii)

<input checked="" type="radio"/> A Paris	<input type="radio"/> D Canada
<input type="radio"/> B Rome	<input checked="" type="radio"/> E France
<input type="radio"/> C Cairo	<input type="radio"/> F China

GO ON TO THE NEXT PAGE.

Numeric-Entry Questions

These questions require a number to be entered by circling entries in a grid. If you are not filling in your own answers, your scribe should be familiar with these instructions.

1. Your answer may be an integer, a decimal, or a fraction, and it may be negative.
2. Equivalent forms of the correct answer, such as 2.5 and 2.50, are all correct. Although fractions do not need to be reduced to lowest terms, they may need to be reduced to fit in the grid.
3. Enter the exact answer unless the question asks you to round your answer.
4. If a question asks for a fraction, the grid will have a built-in division slash (/). Otherwise, the grid will have a decimal point.
5. Start your answer in any column, space permitting. Circle no more than one entry in any column of the grid. Columns not needed should be left blank.
6. Write your answer in the boxes at the top of the grid and circle the corresponding entries. **You will receive credit only if your grid entries are clearly marked, regardless of the number written in the boxes at the top.**

GO ON TO THE NEXT PAGE.

Examples of acceptable ways to use the grid:

Integer answer: 502 (either position is correct)

		5	0	2			
-
	0	0	⓪	0	0	0	0
	1	1	1	1	1	1	1
	2	2	②	2	2	2	2
	3	3	3	3	3	3	3
	4	4	4	4	4	4	4
	5	⑤	5	5	5	5	5
	6	6	6	6	6	6	6
	7	7	7	7	7	7	7
	8	8	8	8	8	8	8
	9	9	9	9	9	9	9

				5	0	2	
-
	0	0	0	0	⓪	0	0
	1	1	1	1	1	1	1
	2	2	2	2	2	②	2
	3	3	3	3	3	3	3
	4	4	4	4	4	4	4
	5	5	5	⑤	5	5	5
	6	6	6	6	6	6	6
	7	7	7	7	7	7	7
	8	8	8	8	8	8	8
	9	9	9	9	9	9	9

GO ON TO THE NEXT PAGE.

Decimal Answer: -4.13

-				4	.	1	3
⊖	⊙	.	.
	0	0	0	0	0	0	0
	1	1	1	1	1	①	1
	2	2	2	2	2	2	2
	3	3	3	3	3	3	③
	4	4	4	④	4	4	4
	5	5	5	5	5	5	5
	6	6	6	6	6	6	6
	7	7	7	7	7	7	7
	8	8	8	8	8	8	8
	9	9	9	9	9	9	9

GO ON TO THE NEXT PAGE.

Fraction Answer: $-\frac{2}{10}$

-		2		/	1	0	
⊖	0	0	0		0	⓪	0
	1	1	1		①	1	1
	2	②	2		2	2	2
	3	3	3		3	3	3
	4	4	4		4	4	4
	5	5	5		5	5	5
	6	6	6		6	6	6
	7	7	7		7	7	7
	8	8	8		8	8	8
	9	9	9		9	9	9

GO ON TO THE NEXT PAGE.

The first multiple-choice section follows. In an actual test, your supervisor will tell you when to begin the test.

Section 1
Verbal Reasoning
25 Questions

Question 1 is based on the following reading passage.

Centuries ago, the Maya of Central America produced elaborate, deeply cut carvings in stone. The carvings would have required a cutting tool of hard stone or metal. Iron-ore deposits exist throughout Central America, but apparently the Maya never developed the technology to use them and the metals the Maya are known to have used, copper and gold, would not have been hard enough. Therefore, the Maya must have used stone tools to make these carvings.

GO ON TO THE NEXT PAGE.

1. Select and indicate the best answer from among the five answer choices:

Which of the following, if true, most seriously weakens the argument?

- (A) In various parts of the world, civilizations that could not make iron from ore fashioned tools out of fragments of iron from meteorites.
- (B) All the metallic Mayan artifacts that have been found by archaeologists are made of metals that are too soft for carving stone.
- (C) The stone out of which these carvings were made is harder than the stone used by other Central American peoples.
- (D) The technique that the Maya used to smelt gold and some other metals could not have been easily applied to the task of extracting iron from iron ore.
- (E) Archaeologists disagree about how certain stone tools that have been found among Mayan ruins were used.

GO ON TO THE NEXT PAGE.

Questions 2 and 3 are based on the following reading passage.
(A word is boldfaced and underlined for reference in answering question 3.)

In early-twentieth-century England, it was fashionable to claim that only a completely new style of writing could **address** a world undergoing unprecedented transformation—just as one literary
Line critic recently claimed that only the new “aesthetic of exploratory
5 excess” can **address** a world undergoing . . . well, you know. Yet in early-twentieth-century England, T. S. Eliot, a man fascinated by the “presence” of the past, wrote the most innovative poetry of his time. The lesson for today’s literary community seems obvious:
10 a reorientation toward tradition would benefit writers no less than readers. But if our writers and critics indeed respect the novel’s rich tradition (as they claim to), then why do they disdain the urge to tell an exciting story?

GO ON TO THE NEXT PAGE.

2. Select and indicate the best answer from among the five answer choices:

The author of the passage suggests that present-day readers would particularly benefit from which of the following changes on the part of present-day writers and critics?

- (A) An increased focus on the importance of engaging the audience in a narrative
 - (B) Modernization of the traditional novelistic elements already familiar to readers
 - (C) Embracing aspects of fiction that are generally peripheral to the interest of readers
 - (D) A greater recognition of how the tradition of the novel has changed over time
 - (E) A better understanding of how certain poets such as Eliot have influenced fiction of the present time
3. Select and indicate the best answer from among the five answer choices:

The word “address” appears underlined and in boldface twice in the first sentence of the passage (lines 2-5). In the context of the passage as a whole, “address” is closest in meaning to

- (A) reveal
- (B) belie
- (C) speak to
- (D) direct attention toward
- (E) attempt to remediate

GO ON TO THE NEXT PAGE.

Question 4 is based on the following reading passage.

Electric washing machines, first introduced in the United States in 1925, significantly reduced the amount of time spent washing a given amount of clothes, yet the average amount of time households
Line spent washing clothes increased after 1925. This increase is partially
5 accounted for by the fact that many urban households had previously sent their clothes to professional laundries. But the average amount of time spent washing clothes also increased for rural households with no access to professional laundries.

GO ON TO THE NEXT PAGE.

4. Select and indicate the best answer from among the five answer choices:

Which of the following, if true, most helps to explain why the time spent washing clothes increased in rural areas?

- (A) People with access to an electric washing machine typically wore their clothes many fewer times before washing them than did people without access to electric washing machines.
- (B) Households that had sent their clothes to professional laundries before 1925 were more likely than other households to purchase an electric washing machine when they became available.
- (C) People living in urban households that had previously sent their clothes to professional laundries typically owned more clothes than did people living in rural households.
- (D) The earliest electric washing machines required the user to spend much more time beside the machine than do modern electric washing machines.
- (E) In the 1920s and 1930s the proportion of rural households with electricity was smaller than the proportion of urban households with electricity.

GO ON TO THE NEXT PAGE.

Directions for questions 5 through 7:

Each of the following questions includes a short text with a blank, indicating that something has been omitted. Select the entry that best completes the text.

5. In the 1950s, the country's inhabitants were _____: most of them knew very little about foreign countries.

- (A) partisan
- (B) erudite
- (C) insular
- (D) cosmopolitan
- (E) imperturbable

GO ON TO THE NEXT PAGE.

6. Since she believed him to be both candid and trustworthy, she refused to consider the possibility that his statement had been _____.
- Ⓐ irrelevant
 - Ⓑ facetious
 - Ⓒ mistaken
 - Ⓓ critical
 - Ⓔ insincere
7. It is his dubious distinction to have proved what nobody would think of denying, that Romero at the age of sixty-four writes with all the characteristics of _____.
- Ⓐ maturity
 - Ⓑ fiction
 - Ⓒ inventiveness
 - Ⓓ art
 - Ⓔ brilliance

GO ON TO THE NEXT PAGE.

Questions 8 through 11 are based on the following reading passage.

In the 1970s, two debates engaged many scholars of early United States history. One focused on the status of women, primarily White women. Turning on the so-called golden age theory, which posited that during the eighteenth-century colonial era, American women enjoyed a brief period of high status relative to their English contemporaries and to nineteenth-century American women, this debate pitted scholars who believed women's lives deteriorated after 1800 against those who thought women's lives had been no better before 1800. At issue were the causes of women's subordination: were these causes already in place when the English first settled North America or did they emerge with the rise of nineteenth-century industrial capitalism? The second debate, the so-called origins debate, concerned the emergence of racial slavery in the southern colonies: was slavery the inevitable result of the deep-rooted racial prejudice of early British colonists or did racial prejudice arise only after these planters instituted slave labor?

Although these debates are parallel in some respects, key differences distinguished them. Whereas the debate over women's status revolved around implicit comparisons of colonial women to their counterparts in the antebellum period (1800-1860), thus inviting comment from scholars of both historical periods, the origins debate was primarily confined to a discussion about slavery in colonial America. Second, in contrast to the newness of the debate over women's status and its continued currency throughout the early 1980s, the debate over race and slavery, begun in the 1950s, had lost some of its urgency with the publication of Morgan's American Slavery, American Freedom (1975), widely regarded as the last word on the subject.

GO ON TO THE NEXT PAGE.

Each debate also assumed a different relationship to the groups
30 whose histories it concerned. In its heyday, the origins debate
focused mainly on White attitudes toward Africans rather than on
Africans themselves. With few exceptions, such as Wood's Black
Majority (1974) and Mullin's Flight and Rebellion (1972), which
were centrally concerned with enslaved African men, most works
35 pertaining to the origins debate focused on the White architects,
mostly male, of racial slavery. In contrast, although women's
historians were interested in the institutions and ideologies
contributing to women's subordination, they were equally
concerned with documenting women's experiences. As in the
40 origins debate, however, early scholarship on colonial women
defined its historical constituency narrowly, women's historians
focusing mainly on affluent White women.

Over time, however, some initial differences between the
approaches taken by scholars in the two fields faded. In the 1980s,
45 historians of race and slavery in colonial America shifted their
attention to enslaved people; interest in African American culture
grew, thereby bringing enslaved women more prominently into
view. Historians of early American women moved in similar
directions during the decade and began to consider the effect of
50 racial difference on women's experience.

GO ON TO THE NEXT PAGE.

8. Select and indicate the best answer from among the five answer choices:

The passage is primarily concerned with

- (A) showing how historians who were engaged in a particular debate influenced historians engaged in another debate
- (B) explaining why two initially parallel scholarly debates diverged in the 1980s
- (C) comparing two scholarly debates and discussing their histories
- (D) contrasting the narrow focus of one scholarly debate with the somewhat broader focus of another
- (E) evaluating the relative merits of the approaches used by historians engaged in two overlapping scholarly debates

GO ON TO THE NEXT PAGE.

9. Select and indicate the best answer from among the five answer choices:

It can be inferred that the author of the passage mentions American Slavery, American Freedom in the second paragraph (line 27) primarily in order to

- (A) substantiate a point about the methodology that came to be prevalent among scholars engaged in the origins debate
- (B) cite a major influence on those scholars who claimed that racial prejudice preceded the institution of slavery in colonial America
- (C) show that some scholars who were engaged in the origins debate prior to the 1980s were interested in the experiences of enslaved people
- (D) identify a reason for a certain difference in the late 1970s between the origins debate and the debate over American women's status
- (E) contrast the kind of work produced by scholars engaged in the origins debate with the kind produced by scholars engaged in the debate over American women's status

GO ON TO THE NEXT PAGE.

10. Select and indicate the best answer from among the five answer choices:

The passage suggests which of the following about the women's historians mentioned in the third paragraph?

- (A) They disputed certain claims regarding the status of eighteenth-century American women relative to women in England during the same period.
- (B) Their approach to the study of women's subordination had been partly influenced by earlier studies published by some scholars engaged in the origins debate.
- (C) Their work focused on the experiences of both White and African American women.
- (D) Their approach resembled the approach taken in studies by Wood and by Mullin in that they were interested in the experiences of people subjected to a system of subordination.
- (E) To some extent, they concurred with Wood and with Mullin about the origins of racism in colonial America.

GO ON TO THE NEXT PAGE.

11. Select and indicate the best answer from among the five answer choices:

According to the passage, historical studies of race and slavery in early America that were produced during the 1980s differed from studies of that subject produced prior to the 1980s in that the studies produced during the 1980s

- (A) gave more attention to the experiences of enslaved women
- (B) gave less attention to the cultures of enslaved people
- (C) were read by more scholars in other fields
- (D) were more concerned with the institutions and ideologies that perpetuated racial prejudice in postcolonial America
- (E) made direct comparisons between the subordination of White women and the subordination of African American people

GO ON TO THE NEXT PAGE.

Directions for questions 12 through 17:

Each of the following questions includes a short text with two or three blanks, each blank indicating that something has been omitted. Select one entry for each blank from the corresponding column of choices. Fill all blanks in the way that best completes the text.

12. The narratives that vanquished peoples have created of their defeat have, according to Schivelbusch, fallen into several identifiable types. In one of these, the vanquished manage to (i) _____ the victor's triumph as the result of some spurious advantage, the victors being truly inferior where it counts. Often the winners (ii) _____ this interpretation, worrying about the cultural or moral costs of their triumph and so giving some credence to the losers' story.

Blank (i)	Blank (ii)
<input type="radio"/> A construe	<input type="radio"/> D take issue with
<input type="radio"/> B anoint	<input type="radio"/> E disregard
<input type="radio"/> C acknowledge	<input type="radio"/> F collude in

GO ON TO THE NEXT PAGE.

13. I've long anticipated this retrospective of the artist's work, hoping that it would make (i) _____ judgments about him possible, but greater familiarity with his paintings highlights their inherent (ii) _____ and actually makes one's assessment (iii) _____.

Blank (i)	Blank (ii)	Blank (iii)
(A) modish	(D) gloom	(G) similarly equivocal
(B) settled	(E) ambiguity	(H) less sanguine
(C) detached	(F) delicacy	(I) more cynical

14. Stories are a haunted genre; hardly (i) _____ kind of story, the ghost story is almost the paradigm of the form, and (ii) _____ was undoubtedly one effect that Poe had in mind when he wrote about how stories work.

Blank (i)	Blank (ii)
(A) a debased	(D) pessimism
(B) a normative	(E) goosebumps
(C) a meticulous	(F) curiosity

GO ON TO THE NEXT PAGE.

15. Given how (i)_____ the shortcomings of the standard economic model are in its portrayal of human behavior, the failure of many economists to respond to them is astonishing. They continue to fill the journals with yet more proofs of yet more (ii)_____ theorems. Others, by contrast, accept the criticisms as a challenge, seeking to expand the basic model to embrace a wider range of things people do.

Blank (i)	Blank (ii)
(A) overlooked	(D) comprehensive
(B) occasional	(E) improbable
(C) patent	(F) pervasive

16. The playwright's approach is (i)_____ in that her works (ii)_____ the theatrical devices normally used to create drama on the stage.

Blank (i)	Blank (ii)
(A) pedestrian	(D) jettison
(B) startling	(E) experiment with
(C) celebrated	(F) distill

GO ON TO THE NEXT PAGE.

17. Scientists are not the only persons who examine the world about them by the use of rational processes, although they sometimes (i) _____ this impression by extending the definition of “scientist” to include anyone who is (ii) _____ in his or her investigational practices.

Blank (i)

Blank (ii)

<input type="radio"/> A conceal	<input type="radio"/> D intuitive
<input type="radio"/> B create	<input type="radio"/> E haphazard
<input type="radio"/> C undermine	<input type="radio"/> F logical

GO ON TO THE NEXT PAGE.

Questions 18 and 19 are based on the following reading passage.
(A part of one sentence is shown underlined and in boldface for reference in answering question 18, and a word is shown underlined and in boldface for reference in answering question 19.)

The most plausible justification for higher taxes on automobile fuel is that fuel consumption harms the environment and thus adds to the costs of traffic congestion. But the fact that burning fuel
Line creates these “negative externalities” does not imply that no tax on
5 fuel could ever be too high. Economics is precise about the tax that should, in principle, be levied to deal with negative externalities:
the tax on a liter of fuel should be equal to the harm caused by using a liter of fuel. If the tax is more than that, its costs (including the inconvenience to those who would rather have used their cars)
10 will **exceed** its benefits (including any reduction in congestion and pollution).

GO ON TO THE NEXT PAGE.

18. Select and indicate the best answer from among the five answer choices:

Which of the following best characterizes the function of the underlined and boldfaced partial sentence in lines 7-8 of the passage?

- (A) It restates a point made earlier in the passage.
 - (B) It provides the evidence on which a theory is based.
 - (C) It presents a specific application of a general principle.
 - (D) It summarizes a justification with which the author disagrees.
 - (E) It suggests that the benefits of a particular strategy have been overestimated.
19. Select and indicate the best answer from among the five answer choices:

The word “exceed” appears underlined and boldfaced in line 10 of the passage. In the context in which it appears, “exceed” most nearly means

- (A) outstrip
- (B) magnify
- (C) delimit
- (D) offset
- (E) supplant

GO ON TO THE NEXT PAGE.

Questions 20 and 21 are based on the following reading passage.
(A two-word phrase is shown underlined and in boldface for reference in answering question 21.)

Objectively, of course, the various ecosystems that sustain life on the planet proceed independently of human agency, just as they operated before the hectic ascendancy of Homo sapiens. But it is
Line also true that it is difficult to think of a single such system that has
5 not, for better or worse, been substantially modified by human culture. Nor is this simply the work of the industrial centuries. It has been happening since the days of ancient Mesopotamia. It is **coeval**
with the origins of writing, and has occurred throughout our social
10 existence. And it is this irreversibly modified world, from the polar caps to the equatorial forests, that is all the nature we have.

20. Consider **each** of the three choices separately and select **all** that apply.

It can be inferred from the passage that the author would agree with which of the following statements?

- A Over time, the impact of human culture on the natural world has been largely benign.
- B It is a mistake to think that the natural world contains many areas of pristine wilderness.
- C The only substantial effects that human agency has had on ecosystems have been inadvertent.

GO ON TO THE NEXT PAGE.

21. Select and indicate the best answer from among the five answer choices:

The phrase “**coeval with**” appears underlined and in boldface in lines 7-8 of the passage. In the context in which it appears, “coeval with” most nearly means

- (A) influenced by
- (B) older than
- (C) coincident with
- (D) unimpeded by
- (E) similar to

GO ON TO THE NEXT PAGE.

Directions for questions 22 through 25:

Each of the following questions includes a sentence with a blank indicating that something has been omitted. Following the sentence will be a list of six words or phrases, each of which could be used to complete the sentence. Select the two answer choices that, when substituted for the blank, fit the context and produce the two sentences most nearly alike in meaning.

22. Dreams are _____ in and of themselves, but, when combined with other data, they can tell us much about the dreamer.

- A astonishing
- B disordered
- C harmless
- D inscrutable
- E revealing
- F uninformative

GO ON TO THE NEXT PAGE.

23. Linguistic science confirms what experienced users of ASL—American Sign Language—have always implicitly known: ASL is a grammatically _____ language, as capable of expressing a full range of syntactic relations as any natural spoken language.

- A complete
- B economical
- C redundant
- D spare
- E unique
- F unlimited

24. The macromolecule RNA is common to all living beings, and DNA, which is found in all organisms except some bacteria, is almost as _____.

- A comprehensive
- B fundamental
- C inclusive
- D universal
- E significant
- F ubiquitous

GO ON TO THE NEXT PAGE.

25. Early critics of Emily Dickinson's poetry mistook for simplemindedness the surface of artlessness that in fact she constructed with such _____.

A astonishment

B craft

C cunning

D innocence

E naïveté

F vexation

STOP

In an actual test, once you complete a section you may not return to it. The answer key for this section is in the separate book titled "Practice General Test # 1: Answer Key for Sections 1-4."

Section 2 starts on page 44.

Section 2
Verbal Reasoning
25 Questions

Directions for questions 1 through 5:

Each of the following questions includes a sentence with a blank indicating that something has been omitted. Following the sentence will be a list of six words or phrases, each of which could be used to complete the sentence. Select the two answer choices that, when substituted for the blank, fit the context and produce the two sentences most nearly alike in meaning.

1. In the long run, high-technology communications cannot _____ more traditional face-to-face family togetherness, in Ms. Aspinall's view.

- A ameliorate
- B compromise
- C supersede
- D approximate
- E enervate
- F supplant

GO ON TO THE NEXT PAGE.

2. Even in this business, where _____ is part of everyday life, a talent for lying is not something usually found on one's resume.

- A aspiration
- B mendacity
- C prevarication
- D insensitivity
- E baseness
- F avarice

3. A restaurant's menu is generally reflected in its decor; however, despite this restaurant's _____ appearance it is pedestrian in the menu it offers.

- A elegant
- B tawdry
- C modern
- D traditional
- E conventional
- F chic

GO ON TO THE NEXT PAGE.

4. International financial issues are typically _____ by the United States media because they are too technical to make snappy headlines and too inaccessible to people who lack a background in economics.

- A neglected
- B slighted
- C overrated
- D hidden
- E criticized
- F repudiated

GO ON TO THE NEXT PAGE.

5. While in many ways their personalities could not have been more different—she was ebullient where he was glum, relaxed where he was awkward, garrulous where he was _____— they were surprisingly well suited.

- A solicitous
- B munificent
- C irresolute
- D laconic
- E fastidious
- F taciturn

GO ON TO THE NEXT PAGE.

Questions 6 through 8 are based on the following reading passage.

Music critics have consistently defined James P. Johnson as a great early jazz pianist, originator of the 1920s Harlem “stride” style, and an important blues and jazz composer. In addition, *Line* however, Johnson was an innovator in classical music, composing
5 symphonic music that incorporated American, and especially African American, traditions.

Such a blend of musical elements was not entirely new: by 1924 both Milhaud and Gershwin had composed classical works that incorporated elements of jazz. Johnson, a serious musician
10 more experienced than most classical composers with jazz, blues, spirituals, and popular music, was particularly suited to expand Milhaud’s and Gershwin’s experiments. In 1927 he completed his first large-scale work, the blues- and jazz-inspired Yamekraw, which included borrowings from spirituals and Johnson’s own
15 popular songs. Yamekraw, premiered successfully in Carnegie Hall, was a major achievement for Johnson, becoming his most frequently performed extended work. It demonstrated vividly the possibility of assimilating contemporary popular music into the symphonic tradition.

6. Select and indicate the best answer from among the five answer choices:

The passage states that Johnson composed all of the following EXCEPT

- (A) jazz works
- (B) popular songs
- (C) symphonic music
- (D) spirituals
- (E) blues pieces

GO ON TO THE NEXT PAGE.

7. Consider **each** of the three choices separately and select **all** that apply.

The author suggests which of the following about most classical composers of the early 1920s?

- A They were strongly influenced by the musical experiments of Milhaud and Gershwin.
 - B They had little working familiarity with such forms of American music as jazz, blues, and popular songs.
 - C They made few attempts to introduce innovations into the classical symphonic tradition.
8. Select and indicate the best answer from among the five answer choices:

The author suggests that most critics have

- A underrated the popularity of Yamekraw
- B undervalued Johnson's musical abilities
- C had little interest in Johnson's influence on jazz
- D had little regard for classical works that incorporate popular music
- E neglected Johnson's contribution to classical symphonic music

GO ON TO THE NEXT PAGE.

Questions 9 and 10 are based on the following reading passage.
(A word is boldfaced and underlined for reference in answering question 10.)

Scholarship on political newspapers and their editors is dominated by the view that as the United States grew, the increasing influence of the press led, ultimately, to the neutral reporting from which we benefit today. Pasley considers this view oversimplified, *Line* 5 because neutrality was not a goal of early national newspaper editing, even when editors **disingenuously** stated that they aimed to tell all sides of a story. Rather, the intensely partisan ideologies represented in newspapers of the early republic led to a clear demarcation between traditional and republican values. The editors *10* responsible for the papers' content—especially those with republican agendas—began to see themselves as central figures in the development of political consciousness in the United States.

9. Consider **each** of the three choices separately and select **all** that apply.

The passage suggests that Pasley would agree with which of the following statements about the political role of newspapers?

- A Newspapers today are in many cases much less neutral in their political reporting than is commonly held by scholars.
- B Newspapers in the early United States normally declared quite openly their refusal to tell all sides of most political stories.
- C The editorial policies of some early United States newspapers became a counterweight to proponents of traditional values.

GO ON TO THE NEXT PAGE.

10. Select and indicate the best answer from among the five answer choices:

The word “disingenuously” appears underlined and in boldface in line 6 of the passage. In the context in which it appears, “disingenuously” most nearly means

- (A) insincerely
- (B) guilelessly
- (C) obliquely
- (D) resolutely
- (E) pertinaciously

GO ON TO THE NEXT PAGE.

Directions for questions 11 and 12:

Each of the following questions includes a short text with two or three blanks, each blank indicating that something has been omitted. Select one entry for each blank from the corresponding column of choices. Fill all blanks in the way that best completes the text.

11. The (i)_____ nature of classical tragedy in Athens belies the modern image of tragedy: in the modern view tragedy is austere and stripped down, its representations of ideological and emotional conflicts so superbly compressed that there's nothing (ii)_____ for time to erode.

Blank (i)	Blank (ii)
<input type="radio"/> A unadorned	<input type="radio"/> D inalienable
<input type="radio"/> B harmonious	<input type="radio"/> E exigent
<input type="radio"/> C multifaceted	<input type="radio"/> F extraneous

GO ON TO THE NEXT PAGE.

12. Murray, whose show of recent paintings and drawings is her best in many years, has been eminent hereabouts for a quarter century, although often regarded with (i) _____, but the most (ii) _____ of these paintings (iii) _____ all doubts.

Blank (i)	Blank (ii)	Blank (iii)
(A) partiality	(D) problematic	(G) exculpate
(B) credulity	(E) successful	(H) assuage
(C) ambivalence	(F) disparaged	(I) whet

GO ON TO THE NEXT PAGE.

Directions for questions 13 and 14:

Each of the following questions includes a short text with a blank, indicating that something has been omitted. Select the entry that best completes the text.

13. Far from viewing Jefferson as a skeptical but enlightened intellectual, historians of the 1960s portrayed him as _____ thinker, eager to fill the young with his political orthodoxy while censoring ideas he did not like.
- (A) an adventurous
 - (B) a doctrinaire
 - (C) an eclectic
 - (D) a judicious
 - (E) a cynical

GO ON TO THE NEXT PAGE.

14. Dramatic literature often _____ the history of a culture in that it takes as its subject matter the important events that have shaped and guided the culture.

- Ⓐ confounds
- Ⓑ repudiates
- Ⓒ recapitulates
- Ⓓ anticipates
- Ⓔ polarizes

GO ON TO THE NEXT PAGE.

Questions 15 through 17 are based on the following reading passage.
(A sentence is boldfaced and underlined for reference in answering question 16.)

In Raisin in the Sun, Lorraine Hansberry does not reject integration or the economic and moral promise of the American dream; rather, she remains loyal to this dream while looking, realistically, at its incomplete realization. Once we recognize this dual vision, we can accept the play's ironic nuances as deliberate social commentaries by Hansberry rather than as the "unintentional" irony that Bigsby attributes to the work. **Indeed, a curiously persistent refusal to credit Hansberry with a capacity for intentional irony has led some critics to interpret the play's thematic conflicts as mere confusion, contradiction, or eclecticism.** Isaacs, for example, cannot easily reconcile Hansberry's intense concern for her race with her ideal of human reconciliation. But the play's complex view of Black self-esteem and human solidarity as compatible is no more "contradictory" than Du Bois's famous, well-considered ideal of ethnic self-awareness coexisting with human unity, or Fanon's emphasis on an ideal internationalism that also accommodates national identities and roles.

GO ON TO THE NEXT PAGE.

15. Select and indicate the best answer from among the five answer choices:

The author's primary purpose in the passage is to

- (A) explain some critics' refusal to consider Raisin in the Sun a deliberately ironic play
 - (B) suggest that ironic nuances ally Raisin in the Sun with Du Bois's and Fanon's writings
 - (C) analyze the fundamental dramatic conflicts in Raisin in the Sun
 - (D) emphasize the inclusion of contradictory elements in Raisin in the Sun
 - (E) affirm the thematic coherence underlying Raisin in the Sun
16. Select and indicate the best answer from among the five answer choices:

The author of the passage would probably consider which of the following judgments to be most similar to the reasoning of the critics described in the underlined and boldfaced sentence (lines 7-11) ?

- (A) The world is certainly flat; therefore, the person proposing to sail around it is unquestionably foolhardy.
- (B) Radioactivity cannot be directly perceived; therefore, a scientist could not possibly control it in a laboratory.
- (C) The painter of this picture could not intend it to be funny; therefore, its humor must result from a lack of skill.
- (D) Traditional social mores are beneficial to culture; therefore, anyone who deviates from them acts destructively.
- (E) Filmmakers who produce documentaries deal exclusively with facts; therefore, a filmmaker who reinterprets particular events is misleading us.

GO ON TO THE NEXT PAGE.

17. The five sentences in the passage are repeated below, in their original order, with each one assigned a letter. Select and indicate a sentence in the passage in which the author provides examples that reinforce an argument against a critical response cited earlier in the passage.
- (A) In Raisin in the Sun, Lorraine Hansberry does not reject integration or the economic and moral promise of the American dream; rather, she remains loyal to this dream while looking, realistically, at its incomplete realization.
 - (B) Once we recognize this dual vision, we can accept the play's ironic nuances as deliberate social commentaries by Hansberry rather than as the "unintentional" irony that Bigsby attributes to the work.
 - (C) Indeed, a curiously persistent refusal to credit Hansberry with a capacity for intentional irony has led some critics to interpret the play's thematic conflicts as mere confusion, contradiction, or eclecticism.
 - (D) Isaacs, for example, cannot easily reconcile Hansberry's intense concern for her race with her ideal of human reconciliation.
 - (E) But the play's complex view of Black self-esteem and human solidarity as compatible is no more "contradictory" than Du Bois's famous, well-considered ideal of ethnic self-awareness coexisting with human unity, or Fanon's emphasis on an ideal internationalism that also accommodates national identities and roles.

GO ON TO THE NEXT PAGE.

Question 18 is based on the following text.

As an example of the devastation wrought on music publishers by the photocopier, one executive noted that for a recent choral festival with 1,200 singers, the festival's organizing committee purchased
Line only 12 copies of the music published by her company that was
5 performed as part of the festival.

18. Select and indicate the best answer from among the five answer choices:

Which of the following, if true, most seriously weakens the support the example lends to the executive's contention that music publishers have been devastated by the photocopier?

- (A) Only a third of the 1,200 singers were involved in performing the music published by the executive's company.
- (B) Half of the singers at the festival had already heard the music they were to perform before they began to practice for the festival.
- (C) Because of shortages in funding, the organizing committee of the choral festival required singers to purchase their own copies of the music performed at the festival.
- (D) Each copy of music that was performed at the festival was shared by two singers.
- (E) As a result of publicity generated by its performance at the festival, the type of music performed at the festival became more widely known.

GO ON TO THE NEXT PAGE.

Directions for questions 19 through 21:

Each of the following questions includes a short text with two or three blanks, each blank indicating that something has been omitted. Select one entry for each blank from the corresponding column of choices. Fill all blanks in the way that best completes the text.

19. New technologies often begin by (i)_____ what has gone before, and they change the world later. Think how long it took power-using companies to recognize that with electricity they did not need to cluster their machinery around the power source, as in the days of steam. Instead, power could be (ii)_____ their processes. In that sense, many of today's computer networks are still in the steam age. Their full potential remains unrealized.

Blank (i)	Blank (ii)
(A) uprooting	(D) transmitted to
(B) dismissing	(E) consolidated around
(C) mimicking	(F) incorporated into

GO ON TO THE NEXT PAGE.

20. There has been much hand-wringing about how unprepared American students are for college. Graff reverses this perspective, suggesting that colleges are unprepared for students. In his analysis, the university culture is largely (i)_____ entering students because academic culture fails to make connections to the kinds of arguments and cultural references that students grasp. Understandably, many students view academic life as (ii)_____ ritual.

Blank (i)

Blank (ii)

(A) primed for	(D) an arcane
(B) opaque to	(E) a laudable
(C) essential for	(F) a painstaking

GO ON TO THE NEXT PAGE.

21. Of course anyone who has ever perused an unmodernized text of Captain Clark's journals knows that the Captain was one of the most (i)_____ spellers ever to write in English, but despite this (ii)_____ orthographical rules, Clark is never unclear.

Blank (i)

Blank (ii)

<input type="radio"/> A indefatigable	<input type="radio"/> D disregard for
<input type="radio"/> B fastidious	<input type="radio"/> E partiality toward
<input type="radio"/> C defiant	<input type="radio"/> F unpretentiousness about

GO ON TO THE NEXT PAGE.

Question 22 is based on the following reading passage.

For the past two years at FasCorp, there has been a policy to advertise any job opening to current employees and to give no job to an applicant from outside the company if a FasCorp employee
Line applies who is qualified for the job. This policy has been strictly
5 followed, yet even though numerous employees of FasCorp have been qualified for any given entry-level position, some entry-level jobs have been filled with people from outside the company.

22. Select and indicate the best answer from among the five answer choices:

If the information provided is true, which of the following must on the basis of it also be true about FasCorp during the past two years?

- (A) There have been some open jobs for which no qualified FasCorp employee applied.
- (B) Some entry-level job openings have not been advertised to FasCorp employees.
- (C) The total number of employees has increased.
- (D) FasCorp has hired some people for jobs for which they were not qualified.
- (E) All the job openings have been for entry-level jobs.

GO ON TO THE NEXT PAGE.

Questions 23 through 25 are based on the following reading passage.

A tall tree can transport a hundred gallons of water a day from its roots deep underground to the treetop. Is this movement propelled by pulling the water from above or pushing it from below? The pull
Line mechanism has long been favored by most scientists. First proposed
5 in the late 1800s, the theory relies on a property of water not commonly associated with fluids: its tensile strength. Instead of making a clean break, water evaporating from treetops tugs on the remaining water molecules, with that tug extending from molecule to molecule all the way down to the roots. The tree itself does not
10 actually push or pull; all the energy for lifting water comes from the sun's evaporative power.

23. Select and indicate the best answer from among the five answer choices:

The passage is primarily concerned with

- (A) refuting a hypothesis advanced by scientists
- (B) discussing the importance of a phenomenon
- (C) presenting a possible explanation of a phenomenon
- (D) contrasting two schools of thought
- (E) discussing the origins of a theory

GO ON TO THE NEXT PAGE.

24. Consider **each** of the three choices separately and select **all** that apply.

Which of the following statements is supported by the passage?

- A The pull theory is not universally accepted by scientists.
 - B The pull theory depends on one of water's physical properties.
 - C The pull theory originated earlier than did the push theory.
25. Select and indicate the best answer from among the five answer choices:

The passage provides information on each of the following EXCEPT

- A when the pull theory originated
- B the amount of water a tall tree can transport
- C the significance of water's tensile strength in the pull theory
- D the role of the sun in the pull theory
- E the mechanism underlying water's tensile strength

STOP

In an actual test, once you complete a section you may not return to it. The answer key for this section is in the separate book titled "Practice General Test # 1: Answer Key for Sections 1-4."

NO TEST MATERIAL ON THIS PAGE

NO TEST MATERIAL ON THIS PAGE

