



PERMANENT CAMPUS OF IIT PATNA AT BIHTA PATNA

BRIEF DETAIL AND STATUS



INDIAN INSTITUTE OF TECHNOLOGY PATNA

Brief of Permanent campus at Bihta

- Location: Situated at N25°32' 0.18" (Latitude) E 084°51' 16.08" (Longitude) at Globe i.e. at Bihta (Satelite Town of Patna) , 35 KM west of Patna.
- Nearest Railway station Bihta 3KM.
- Nearest airport is at Patna (35 KM).
- Climate: Humid subtropical.
- Total Area of Plot: 500 Acres.



INDIAN INSTITUTE OF TECHNOLOGY PATNA

STATUS REPORT AS ON 02/07/2015

- **Academic Complex:**
- **Area of construction: 53611.44 SQM**
- Name of Buildings: Tutorial Building, Block-4, Block 6, Block 3, workshops A, B, C, Food court, Administrative Buildings.
- **Residential Complex:**
- **Area of construction: 63204 SQM**
- Name of Buildings: Boys Hostel (930 Rooms) with dinning, common room etc., Girls Hostel and Guest House in B type Quarters, B type Quarters (108 Nos), D type Quarters (64 Nos), Hospital, School, Directors residence, MRSS and Substations
- Others: Metal Road, WTP, STP, 33 KV dedicated electrical line.
- Shifting process in main campus started, new session of 2015-16 shall start from main campus at Bihta, Patna.



MASTER PLAN





Academic Block No- 04
Science Block (Physics & Chemistry)
(G+3, Built up Area: 6668 SQM)

FRONT VIEW





Academic Block No- 04
Science Block (Physics & Chemistry)
(G+3, Built up Area: 6668 SQM)

Main Entry





Academic Block No- 04 Science Block (Physics & Chemistry) (G+3, Built up Area: 6668 SQM)

Internal Room with light Fittings
FF



False Ceiling with Light
Fittings FF





Academic Block No- 04
Science Block (Physics & Chemistry)
(G+3, Built up Area: 6668 SQM)

ELECTRICAL PANNEL



CORRIDOR PORTION





Academic Block No- 04 Science Block (Physics & Chemistry) (G+3, Built up Area: 6668 SQM)

HVAC OUT DOOR UNIT AT ROOF





Academic Block No- 06

Dept of Civil & Environmental , Material Science, Chemical & Biochemical
(G+5, Built up Area: 9886 SQM)

BACK VIEW





Academic Block No- 03

Dept. of Mechanical & Electrical Engg.

(G+5, Built up Area: 9886 SQM)

SIDE VIEW





Academic Block No- 03

Dept. of Mechanical & Electrical Engg.

(G+5, Built up Area: 9886 SQM)

BACK VIEW





Academic Block No- 09, Tutorial Block (G+5, Built up Area: 11319 SQM)

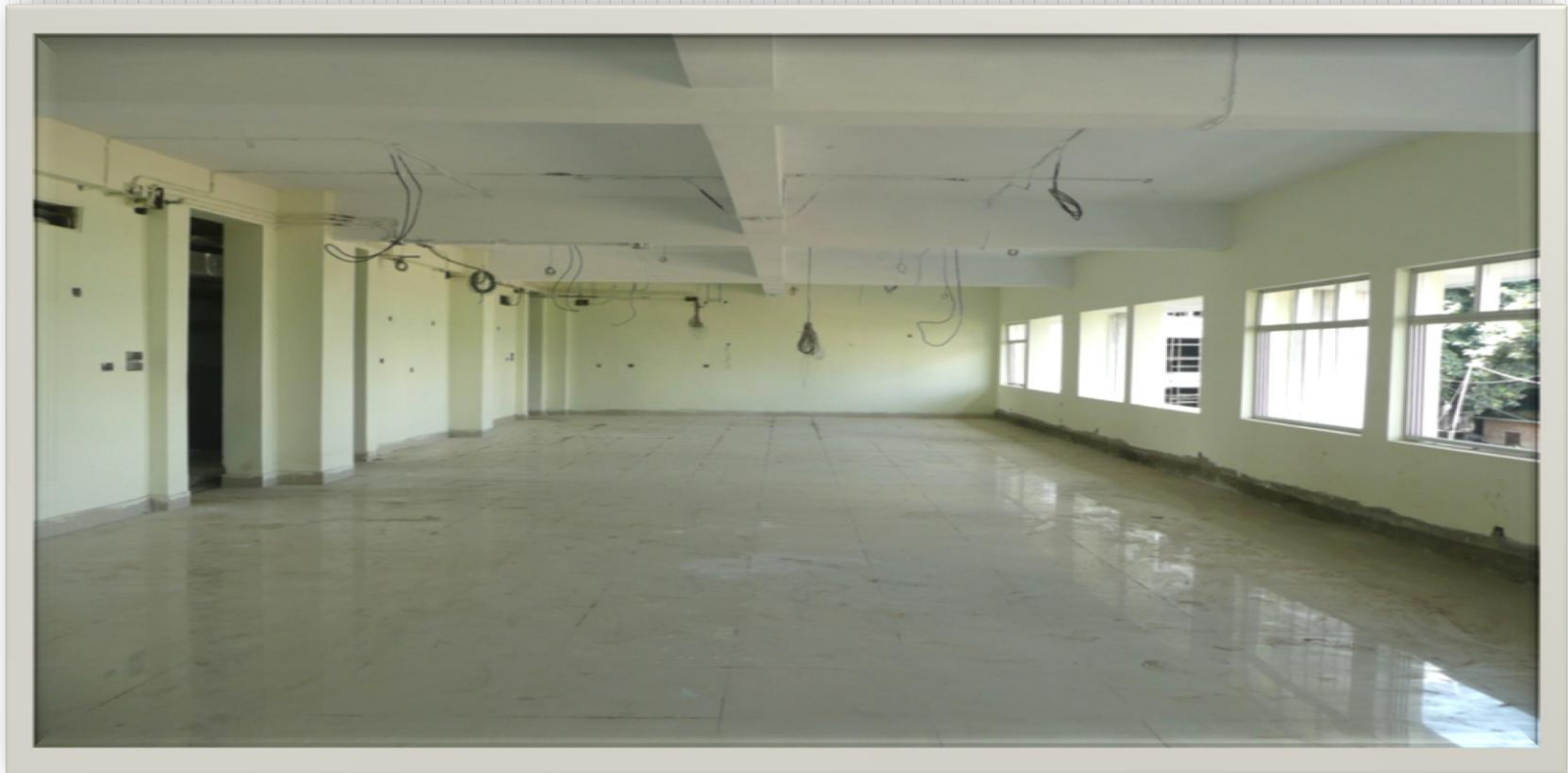
FRONT VIEW





Academic Block No- 09, Tutorial Block (G+5, Built up Area: 11319 SQM)

INTERNAL FINISHING





ADMINISTRATIVE BUILDING

(G+3, Built up Area: 10655 Sqm)

Front View





Work Shop –A, B,C

(Built up Area: 1017 Sqm, 826 Sqm, 634Sqm)





ROAD WITH STREET LIGHT POST AT ROUNDBABOUT PORTION IN FRONT OF ADMINISTRATIVE BUILDING





Sewage Treatment Plant & Water Treatment Plant

STP-1



WTP





D-Type of staff quarter's (G+3) (Built up Area: 4608 Sqm, 64 units of 2 BHK)



D1 BLOCK



D2 BLOCK



D-Type of staff quarter's (G+3) (Built up Area: 4608 Sqm,64 units of 2 BHK)



D3 BLOCK



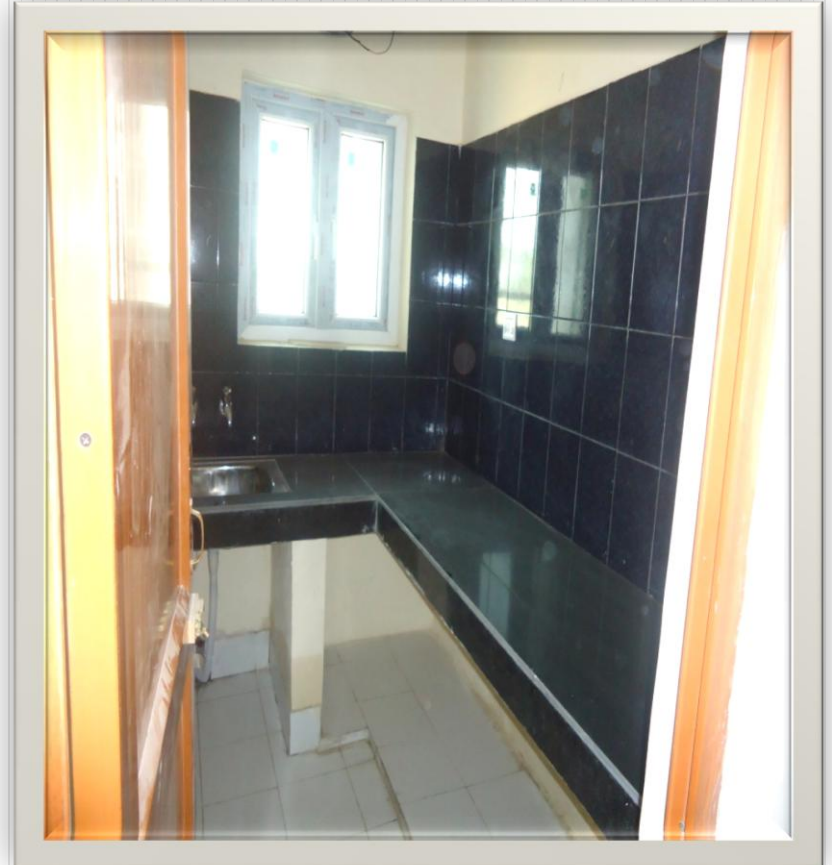
D4 BLOCK



D-Type of staff quarter's (G+3) (Built up Area: 4608 Sqm,64 units of 2 BHK)



INTERNAL FINISHING



KITCHEN



D-Type of staff quarter's (G+3) (Built up Area: 4608 Sqm,64 units of 2 BHK)

INTERNAL FINISHING



INTERNAL FINISHING



Toilet



B-Type staff quarter's (G+8)

(Built up Area: 23076 Sqm, 144 units, 3BHK)





B-Type staff quarter's (G+8)

(Built up Area: 23076 Sqm, 144 units, 3BHK)



B1 BLOCK



B2 BLOCK



B-Type of staff quarter's (G+8)

(Built up Area: 23076 Sqm, 144 units, 3BHKK)



B3 BLOCK



B4 BLOCK



**B-Type of staff quarter's (G+8)
(Built up Area: 23076 Sqm, 144 units, 3BHKK)
Sample Flat**



INSIDE VIEW



INSIDE VIEW



BOYS HOSTEL,(G+7)
912 Single seated Rooms
with Kitchen, Dinning and Common Room
(Built up Area: 28849 Sqm)

FRONT VIEW





BOYS HOSTEL,(G+7)
912 Single seated Rooms
with Kitchen, Dinning and Common Room
(Built up Area: 28849 Sqm)

Sample Room
INTERNAL VIEWS





BOYS HOSTEL,(G+7)

912 Single seated Rooms
with Kitchen, Dinning and Common Room
(Built up Area: 28849 Sqm)

INTERNAL VIEWS

Common room



corridor



BOYS HOSTEL,(G+7)
912 Single seated Rooms
with Kitchen, Dinning and Common Room
(Built up Area: 28849 Sqm)



INTERNAL VIEWS

Wash basin Urinals



Bath room





Director's Bungalow (Built up Area: 625 Sqm)

Front View





HOSPITAL(PART)

(Built up Area: 2459 Sqm Sqm, G+1)

Side View





HOSPITAL(PART)

(Built up Area: 2459 Sqm Sqm, G+1)

Front View





MAIN RECEIVING SUB-STATION 33 KV

FRONT VIEW



SWITCH YARD





SUB-STATION

11 KV

SIDE VIEW



FRONT VIEW

