



J A G R A N
Josh
your guide to success

WWW.JAGRANJOSH.COM

SSC HIGHER SECONDARY DATA ENTRY OPERATOR
& LDC EXAM SOLVED QUESTION PAPER 2011

Test Form No.
टेस्ट फॉर्म सं.
012 NL 5

BW 2011

BM

Time Allowed : 2 Hours (For V.H. Candidates : 2 hr. 20 min.)

Maximum Marks : 200

निर्धारित समय : 2 घंटे (दृष्टिबाधित उम्मीदवारों के लिए : 2 घण्टे 20 मिनट)

अधिकतम अंक : 200

Read the following instructions carefully before you begin to answer the questions.

This booklet contains questions in English as well as in Hindi.

प्रश्नों के उत्तर देने से पहले नीचे लिखे अनुदेशों को ध्यान से पढ़ लें।

इस पुस्तिका में प्रश्न अंग्रेजी तथा हिन्दी दोनों में दिये गये हैं।

INSTRUCTIONS TO CANDIDATES

- This Booklet contains 200 questions in all comprising the following four parts :
 Part - I : General Intelligence (50 Questions)
 Part - II : English Language (50 Questions)
 Part - III : Quantitative Aptitude (50 Questions)
 Part - IV : General Awareness (50 Questions)
- All questions are compulsory and carry equal marks.
- Before you start to answer the questions you must check up this Booklet and ensure that it contains all the pages (1-40) and see that no page is missing or repeated. If you find any defect in this Booklet, you must get it replaced immediately.
- The paper carries negative marking. 0.25 marks will be deducted for each wrong answer.
- You will be supplied the Answer-Sheet separately by the Invigilator. You must complete the details of Name, Roll Number, Ticket Number and Test Form Number on Side-I of the Answer-Sheet carefully. You must also put your signature and Left Hand thumb impression on the Answer-Sheet at the prescribed place before you actually start answering the questions. These instructions must be fully complied with, failing which, your Answer-Sheet will not be evaluated and you will be awarded 'ZERO' mark. (For V.H. candidates these details will be filled in by the scribe. However all V.H. candidates must put their left-hand thumb impression at the space provided in the Answer-Sheet. In addition, those V.H. candidates who can sign should also put their signatures in addition to thumb impression.)
- Answers must be shown by completely blackening the corresponding rectangles on Side-II of the Answer-Sheet against the relevant question number by Black Ball-point Pen only.
- A machine will read the coded information in the OMR Answer-Sheet. In case the information is incomplete/different from the information given in the application form, the candidature of such candidate will be treated as cancelled.
- The Answer-Sheet must be handed over to the Invigilator before you leave the Examination Hall.
- Failure to comply with any of the above instructions will render a candidate liable to such action/penalty as may be deemed fit.
- The manner in which the different questions are to be answered has been explained at the back of this Booklet (Page No. 40), which you should read carefully before actually answering the questions.
- Answer the questions as quickly and as carefully as you can. Some questions may be difficult and others easy. Do not spend too much time on any question.
- In lieu of Questions No. 45 to 50 and 142 to 150 relating to figural and graph portions, alternate questions have been provided to be attempted by V.H. candidates only.
- Mobile phones and wireless communication devices are completely banned in the examination halls/rooms. Candidates are advised not to keep mobile phones/any other wireless communication devices with them even switching it off, in their own interest. Failing to comply with this provision will be considered as using unfair means in the examination and action will be taken against them including cancellation of their candidature.
- No rough work is to be done on the Answer-Sheet. Space for rough work has been provided below the questions in Part I and Part III of this Booklet.

उम्मीदवारों के लिए अनुदेश

- इस पुस्तिका में कुल 200 प्रश्न हैं, जिनमें निम्नलिखित चार भाग शामिल हैं :
 भाग - I : सामान्य बुद्धि (50 प्रश्न)
 भाग - II : अंग्रेजी भाषा (50 प्रश्न)
 भाग - III : मात्रात्मक अभिक्रमता (50 प्रश्न)
 भाग - IV : सामान्य जानकारी (50 प्रश्न)
- सभी प्रश्न अनिवार्य हैं तथा सबके बराबर अंक हैं।
- प्रश्नों के उत्तर देने से पहले आप इस पुस्तिका की जाँच करके देख लें कि इसमें पूरे पृष्ठ (1-40) हैं तथा कोई पृष्ठ कम या दुबारा तो नहीं आ गया है। यदि आप इस पुस्तिका में कोई त्रुटि पाएँ, तो तत्काल इसके बदले दूसरी पुस्तिका ले लें।
- प्रश्न पत्र में नकारात्मक अंकन होगा। हर गलत उत्तर के लिए 0.25 अंक काटा जाएगा।
- निरीक्षक द्वारा आपको उत्तर-पत्रिका अलग से दी जाएगी। प्रश्नों के उत्तर वास्तव में शुरू करने से पहले आप उत्तर-पत्रिका के Side-I में अपना नाम, रोल नम्बर, टिकट नम्बर तथा टेस्ट फॉर्म संख्या अवश्य लिखें। उत्तर-पत्रिका पर निर्धारित स्थान में आप अपने हस्ताक्षर एवं बाएँ हाथ के अंगूठे का निशान अवश्य लगाएँ। उपर्युक्त अनुदेशों का पूरी तरह अनुपालन किया जाए, अन्यथा आपकी उत्तर-पत्रिका को जीवा नहीं जाएगा और 'शून्य' अंक दिया जाएगा। (दृष्टिबाधित उम्मीदवारों के लिए यह विवरण लिपिक द्वारा भरा जाए। परन्तु सभी दृष्टिबाधित उम्मीदवार उत्तर-पत्रिका में निर्धारित स्थान पर अपने बाएँ हाथ के अंगूठे का निशान अवश्य लगाएँ। इसके अतिरिक्त, जो दृष्टिबाधित उम्मीदवार हस्ताक्षर कर सकते हैं, वे अंगूठे के निशान के अलावा अपने हस्ताक्षर भी कर दें।)
- उत्तर-पत्रिका में सभी उत्तर Side-II में प्रश्न संख्या के सामने दिये गये सम्बन्धित आयताकार खानों को काले बॉल-पॉइंट पेन से पूरी तरह काला करके दिखाएँ।
- ओ.एम.आर. उत्तर-पत्रिका में भरी गई कूट सूचना को एक मशीन पढ़ेगी। यदि सूचना अपूर्ण है अथवा आवेदन प्रपत्र में दी गई सूचना से भिन्न है, तो ऐसे अभ्यर्थी की अभ्यर्थिता निरस्त समझी जाएगी।
- परीक्षा-भवन छोड़ने से पहले परीक्षार्थी को उत्तर-पत्रिका निरीक्षक के हवाले कर देनी चाहिए।
- ऊपर के अनुदेशों में से किसी एक का भी पालन न करने पर उम्मीदवार पर विवेकानुसार कार्यवाही की जा सकती है या दण्ड दिया जा सकता है।
- विभिन्न प्रश्नों के उत्तर देने की विधि इस पुस्तिका के पीछे (पृष्ठ संख्या 40) में छपे हुए निर्देशों में दे दी गई है, इसे आप प्रश्नों के उत्तर देने से पहले ध्यानपूर्वक पढ़ लें।
- प्रश्नों के उत्तर जितनी जल्दी हो सके तथा ध्यानपूर्वक दें। कुछ प्रश्न आसान तथा कुछ कठिन हैं। किसी एक प्रश्न पर बहुत अधिक समय न लगाएँ।
- आकृति और आलेख से सम्बन्धित प्रश्न संख्या 45 से 50 एवं 142 से 150 के बदले में केवल दृष्टिबाधित उम्मीदवारों द्वारा हल किए जाने के लिए वैकल्पिक प्रश्न दिए गए हैं।
- परीक्षा हॉल/कमरों में मोबाइल फोन तथा बेतार संचार साधन पूरी तरह निषिद्ध हैं। प्रत्याशियों को उनके अपने हित में सलाह दी जाती है कि मोबाइल फोन/किसी अन्य बेतार संचार साधन को सिव्ध ऑफ करके भी अपने पास न रखें। इस प्रावधान का अनुपालन न करने को परीक्षा में अनधिकृत उपायों का प्रयोग माना जाएगा और उनके विरुद्ध कार्यवाही की जाएगी, उनकी अभ्यर्थिता रद्द कर देने सहित।
- कोई रफ़ कार्य उत्तर-पत्रिका पर नहीं करना है। रफ़ कार्य के लिए स्थान इसी पुस्तिका के भाग I तथा भाग III के प्रश्नों के नीचे दिया गया है।

PART - I : GENERAL INTELLIGENCE

Directions : In questions no. 1 to 9, select the related word/letters/number from the given alternatives.

1. Life : Death :: Hope : ?
 (A) Weep (B) Pain
 (C) Despair (D) Sadness

2. Christian : Muslim :: ? : Quran
 (A) Geeta (B) Ramayan
 (C) Angel (D) Bible

3. Large : Enormous :: ?
 (A) Cat : Tiger
 (B) Warmth : Frost
 (C) Plump : Fat
 (D) Royal : Regale

4. BC : DI :: DE : ?
 (A) PY (B) FP
 (C) EI (D) RU

5. ACE : KIG :: MOQ : ?
 (A) WUS (B) WVU
 (C) WVT (D) WUT

6. DCEF : WXVU :: KJLM : ?
 (A) QPRS (B) STRQ
 (C) PQNO (D) NMKL

7. 3 : 27 :: 7 : ?
 (A) 21 (B) 42
 (C) 147 (D) 343

8. 9 : 28 :: 56 : ?
 (A) 3 (B) 18
 (C) 112 (D) 169

9. 12 : 35 :: 16 : ?
 (A) 78 (B) 32
 (C) 55 (D) 63

Directions : In questions no. 10 to 18, select the one which is different from the other three responses.

10. (A) River (B) Ocean
 (C) Lake (D) Rain

11. (A) King (B) Queen
 (C) Royal (D) Prince

12. (A) Mango (B) Apple
 (C) Orange (D) Guava

13. (A) M (B) N
 (C) O (D) P

14. (A) GLOV (B) CFKR
 (C) ILQX (D) ADIP

15. (A) GOD (B) RAT
 (C) WAR (D) PAPER

16. (A) 363 (B) 484
 (C) 1331 (D) 5462

17. (A) 8-64 (B) 6-36
 (C) 9-81 (D) 7-50

18. (A) 121-196 (B) 144-225
 (C) 36-83 (D) 16-49

19. Amongst the following words, which word appears second in order in the English dictionary ?
 (A) Complaint (B) Complication
 (C) Complement (D) Compose

Directions : In questions no. 20 and 21, which one of the given responses would be a meaningful order of the following words in ascending order ?

20. 1. Line 2. Angle
 3. Square 4. Triangle
 (A) 2, 1, 4, 3 (B) 3, 4, 1, 2
 (C) 4, 2, 1, 3 (D) 1, 2, 4, 3
21. 1. Childhood 2. Adulthood
 3. Infancy 4. Adolescence
 5. Babyhood
 (A) 4, 1, 3, 2, 5 (B) 3, 5, 1, 4, 2
 (C) 2, 5, 1, 4, 3 (D) 5, 4, 2, 3, 1

22. Which one set of letters when sequentially placed at the gaps in the given letter series shall complete it ?

L_NOO_ML_MNO_NML

- (A) MNLO (B) ONML
 (C) NLMO (D) LOMN

Directions : In questions no. 23 to 26, choose the correct alternative from the given ones that will complete the series.

23. AD, EH, IL, , QT
 (A) LM (B) MN
 (C) MP (D) OM
24. ABCD, IJKL, QRST, ?
 (A) YZAB (B) ABYZ
 (C) BAZY (D) YAZB
25. 2, 6, 14, 26, , 62
 (A) 52 (B) 54
 (C) 44 (D) 42
26. 6, 12, 21, 33, ?
 (A) 45 (B) 48
 (C) 40 (D) 46

27. Find the **wrong** number in the given series.

13, 24, 29, 39, 44, 54, 61, 69

- (A) 61 (B) 13
 (C) 44 (D) 24

28. P and Q are brothers. R and S are sisters. P's son is S's brother. How is Q related to R ?

- (A) Uncle (B) Brother
 (C) Father (D) Grandfather

29. There are five friends – Satish, Kishore, Mohan, Anil and Rajesh. Mohan is the tallest. Satish is shorter than Kishore but taller than Rajesh. Anil is little shorter than Kishore but little taller than Satish. Who is taller than Rajesh but shorter than Anil ?

- (A) Anil (B) Kishore
 (C) Rajesh (D) Satish

30. From the given alternatives select the word which **cannot** be formed using the letters of the given word.

COLLABORATION

- (A) ACTION (B) BILL
 (C) BORN (D) CRITERION

31. A group of alphabets are given with each being assigned a number. These have to be unscrambled into a meaningful word and correct order of letters may be indicated from the given responses.

E F N R A C

1 2 3 4 5 6

- (A) 136452 (B) 245361
 (C) 415623 (D) 645312

32. If TIMBER is written as BERMIT in a certain code, how would BANTER be written in that code ?

(A) RETNAB (B) TERNAB
(C) TENBAR (D) TABNER

33. If UNIVERSITY is 1273948756, how can TRUSTY be written in that code ?

(A) 542856 (B) 531856
(C) 541856 (D) 541956

34. Which interchange of signs will make the following equation correct ?

$$35 + 7 \times 5 \div 5 - 6 = 24$$

(A) \times and $-$ (B) $+$ and \times
(C) \div and $+$ (D) $-$ and \div

35. Select the correct combination of mathematical signs to replace * signs and to balance the given equation.

$$8 * 5 * 2 * 72 * 4$$

(A) $= \times + \div$ (B) $\times = + \div$
(C) $\times + = \div$ (D) $+ \times = \div$

36. Some equations are solved on the basis of a certain system. On the same basis, find out the correct answer for the unsolved equation.

$$3 \times 8 \times 2 = 832, \quad 6 \times 4 \times 1 = 461, \\ 8 \times 6 \times 1 = ?$$

(A) 238 (B) 816
(C) 146 (D) 681

Directions : In questions no. 37 & 38, select the missing number from the given responses.

37. $\begin{matrix} 27 & 9 & 3 \\ 4 & 16 & 64 \\ 512 & ? & 8 \end{matrix}$

(A) 64 (B) 2
(C) 16 (D) 8

38. $\begin{matrix} 5 & 3 & 7 & 1 \\ 7 & 5 & 9 & 3 \\ 4 & 4 & 4 & 4 \\ 3 & 2 & ? & 1 \end{matrix}$

(A) 6 (B) 5
(C) 4 (D) 2

39. 'A' starts walking towards North, turns left, again turns left, turns right, again turns right, once again turns left. In which direction is 'A' walking now ?

(A) East (B) South
(C) West (D) South-East

40. Ram walked 4 km West of his house and then turned to South covering 8 km. Finally he moves 6 km towards East and then again 2 km West. How far is he from his initial position ?

(A) 4 km (B) 8 km
(C) 10 km (D) 12 km

41. A, B, C, D and E are standing in a line facing North. E is standing 40 metres left to B. A is standing 20 metres left to C. D is standing 20 metres right to E and 50 metres right to C. What is the distance between A and D ?

(A) 50 metres (B) 60 metres
(C) 70 metres (D) 80 metres

42. A solid cube of 4 inches has been painted red, green and black on pairs of opposite faces. It has been cut into one inch cubes. How many cubes have only three faces painted ?

(A) 4 (B) 8
(C) 12 (D) 16

43. Two statements are given followed by two conclusions I and II. You have to consider the statements to be true even if they seem to be at variance from commonly known facts. You are to decide which of the given conclusions, if any, follow from the given statements. Indicate your answer.

Statements :

1. AIDS is a killer disease.
2. It is easy to prevent AIDS than to treat it.

Conclusions :

- I. AIDS prevention is very expensive.
- II. People will not cooperate for AIDS prevention.

(A) Only conclusion I follows
(B) Only conclusion II follows
(C) Neither conclusion I nor II follows
(D) Both conclusions I and II follow

44. Two statements are given followed by four conclusions I, II, III and IV. You have to consider the statements to be true even if they seem to be at variance from commonly known facts. You are to decide which of the given conclusions, if any, follow from the given statements. Indicate your answer.

Statements :

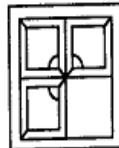
1. All pens are pencils.
2. No pencil is monkey.

Conclusions :

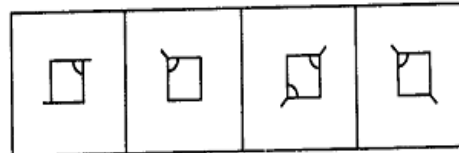
- I. No pen is monkey.
 - II. Some pens are monkeys.
 - III. All monkeys are pens.
 - IV. Some monkeys are pens.
- (A) Either conclusion II or III follows
(B) Either conclusion II or IV follows
(C) Only conclusion I follows
(D) All conclusions follow

45. Which answer figure will complete the pattern in the question figure ?

Question figure :



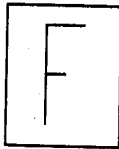
Answer figures :



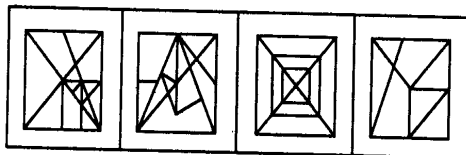
(A) (B) (C) (D)

46. Select the answer figure in which the question figure is hidden/embedded.

Question figure :



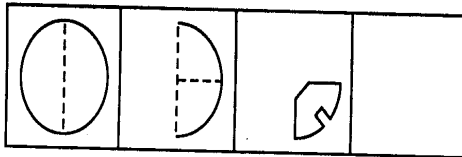
Answer figures :



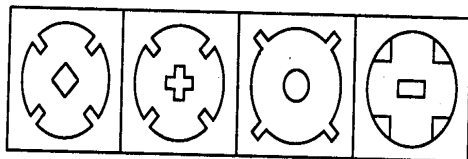
(A) (B) (C) (D)

47. A piece of paper is folded and cut as shown below in the question figures. From the given answer figures, indicate how it will appear when opened ?

Question figures :



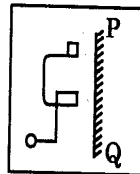
Answer figures :



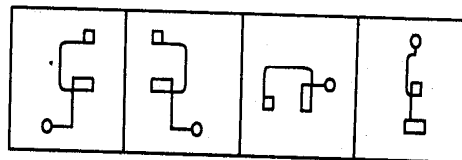
(A) (B) (C) (D)

48. Which of the answer figures is exactly the mirror image of the question figure, when the mirror is held on the line PQ ?

Question figure :

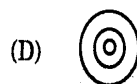
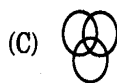


Answer figures :



(A) (B) (C) (D)

49. Which one of the following diagrams best depicts the relationship among Pigeons, Birds and Dogs ?



50. A word is represented by only one set of numbers as given in any one of the alternatives. The sets of numbers given in the alternatives are represented by two classes of alphabets as in two matrices given below. The columns and rows of matrix I are numbered from 0 to 4 and that of matrix II are numbered from 5 to 9. A letter from these matrices can be represented first by its row and next by its column, e.g., 'F' can be represented by 01, 13, 32, etc. and 'M' can be represented by 56, 68, 87, etc. Identify the set for the word NIFE.

MATRIX I

	0	1	2	3	4
0	E	F	G	H	I
1	H	I	E	F	G
2	F	G	H	I	E
3	I	E	F	G	H
4	G	H	I	E	F

MATRIX II

	5	6	7	8	9
5	L	M	N	O	P
6	O	P	L	M	N
7	M	N	O	P	L
8	P	L	M	N	O
9	N	O	P	L	M

- (A) 95, 30, 32, 43
 (B) 95, 30, 31, 43
 (C) 57, 42, 31, 43
 (D) 57, 41, 32, 43

**FOR VISUALLY HANDICAPPED
CANDIDATES ONLY**

45. If 5th of the month falls 2 days after Monday, what day of the week will be on the 18th of the month?
- (A) Monday (B) Tuesday
 (C) Wednesday (D) Thursday

46. From amongst the given alternatives select the one which belongs to the same class to which the given three words belong :

Christians, Hindus, Muslims

- (A) Gujaratis (B) Sikhs
 (C) Tamilians (D) Bengalis

47. Mohan's age is 10 years less than half of his father's age who is 5 years older than his mother. If his mother is 35 years old, what is Mohan's age?

- (A) 20 years (B) 15 years
 (C) 10 years (D) 5 years

48. Shyam ranks 15th in a class of 35 students. There are 5 students below Amit rankwise. How many students are there between Amit and Shyam?

- (A) 20 (B) 15
 (C) 14 (D) 12

49. If A is 50 m North-West of B and C is 50 m North-East of B and D is 50 m South of B, then who is in East direction of A?

- (A) A (B) B
 (C) C (D) D

50. A student divided a number by two when he was required to multiply it by 2. The answer he got was 2. What should have been the correct answer?

- (A) $\frac{1}{4}$ (B) 4
 (C) 6 (D) 8

PART - II : ENGLISH LANGUAGE

Directions : In questions no. 51 to 55, some parts of the sentences have errors and some have none. Find out which part of a sentence has an error and blacken the rectangle [■] corresponding to the appropriate letter (A, B, C). If there is no error, blacken the rectangle [■] corresponding to (D) in the Answer Sheet.

51. Neither of these two documents / support your claim / on the property. / No error.
 (A) (B) (C) (D)

52. Get this book / be published / in time. / No error.
 (A) (B) (C) (D)

53. He / is junior than / all his friends. / No error.
 (A) (B) (C) (D)

54. Had you / worked hard / you will have passed. / No error.
 (A) (B) (C) (D)

55. He works hardly / to make / both ends meet. / No error.
 (A) (B) (C) (D)

Directions : In questions no. 56 to 60, sentences are given with blanks to be filled in with an appropriate word(s). Four alternatives are suggested for each question. Choose the correct alternative out of the four and mark it in the Answer Sheet.

56. Have you got any idea as to what has happened to Akila ? I haven't seen her _____.

- (A) lately (B) later on
 (C) late (D) later

57. I _____ hard to establish the validity of the theory from morning.

- (A) have been trying
 (B) had tried
 (C) tried
 (D) am trying

58. _____ of defence personnel would be given transfers to their place of choice.

- (A) friends (B) wives
 (C) husbands (D) spouses

59. Sachin was standing _____ me.

- (A) aside (B) next
 (C) beside (D) besides

60. My sister and _____ are pleased to accept your invitation.

- (A) I (B) me
 (C) myself (D) I myself

Directions : In questions no. 61 to 65, out of the four alternatives, choose the one which best expresses the meaning of the given word and mark it in the Answer Sheet.

61. Deny

- (A) regain (B) refuse
(C) repair (D) reduce

62. Abuse

- (A) use (B) praise
(C) scorn (D) raise

63. Docile

- (A) submissive (B) stubborn
(C) strong (D) changeable

64. Considerate

- (A) agreeable (B) kind*
(C) like-minded (D) thoughtful

65. Nurture

- (A) to encourage (B) to grow
(C) to see (D) to maintain

Directions : In questions no. 66 to 70, choose the word opposite in meaning to the given word and mark it in the Answer Sheet.

66. Concur

- (A) disagree (B) disappear
(C) disarrange (D) discourage

67. Veneration

- (A) fear (B) reverence
(C) remorse (D) disrespect

68. Insolent

- (A) ignorant (B) proud
(C) laudable (D) humble

69. Urban

- (A) rustic (B) rural
(C) civil (D) foreign

70. Incredible

- (A) possible (B) believable
(C) enjoyable (D) imaginary

Directions : In questions no. 71 to 75, four alternatives are given for the idiom/phrase. Choose the alternative which best expresses the meaning of the idiom/phrase and mark it in the Answer Sheet.

71. To bring to light

- (A) to reveal
(B) to conceal
(C) to provide luminescence
(D) to appeal

72. To hit the jackpot

- (A) to gamble
(B) to get an unexpected victory
(C) to be wealthy
(D) to make money quickly

73. To burn the candle at both ends

- (A) to spend cautiously
(B) to be stingy
(C) to be extravagant
(D) to survive difficulty

74. Status quo

- (A) unchanged position
(B) excellent place
(C) unbreakable statue
(D) long queue

75. By fair means or foul

- (A) without using common sense
(B) without difficulty
(C) in any way, honest or dishonest
(D) having been instigated

Directions : In questions no. 76 to 80, a part of the sentence is underlined. Below are given alternatives to the underlined part at (A), (B) and (C) which may improve the sentence. Choose the correct alternative. In case no improvement is needed, your answer is (D).

76. Rakesh didn't knew my address.

- (A) didn't known
- (B) didn't have
- (C) didn't know
- (D) No improvement

77. It was quite clear that the runner could be able to improve upon his own record.

- (A) will be able
- (B) should be able
- (C) would be able
- (D) No improvement

78. This work of art is worthy to praise.

- (A) for
- (B) of
- (C) about
- (D) No improvement

79. To alleviate the pain of losing his only son, he took up meditation.

- (A) lessen
- (B) minimalise
- (C) lesson
- (D) No improvement

80. The Prime Minister established a commission to look after the plight of the widows.

- (A) formed
- (B) created
- (C) set up
- (D) No improvement

Directions : In questions no. 81 to 85, out of the four alternatives, choose the one which can be substituted for the given words/sentence.

81. Person with whom one works

- (A) contemporary
- (B) companion
- (C) colleague
- (D) partner

82. Honesty of character

- (A) integrity
- (B) rectitude
- (C) honour
- (D) dignity

83. The act or practice of spying

- (A) strategy
- (B) espionage
- (C) diplomacy
- (D) enumeration

84. Expressions of sympathy

- (A) congratulation
- (B) condolence
- (C) compliment
- (D) condemnation

85. An instrument used to record sound

- (A) gramophone
- (B) hydrophone
- (C) phonograph
- (D) megaphone

Directions : In questions no. 86 to 90, groups of four words are given. In each group, one word is correctly spelt. Find the **correctly spelt** word and mark your answer in the Answer Sheet.

86. (A) Gaurd (B) Gard
(C) Guard (D) Garad

87. (A) Coreigible (B) Coraegible
(C) Correigible (D) Corrigible

88. (A) Secretariel (B) Secreterel
(C) Secreterial (D) Secretarial

89. (A) Aquisition (B) Acquization
(C) Acquisition (D) Acquisation

90. (A) Vaccation (B) Vocation
(C) Vecation (D) Vecasion

Directions : (Questions no. 91 to 100). In the following passage, some of the words have been left out. First read the passage over and try to understand what it is about. Then fill in the blanks with the help of the alternatives given. Mark your answer in the Answer Sheet.

The word 'ticket' is 91 to every language in India. 92 those who are actively 93 in the political process 94 a ticket as permission to 95 an election as candidate 96 a political party. The 97, if elected, sits in the 98 assembly, or any other 99 for which he/she contests, as 100 of that party.

91. (A) general (B) peculiar
(C) common (D) familiar

92. (A) So (B) But
(C) And (D) Since

93. (A) involved (B) seen
(C) leading (D) attracted

94. (A) look (B) interpret
(C) interfere (D) interrupt

95. (A) stand in (B) campaign
(C) vote (D) contest

96. (A) inside (B) of
(C) for (D) to

97. (A) leader (B) party
(C) candidate (D) ticket

98. (A) legislative (B) legal
(C) political (D) electoral

99. (A) body (B) election
(C) party (D) institute

100. (A) candidate (B) participant
(C) representative (D) interpreter

PART - III : QUANTITATIVE APTITUDE

- 101.** A number consists of two digits and the digit in the ten's place exceeds that in the unit's place by 5. If 5 times the sum of the digits be subtracted from the number, the digits of the number are reversed. Then the sum of digits of the number is
- (A) 11 (B) 7
(C) 9 (D) 13
- 102.** The greatest among the numbers $\sqrt[4]{3}$, $\sqrt[5]{4}$, $\sqrt[10]{12}$, 1 is
- (A) 1 (B) $\sqrt[5]{4}$
(C) $\sqrt[4]{3}$ (D) $\sqrt[10]{12}$
- 103.** A fraction becomes $\frac{1}{6}$ when 4 is subtracted from its numerator and 1 is added to its denominator. If 2 and 1 are respectively added to its numerator and denominator, it becomes $\frac{1}{3}$. Then, the LCM of the numerator and denominator of the said fraction, must be
- (A) 14 (B) 350
(C) 5 (D) 70
- 104.** $(4^{61} + 4^{62} + 4^{63})$ is divisible by
- (A) 3 (B) 11
(C) 13 (D) 17
- 105.** The ratio of two numbers is 4 : 5 and their H.C.F. is 8. Then their L.C.M. is
- (A) 130 (B) 140
(C) 150 (D) 160
- 106.** Each interior angle of a regular polygon is 144° . The number of sides of the polygon is
- (A) 8 (B) 9
(C) 10 (D) 11
- 107.** There is a pyramid on a base which is a regular hexagon of side 2a cm. If every slant edge of this pyramid is of length $5a/2$ cm, then the volume of this pyramid is
- (A) $3a^3 \text{ cm}^3$
(B) $3\sqrt{2} a^3 \text{ cm}^3$
(C) $3\sqrt{3} a^3 \text{ cm}^3$
(D) $6a^3 \text{ cm}^3$
- 108.** Two solid right cones of equal heights and of radii r_1 and r_2 are melted and made to form a solid sphere of radius R. Then the height of the cone is
- (A) $\frac{4R^2}{r_1^2 + r_2^2}$ (B) $\frac{4R}{r_1 + r_2}$
(C) $\frac{4R^3}{r_1^2 + r_2^2}$ (D) $\frac{R^2}{r_1^2 + r_2^2}$
- 109.** The ratio of radii of two cones is 3 : 4 and the ratio of their heights is 4 : 3. Then the ratio of their volumes will be
- (A) 3 : 4 (B) 4 : 3
(C) 9 : 16 (D) 16 : 9
- 110.** The ratio of the areas of the circumcircle and the incircle of an equilateral triangle is
- (A) 2 : 1 (B) 4 : 1
(C) 8 : 1 (D) 3 : 2

111. The area of the four walls of a room is 660 m^2 and its length is twice its breadth. If the height of the room is 11 m, then the area of its floor (in m^2) is
- (A) 120 (B) 150
(C) 200 (D) 330
112. A cylindrical rod of iron whose height is eight times its radius is melted and cast into spherical balls each of half the radius of the cylinder. The number of such spherical balls is
- (A) 12 (B) 16
(C) 24 (D) 48
113. A and B can do a piece of work in 10 days. B and C can do it in 12 days. A and C can do it in 15 days. How long will A take to do it alone?
- (A) 24 days (B) 20 days
(C) 40 days (D) 30 days
114. A does half as much work as B in one-third of the time taken by B. If together they take 10 days to complete a work, then the time taken by B alone to do it would have been
- (A) 30 days (B) 25 days
(C) 6 days (D) 12 days
115. A single discount equivalent to a discount series 20%, 20% and 10% is
- (A) 50% (B) 48.4%
(C) 42.4% (D) 40.4%
116. If a shopkeeper marks the price of goods 50% more than their cost price and allows a discount of 40%, what is his gain or loss percent?
- (A) Gain of 10% (B) Loss of 10%
(C) Gain of 20% (D) Loss of 20%
117. To get the ratio $p : q$ (for $p \neq q$), one has to add to each term of the ratio $x : y$, the number
- (A) $\frac{px + qy}{p - q}$ (B) $\frac{qx - py}{p - q}$
(C) $\frac{px - qy}{p - q}$ (D) $\frac{py - qx}{p - q}$
118. Two containers have acid and water mixed respectively in the ratio 3 : 1 and 5 : 3. To get a new mixture with ratio of acid to water as 2 : 1, the two types have to be mixed in the ratio
- (A) 1 : 2 (B) 2 : 1
(C) 2 : 3 (D) 3 : 2
119. a, b, c, d, e, f, g are consecutive even numbers. j, k, l, m, n are consecutive odd numbers. The average of all the numbers is
- (A) $3\left(\frac{a+n}{2}\right)$ (B) $\left(\frac{l+d}{2}\right)$
(C) $\frac{a+b+m+n}{4}$ (D) $\frac{j+c+n+g}{4}$
120. The average of three numbers is 40. The first number is twice the second and the second one is thrice the third number. The difference between the largest and the smallest numbers is
- (A) 30 (B) 36
(C) 46 (D) 60

121. By selling 12 oranges for ₹ 60, a man loses 25%. The number of oranges he has to sell for ₹ 100, so as to gain 25% is
 (A) 10 (B) 11
 (C) 12 (D) 15
122. The cost price of 400 lemons is equal to the selling price of 320 lemons. Then the profit percent is
 (A) 15% (B) 20%
 (C) 25% (D) 40%
123. A man spends 75% of his income. His income increased by 20% and he increased his expenditure by 15%. His savings will then be increased by
 (A) 33% (B) $33\frac{1}{3}\%$
 (C) 35% (D) 40%
124. 25 litres of salt solution contains 6% salt. How many litres of water must be added so as to get a resultant solution containing 5% salt?
 (A) 4 litres (B) 5 litres
 (C) 6 litres (D) 8 litres
125. The current of a stream runs at the rate of 4 km an hour. A boat goes 6 km and comes back to the starting point in 2 hours. The speed of the boat in still water is
 (A) 6 km/hour (B) 8 km/hour
 (C) 7.5 km/hour (D) 6.8 km/hour
126. On what sum of money will the difference between the simple interest and the compound interest for 2 years at 8% per annum be equal to ₹ 8?
 (A) ₹ 1200 (B) ₹ 1250
 (C) ₹ 1300 (D) ₹ 1350
127. If $2x + \frac{1}{3x} = 5$, find the value of $\frac{5x}{6x^2 + 20x + 1}$.
 (A) $\frac{1}{4}$ (B) $\frac{1}{6}$
 (C) $\frac{1}{5}$ (D) $\frac{1}{7}$
128. If for two real constants a and b , the expression $ax^3 + 3x^2 - 8x + b$ is exactly divisible by $(x + 2)$ and $(x - 2)$, then
 (A) $a = 2, b = 12$
 (B) $a = 12, b = 2$
 (C) $a = 2, b = -12$
 (D) $a = -2, b = 12$
129. If $x^2 - 3x + 1 = 0$, then the value of $x^3 + \frac{1}{x^3}$ is
 (A) 9 (B) 18
 (C) 27 (D) 1