

# **NDRIVE**



**USER GUIDE**

## Information

### **Congratulations on buying your NDrive!**

NDrive is a personal navigation solution. Based on GPS technology, it provides a simple and accurate navigation through visual and voice instructions, which includes names of roads and locations, door-to-door navigation and detailed information about points of interest in several languages. NDrive is multi-platform software, compatible with Windows CE.NET, Windows Mobile, Symbian and Linux operating systems. Its portfolio provides you with detailed and accurate digital maps of the whole world, through a simple but yet powerful interface which is also designed for inexperienced users.

On starting to navigate, you'll notice that despite its modest appearance and intuitive menus, your new NDrive turns out to be extremely efficient in its primary function: Choosing the best route to your destination!

If you want to search for a specific function in your NDrive, look it up in the "**I WANT TO...**"list of contents. You can also browse through the manual for more comprehensive details on all the functions on your new NDrive.

## Index (I WANT TO...)

... BROWSE NDRIVE MENUS.....	pag.4
... SEARCH FOR AN ADDRESS.....	pag.10
... SEARCH FOR A FAVOURITE.....	pag.12
... FIND HOME.....	pag.13
... SEARCH FOR A RECENT LOCATION.....	pag.14
... SEARCH FOR A POINT OF INTEREST.....	pag.15
... NAVIGATE TO AN ADDRESS.....	pag.16
... NAVIGATE HOME.....	pag.18
... NAVIGATE TO A RECENT LOCATION.....	pag.18
... NAVIGATE TO A FAVOURITE.....	pag.19
... NAVIGATE TO A POINT OF INTEREST.....	pag.20
... ADD A FAVOURITE.....	pag.22
... EDIT A FAVOURITE.....	pag.23
... DELETE A FAVOURITE.....	pag.23
... SEND MY LOCATION.....	pag.24
... SEARCH / NAVIGATE BY COORDINATES.....	pag.25
MAP MODE SCREEN DETAILS.....	pag.26
NAVIGATION MODE SCREEN DETAILS.....	pag.27
GPS INFORMATION SCREEN DETAILS.....	pag.28
TIPS FOR A BETTER USE.....	pag.29

## ...BROWSE NDRIVE MENUS

### SETTINGS



There are a lot of settings you can configure to change NDrive to your needs.

### GENERAL

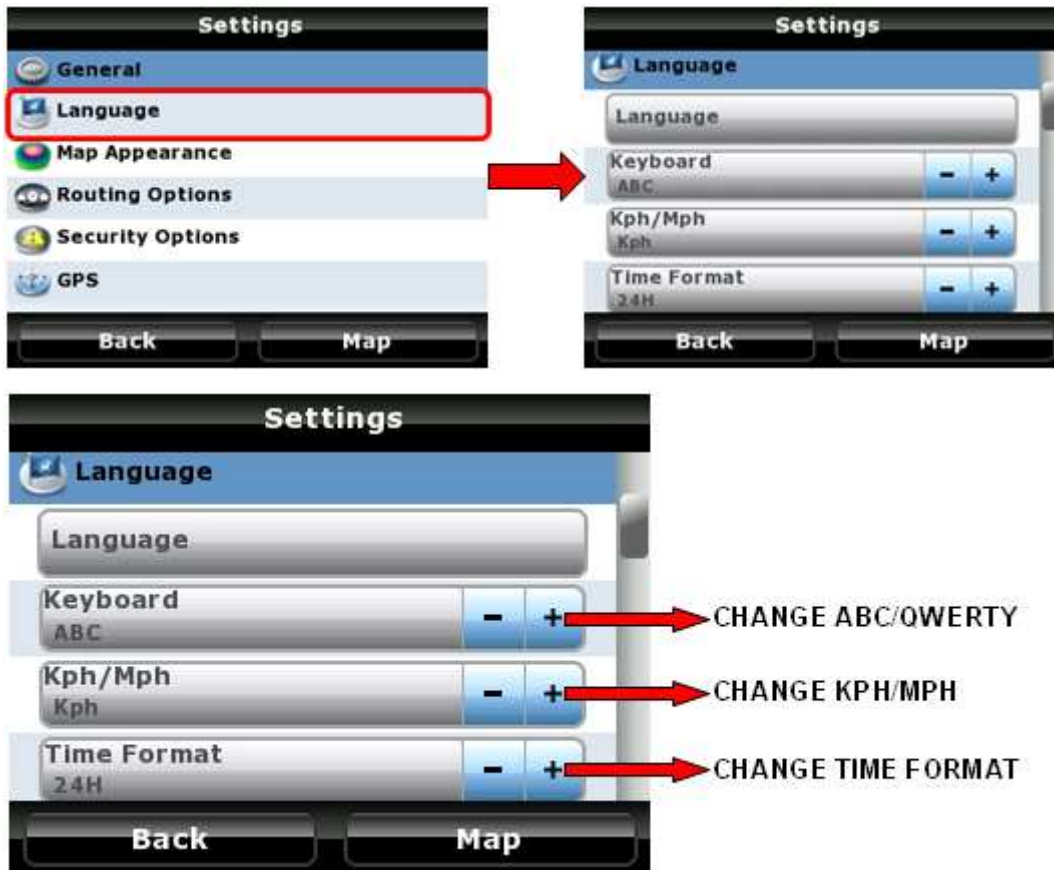
To configure some general settings on your NDrive, follow the next steps:



- **Speaker:** Allows you to change the NDrive voice instruction volume, from “Off” to level 5. Always set a volume level that doesn’t interfere with your driving.
- **Light:** Allows you to adjust the brightness of the backlight.
  - Always On: Backlight never switches off completely.
  - Smart Power Save: Backlight decreases its intensity after a previously set period of time, but it increases back before each manoeuvre.
  - System: Backlight resets to default values.

## LANGUAGE

In this menu you can set the language and other options for your NDrive. Please note that when you change the language the spoken instructions will also change to the language of your choice.



## MAP APPEARANCE

In this menu you can set your preferences on how you view the map and its components.



- **Auto Zoom:** You can turn the map's automatic zoom on or off when NDrive is en-route. If you keep this setting on, the zoom will change according to the speed you're travelling, automatically adjusting to allow a better view of the map.
- **3D Landmarks:** Allows you to enable or disable 3D buildings which can be found in cities on your NDrive.
- **Templates:** Allows you to choose your map colour scheme. There is a great choice of scheme colours, including some especially designed for night.
- **Favourite:** Allows you to manage your favourites.
- **Point Of Interest:** Allows you to choose what type of Points of Interests should appear on the map.

## ROUTING OPTIONS

In this configuration you will be able to adjust the way in which NDrive calculates routes.



- **Routing Options**
  - Fastest: NDrive calculates its route giving high priority to the best roads.
  - Shortest: NDrive calculates its route to find the shortest way, disregarding the quality of the roads. This can make short routes take longer.
  - Pedestrian Mode: In order to use your NDrive when walking, select Pedestrian Mode.
- **Tolls**
  - Yes: NDrive will use toll roads if necessary.

- Avoid: When calculating its route, NDrive will avoid toll roads. If that's not possible, you'll hear the information "Toll" at the end of the calculation.

## SECURITY OPTIONS

In this menu you are able to set features related to some NDrive warnings you might get while driving.



- **Speed Limit Alarm:** If you wish, NDrive will activate a sound alarm every time you exceed a certain speed. This allows you to set your speed or turn the alarm off. Note: Actual speed is always lower than the one shown by your vehicle's speed indicator.
- **Road Speed Alert:** Every road has a legal speed limit. You can, at this point, choose to be warned each time you exceed the speed limit of the road you're travelling on. E.g. every time you exceed the 70 mph speed limit on a Motorway a visual alarm, a sound alarm or both will be activated, according to your preferences.
- **Safety Camera Alert:** Allows you to activate or deactivate the alerts for safety camera positions on roads which are contained within your NDrive's database.

## GPS

The GPS configuration menu allows you to change options related to your NDrive satellite signal reception.

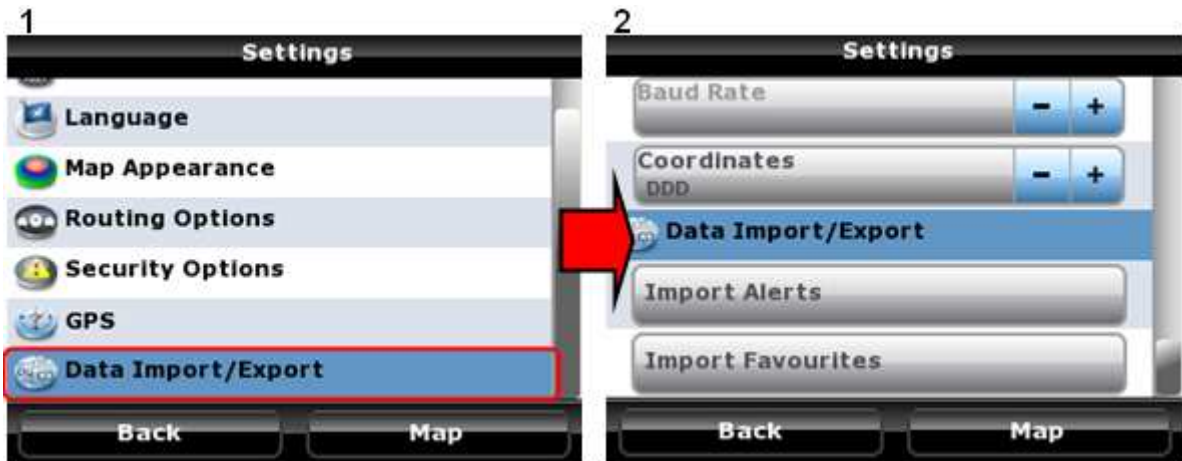


- **GPS:** You can switch off your NDrive GPS signal reception at any time. This can be useful if you want to look through NDrive maps in GPS signal covered areas, as is your NDrive is programmed to find your location within seconds.
- **Comm. Port and Baud Rate:** These two options are only available in Windows Mobile platforms, in equipments where it is necessary to configure the NDrive access to the GPS receiver.
- **Coordinates:** Allows you to set the format of coordinates which you want to be displayed by your NDrive.



## DATA IMPORT / EXPORT

In this menu you can import and export favourites created by you or with Google Earth and saved in the "*kml*" format. It is also possible to Import safety camera packages available throughout the Internet. With the Export feature you can also trade favourite locations with other NDrive users.



With this feature you can:

- Import favourite points previously pinpointed in Google Earth to your favourites' folder;
- Import safety camera packages and replace them with the ones you have;
- Export and share your favourites with any NDrive user;
- Manage your favourites using Google Earth.

Despite being very intuitive, this feature requires that the user follows some simple procedures. For detailed information please refer to the "Data Import and Export Reference Guide" available on the website [www.ndriveweb.com](http://www.ndriveweb.com).

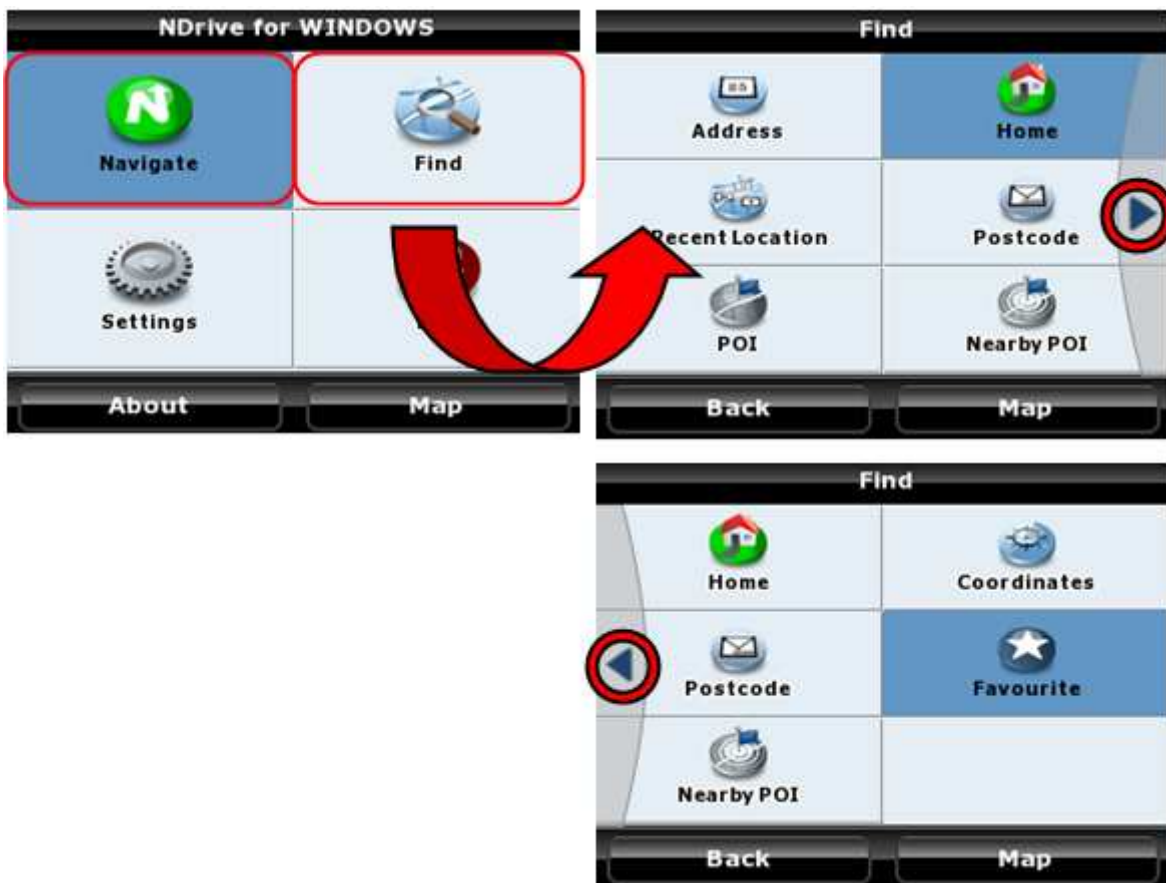
**Very Important:** If all procedures are correctly followed by the user, this feature won't reveal any data loss issue. Anyway NDrive won't be responsible for any favourite or safety camera point's loss along the process.

## FIND / NAVIGATE

After these basic NDrive system settings, the following section shows the two submenus which are presented on the main Menu screen.

When you click the Search or the Navigate buttons, they will expand to the next submenu, so we'll refer to both in this section.

The NDrive advanced search system has some features that allow a more effective indexation of locations searched by the user: Cities, Departments, Points of Interest, etc. Among these new features is the indexation of the streets to all the geographical organization levels, like municipalities, city departments, etc. Other advanced feature makes it possible to search for the same Point Of Interest in several languages, in countries that have more than one official language.



## ...SEARCH AN ADDRESS

Every time you need to locate any address on your NDrive map, follow the steps as indicated in the pictures below:



Note: You can perform searches using the name's initials, the most uncommon name or the full designation.

Alternatively, if you do not know the exact door number, you can perform the search by choosing one of the crossings that the given street has, by choosing "**Crossing**". This option will list all the streets that cross with the street you were searching for.



## ...SEARCH FOR A FAVOURITE

To locate a previously user defined favourite, follow the steps as indicated in the pictures below:



## ...FIND HOME

To locate a previously defined point on the map such as "Home", follow these steps:



## ...SEARCH FOR A RECENT LOCATION

Sometimes you will need to look for a previously searched location. To avoid a new search, choose “**Recent Location**” as shown in the pictures below:

1



2



3



## ...SEARCH FOR A POINT OF INTEREST

- **By Address**

Follow these steps to locate a Point of Interest on the map, such as a Restaurant, a Historical Building or a Hotel, etc:



- **Nearby POI**

Alternatively, you can find those Points of Interest closest to your current location. If you have your GPS signal deactivated, you can only find the Points of Interest closest to the place you currently have the pointer on your NDrive screen.





## ...NAVIGATE TO AN ADDRESS

As a navigation device, this might be your NDrive's primary function. Follow these steps in order to navigate to any address.



**Note:** You can perform searches using the name's initials, the most uncommon name or the full designation.

Just like in the Search option, when choosing an address to navigate to, you can also specify the crossing instead of the door number:



## ...NAVIGATE HOME

Follow these steps to navigate to the point previously set as “Home”.



## ...NAVIGATE TO A RECENT LOCATION

Follow these steps to navigate to a previously searched location.



## ...NAVIGATE TO A FAVOURITE

Follow these steps to navigate to a point previously defined as a "Favourite".

1



2



3



4



## ...NAVIGATE TO A POINT OF INTEREST

- **By Address**

You can navigate to any Point of Interest in your NDrive's database by its address.



- **Nearby POI**

Alternatively, you can navigate to a Point of Interest which is close to your current location.

1



2



3



## ...ADD A FAVOURITE

You can set “**Favourite**” locations in your NDrive, such as frequently visited locations, personal points of interest, etc. Any location on the map can be set as a user's “**Favourite**”.

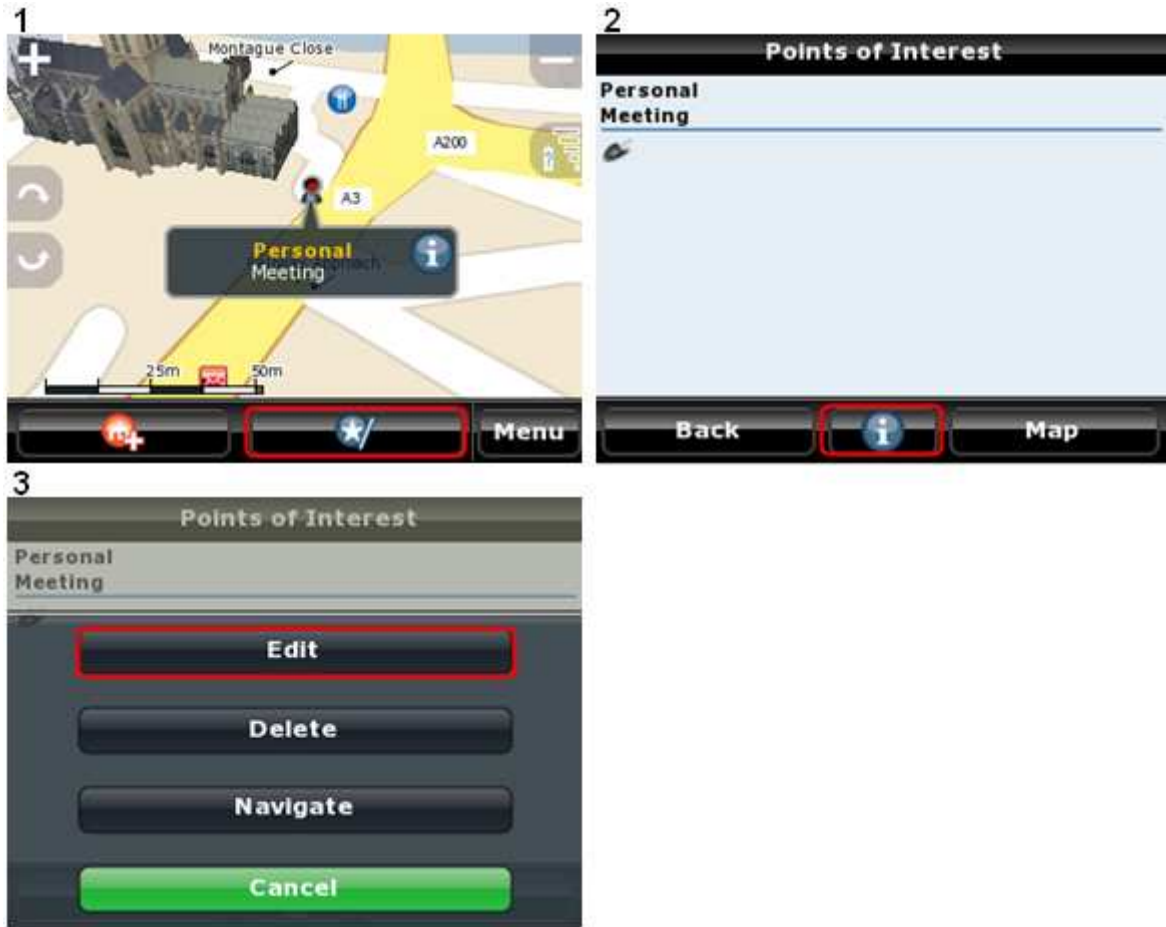
Look carefully at the following pictures describing how to add any location to your Favourites:



**Note:** in the “group” section you can choose which group your favourite fits into or create a new group, for instance, "Landscapes".

## ...EDIT A FAVOURITE

You can change the information of your new favourites at any time.



## ...DELETE A FAVOURITE

Follow this procedure to delete a favourite:





## **...SEND MY LOCATION**

If you need someone to know where you are, you can do it very effectively by using your NDrive. If you want to send your location to someone who also owns a NDrive and the same map, follow the procedures to send them your location:



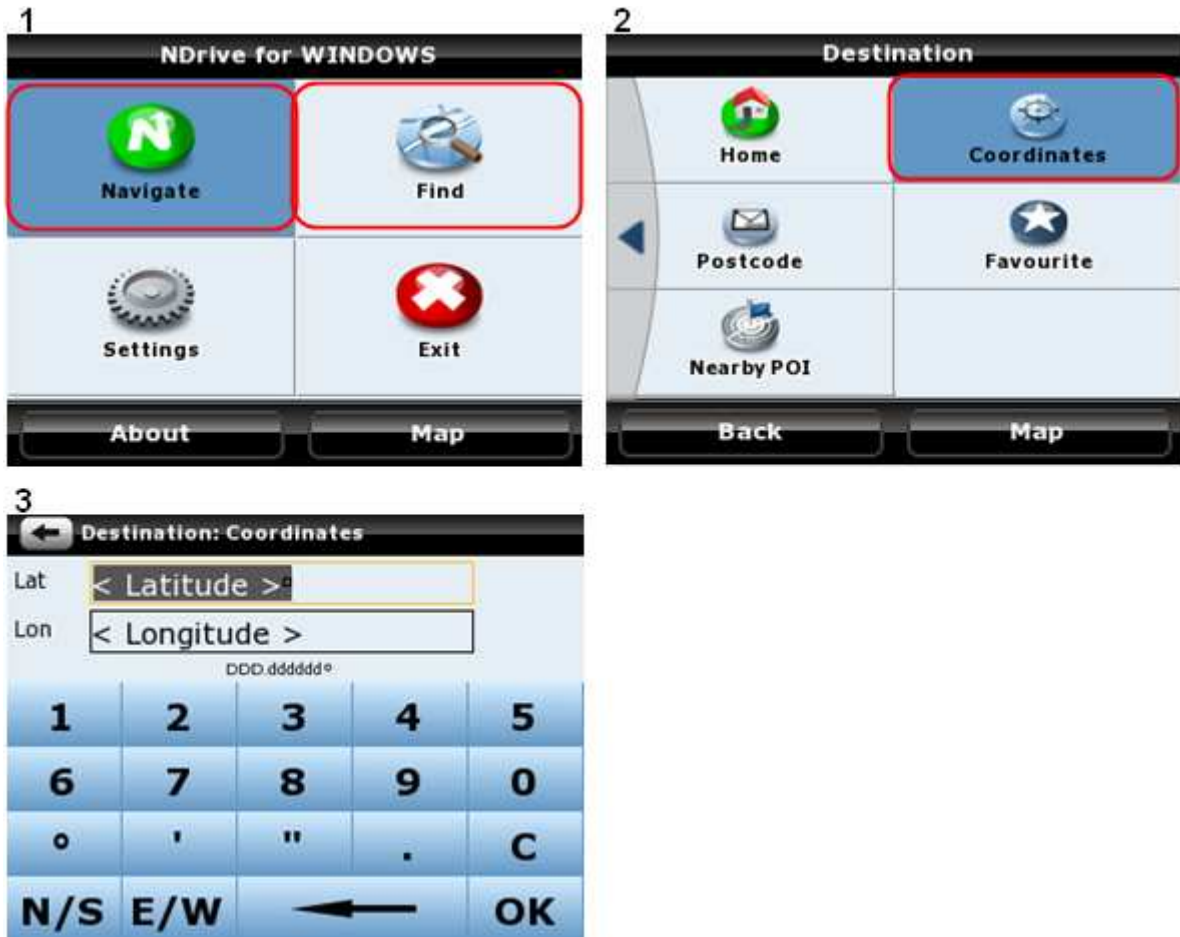
Your friend will receive a perfectly normal message, but once they activate their NDrive then will be notified of the receipt of a location. You will be able to navigate from your current position to the received location or save it as a favourite.

**Note:** This function is only available through equipment provided with a gsm connection and a mobile telephone service, such as PDA's or Symbian mobile phones.

**Note:** to successfully send a location, you must have enough credit to send a written message (sms). The prices vary according to the mobile telephone service you may use. NDrive has no control over this process.

## SEARCH / NAVIGATE BY COORDINATES

One other way to locate or navigate to a given location is by using its coordinates. Please refer to the figures below that explain the process to locate a point by its coordinates:



**Note:** In the "Settings", "GPS" menu you can customize the coordinate format that you prefer to use. There are three different formats available:

- **DMS:** Degrees, Minutes and Seconds
- **DMM:** Degrees and Minutes
- **DDD:** Degrees and decimal degrees

## MAP MODE SCREEN DETAILS

When you're not navigating, you can view useful information on your NDrive screen. See the next picture and description below:

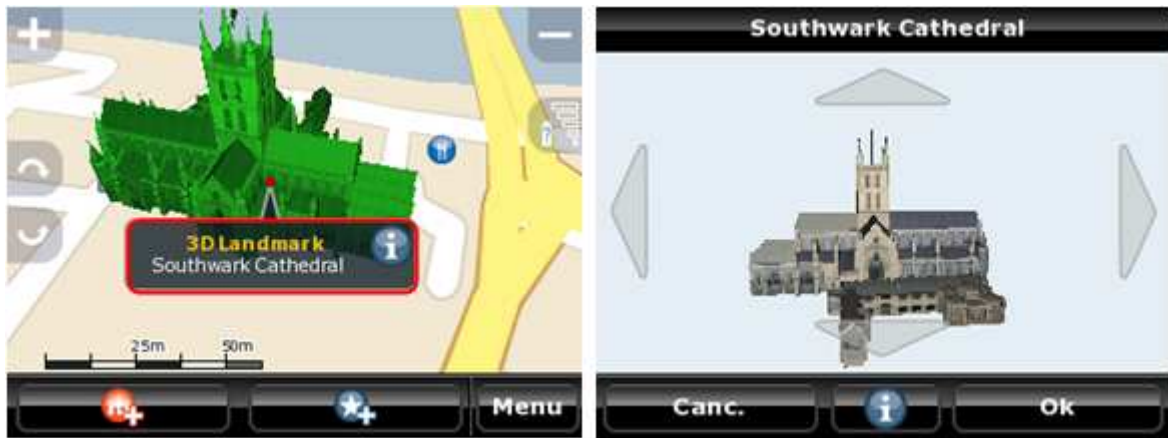


Caption:

1. Zoom In
2. Zoom Out
3. Battery and GPS signal information
4. Access Menu
5. Add pinpointed place to Favourites
6. Define the Pinpointed place as "HOME"
7. Map Scale

Note: the pictures on the map depend upon the NDrive model which you are using, as well as your location on the map or on the position of the cursor.

Some NDrive maps have 3D representations of the most important buildings. Those 3D buildings can be seen while exploring the map or navigating, but you can also take a close look at them in many angles.



## NAVIGATION MODE SCREEN DETAILS

While navigating, you will notice the NDrive screen shows you some useful data:



Legend:

1. Zoom In
2. Zoom Out
3. Remaining battery charge and GPS signal reception quality reading
4. Go to Menu (view itinerary, etc)
5. Current Speed
6. Maximum Legal Speed of the road you are travelling in
7. Distance to destination

8. Remaining time for arrival
9. Next Manoeuvre
10. Name of the current road
11. Distance to next Manoeuvre
12. Name of the next road

Note: Despite the importance of NDrive graphical information while navigating, always pay more attention to sound instructions in order not to distract you.

## GPS INFORMATION SCREEN DETAILS

The Global Positioning System is commonly known as GPS and is a satellite positioning system. Each GPS satellite sends a signal to your NDrive device on the ground. Therefore, GPS receptors are passive satellite signal receivers. They also require a clear sky view and may underperform on dense wooded areas or next to tall buildings. GPS performance depends on a very precise time reference, which is granted by the U. S. Naval Observatory (USNO) atomic clocks. The global positioning system (GPS) makes use of a satellite network, which allows us to use our receivers and thus to know geographical position anytime, anywhere on the planet.

You can at any time get additional information on the signal reception quality, as well as on the geographical features of your current location:



Legend:

1. No of satellite signals received by the device
2. Instant speed
3. Altitude
4. Local coordinates

## TIPS FOR A MORE EFFECTIVE USE

- **Satellite signal reception:** for a more effective GPS signal reception, place your NDrive on your vehicle's windscreen, the closest you can from the instruments panel in order not to interfere with the driver's vision. If used outside, it may become more difficult for the NDrive to locate satellites in dense wooded areas or next to tall buildings. On its first use, first satellite signal reception may take up to 30 minutes. After that, this period greatly decreases.
- **Apparently incoherent routes:** did NDrive calculate an apparently incoherent route? This is a normal situation and may be caused by several reasons, such as low GPS signal quality, the driver's "usual route" habit or maybe some map errors. As far as map errors are concerned, NDrive and its official map providers continue to make all their efforts to keep geographical data the most up to date as possible. Sometimes though due to constant changes on road systems, some errors may occur on certain routes. Regular updating your loaded maps are recommended to minimize this problem.