

GPAT-2012

Q.1. Which of the following respective Phase-I and Phase-II reactions are the most common drug biotransformation reactions?

- (A) Oxidation and Glucuronidation
- (B) Reduction and Acetylation
- (C) Hydrolysis and Glucuronidation
- (D) Oxidation and Glutathion conjugation

Ans : A (MINOR TEST 1 & MAJOR 8)

Q.2 Which one of the following drugs has positive inotropic and negative chronotropic action?

- (A) Dopamine (B) Epinephrine (C) Digoxin (D) Isoprenaline

Ans: C (Semimajor 1)

Q.3 Which one of the following therapeutic classes has been proved clinically as a first line therapy for heart failure and has shown decreased hospitalization, improved symptoms and delayed disease progression?

- (A) Cardiac glycosides (B) ACE Inhibitors (ACEIs) (C) Renin Antagonists (D) Nitrites

Ans: B

Q.4 Which one of the following glucose transporters is the new drug target for the management of Type-2 diabetes mellitus?

- (A) Sodium glucose linked transporter-2 (SGLT2)
- (B) Glucose transporter-1 (GLUT1)
- (C) Sodium glucose linked transporter-1 (SGLT1)
- (D) Glucose transporter-2 (GLUT2)

ANS. A

Q.5 Which one of the following modes of HIV transmission carries highest relative risk of infection with single exposure?

- (A) Transfusion of blood and blood products
- (B) Perinatal - from mother to child
- (C) Sexual contacts with infected partners
- (D) Syringe sharing with drug addicts

Ans. A

Q.6 Which of the followings are the critical neurotransmitters playing major role in depression?

- (A) Acetylcholine, Norepinephrine and Dopamine

- (B) Dopamine, Norepinephrine and Serotonin
- (C) Serotonin, Dopamine and γ -Amino butyric acid
- (D) Acetylcholine, Serotonin and γ -Amino butyric acid

Ans. B

Q.7 A 55 years old man is under DOTS treatment for pulmonary tuberculosis for the last four months. Now, he has developed symptoms of peripheral neuritis. Which one of the followings is the right addition to his therapy to manage peripheral neuritis?

- (A) Cyanocobalamin
- (B) α -Lipoic acid
- (C) Pyridoxine
- (D) Prednisolone

ANS: C (MINOR TEST 11- In that we asked about which of the following drug given to TB patient to reduce the peripheral neuritis side effect of ANTI TB drugs)

Q.8 What is the primary mechanism of action of local anesthetics?

- (A) Activation of ligand-gated potassium channels
- (B) Blockade of voltage-gated sodium channels
- (C) Stimulation of voltage-gated N-type calcium channels
- (D) Blockade of GABA-gated chloride channels

ANS. B (MINOR TEST -3)

Q.9 Which one of the following anti-asthmatic drugs can cause convulsions and arrhythmia?

- (A) Prednisolone
- (B) Salmeterol
- (C) Zafirlukast
- (D) Theophylline

ANS.D (SEMI MAJOR test -1)

Q.10 Which one of the following anti-arrhythmic drugs acts by inhibiting potassium, sodium and calcium channels?

- (A) Quinidine
- (B) Lignocaine
- (C) Amiodarone
- (D) Flecainide

ANS: C

Q.11 A 48 years old woman is having the symptoms of weight gain, cold intolerance, constipation, bradycardia, puffy face, lethargy and dry skin. These symptoms are suggestive of which of the followings?

- (A) Over use of corticosteroid
- (B) Hypothyroidism
- (C) Estrogen deficiency
- (D) Over use of thyroxin sodium

ANS: B

Q.12 Increased risk of hypoglycemia and weight gain is the common side effect of drugs used in the management of Type-2 diabetes mellitus. Followings are some commonly used drugs, alone or in

combination, for the management of Type-2 diabetes mellitus:

[P] : Metformin [Q]: Pioglitazone

[R]: Glipizide [S] : Sitagliptin

Choose the correct combination which is weight neutral and without risk of hypoglycemia.

- (A) P and Q (B) Q and R (C) R and S (D) P and S

ANS: D (MAJOR TEST - 1)

Q.13 Which one of the following receptors is NOT a ligand-gated ion channel receptor?

- (A) Nicotinic Receptor (B) 5HT₃ - Receptor
(C) GABA_A - Receptor (D) H₂ – Receptor

ANS: D

Q.14 Which one of the following classes of drugs causes side effects like dryness of mouth, tachycardia, urinary retention, constipation, blurring of vision, precipitation of glaucoma, drowsiness and impairment of cognition?

- (A) Anti-adrenergic (B) Anti-cholinergic
(C) Anti-serotonergic (D) Anti-dopaminergic

ANS: B

Q.15 Which of the following cytokines are the most important regulators in inflammation and are the targets for anti-inflammatory agents used in rheumatoid arthritis?

- (A) Tumor necrosis factor- α and Interleukin-1
(B) Acetylcholine esterase and Eicosanoids
(C) Leukotrienes and Isoprostanes
(D) Adhesion factor and Monoamine oxidase A

ANS: A (MINOR TEST-3)

Q.16 Which one of the followings is a FALSE statement for competitive antagonists?

- (A) They have an affinity for the agonist binding site on receptor
(B) They have no intrinsic activity
(C) They cause parallel rightward shift of the control dose response curve
(D) Maximum response of the agonist cannot be achieved in their presence by increasing the concentration of the agonist.

ANS: D (MINOR TEST -1)

Q.17 Atypical antipsychotics differ from the typical antipsychotics in various ways that define them as atypical. Which one of the followings is NOT a defining property of the atypical antipsychotics?

- (A) Sustained hyperprolactinemia
(B) Improved efficacy in treating the negative symptoms

- (C) Lower risk for extrapyramidal side effects (EPSs)
- (D) Greater serotonin receptor blockade than dopamine blockade

ANS: A

Q. 18 Which one of the following drugs produces significant relaxation of both venules and arterioles?

- (A) Hydralazine (B) Minoxidil
- (C) Diazoxide (D) Sodium nitroprusside

ANS: D (MINOR TEST- 6)

Q.19 Antiviral action of purine analogues is primarily related to the followings:

[P] : Inhibition of RNA synthesis [Q] : Inhibition of DNA polymerase

[R] : Immunomodulation [S] : Inhibition of viral penetration

Choose the correct option:

- (A) R is correct and Q is incorrect (B) Q is correct and S is incorrect
- (C) P is correct and R is incorrect (D) S is correct and P is incorrect

ANS: B

Q.20 All of the given four drugs are sympathomimetics:

[P] : Adrenaline [Q]: Isoprenaline

[R] : Phenylephrine [S] : Noradrenaline

Choose the correct statement related to their effects on blood pressure.

- (A) P and Q increase systolic and diastolic blood pressure
- (B) Q and R increase systolic and diastolic blood pressure
- (C) R and S increase systolic blood pressure
- (D) P and S increase systolic and diastolic blood pressure

ANS: C

Q.21 All of the given four drugs are neuromuscular blocking agents.

[P] : Gallamine [Q]: Succinylcholine

[R] : Vecuronium [S] : d-Tubocurarine

Choose the correct statement about them.

- (A) P and Q are competitive neuromuscular blocking agents
- (B) Q and R are competitive neuromuscular blocking agents
- (C) R and S are non-competitive neuromuscular blocking agents
- (D) P and S are competitive neuromuscular blocking agents

ANS: D

www.gpatindia.com

Q.22 Which one of the followings is a tyrosine kinase inhibitor indicated for a variety of malignancies?

- (A) Imatinib (B) Paclitaxel (C) Ezetimibe (D) Mitomycin

ANS: A

Q.23 Which one of the followings is the most likely positive sign of pregnancy when detected in urine?

- (A) Estrogens
(B) Progesterone
(C) Human Chorionic Gonadotropin (HCG)
(D) Corticotrophic Hormone

ANS: C (MAJOR TEST - 4)

Q.24 Followings are some opioid analgesics:

[P] : Morphine [Q]: Pethidine

[R] : Pentazocine [S] : Fentanyl

Choose the correct order of respiratory depressant propensity of these agents.

- (A) P>Q>R>S (B) Q>P>R>S (C) R>P>Q>S (D) S>P>Q>R

ANS: D

Q.25 Corticosteroids are administered to treat some of the given disease states:

[P] : Peptic ulcer [Q] : Bronchial asthma

[R] : Nephrotic syndrome [S] : Myasthenia gravis

Choose the correct statement about the use of corticosteroids for the treatment of these diseases.

- (A) P, Q and S are treated while R is NOT
(B) P, R and S are treated while Q is NOT
(C) Q, R and S are treated while P is NOT
(D) P, Q and R are treated while S is NOT

ANS: C

Q.26 Which one of the following statements is FALSE for fluoroquinolones?

- (A) These are highly effective by oral and parenteral routes
(B) These are relatively more susceptible to development of resistance
(C) These are effective against those bacteria that are resistant to p-lactam and aminoglycoside antibiotics
(D) These are bactericidal with broad spectrum of activity

ANS: B

Q.27 Increased serum levels of which one of the followings may be associated with decreased risk of atherosclerosis?

- (A) VLDL (B) LDL
- (C) HDL (D) Total Cholesterol

ANS: C (MAJOR TEST 6)

Q.28 Metformin causes the following actions EXCEPT for the one. Identify that.

- (A) Reduces hepatic neoglucogenesis
- (B) Increases glucose uptake in skeletal muscles
- (C) Enhances sensitivity to insulin
- (D) Increases HbA1c by 1% to 2%

ANS: D

Q.29 Misoprostol has a cytoprotective action on gastrointestinal mucosa because of one of the following actions. Identify that.

- (A) It enhances secretion of mucus and bicarbonate ion
- (B) It neutralizes hydrochloric acid in stomach
- (C) It antagonizes nonsteroidal anti-inflammatory drugs
- (D) It is bactericidal to *H. pylori*

ANS: A (MAJOR Test -5)

Q.30 Which of the following drugs can precipitate bronchial asthma?

[P] : Indomethacin [Q] : Codeine phosphate

[R] : Rabeprazole [S] : Theophylline

Choose the correct option.

- (A) P and R can do that (B) P and Q can do that
- (C) R and S can do that (D) S and Q can do that

ANS: B

Q.31 Which one of the following alkaloids is derived from Lysine?

- (A) Emetine (B) Chelidonine (C) Lobeline (D) Stachydrine

ANS: C

Q.32 Histologically the barks of *Cinnamomum cassia* and *Cinnamomum zeylanicum* differ in one of the following features. Identify that.

- (A) Sclerieds
- (B) Phloem Fibers
- (C) Pericyclic Fibres
- (D) Cortex

ANS: D (MINOR TEST -4)**Q.33 The following characteristic properties are given in context of saponins:**

[P] : Saponins give precipitate by shaking with water.

[Q] : Saponins are diterpenes and give foam on shaking with water.

[R] : Saponins are triterpenoidal compounds and cause haemolysis of erythrocytes.

[S] : They are steroidal or triterpenoidal compounds with tendency to reduce surface tension of water.

Choose the correct option.

- (A) P is true; Q is true; R is true; S is true
 (B) P is false; Q is true; R is false; S is true
 (C) P is false; Q is true; R is true; S is true
 (D) P is false; Q is false; R is true; S is true

ANS: D**Q.34 Read the given statements about the constituents of Shellac:**

[P] : Shellolic acid, a major component of alicyclic fraction is responsible for colour.

[Q] : Shellolic acid, a major component of aromatic fraction is responsible for colour.

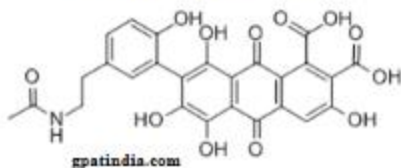
[R] : Shellolic acid is a major component of aliphatic fraction and laccaic acid is an component of aromatic fraction.

[S] : Aliphatic components are shellolic acid which is alicyclic and aleuratic acid which is acyclic, while laccaic acid is an aromatic colouring principle.

What is the correct combination of options?

- (A) P is true; Q is true; R is true; S is true
 (B) P is false; Q is false; R is false; S is true
 (C) P is false; Q is false; R is true; S is true
 (D) P is true; Q is false; R is false; S is true

Hint: Upon mild hydrolysis shellac gives a complex mix of aliphatic and alicyclic hydroxy acids and their polymers that varies in exact composition depending upon the source of the shellac and the season of collection. The major component of the aliphatic component is aleuritic acid, whereas the main alicyclic component is shellolic acid

**ANS: C**

Q.35 Major component of *Cymbopogon citratus* is citral which is utilized commercially for the followings:

[P] : Synthesis of Vitamin A directly from citral

[Q] : Synthesis of Vitamin A by first converting to T-ionone

[R] : Synthesis of Vitamin A by first converting to T-ionone followed by conversion to α -ionone which is very important intermediate for carotenoid synthesis

[S] : Synthesis of Vitamin A by first conversion of citral to T-ionone followed by conversion to P-ionone which is an important intermediate for carotenoid synthesis

Which is the correct combination of options?

- (A) P is true; Q is true; R is true; S is true
- (B) P is false; Q is true; R is false; S is true
- (C) P is false; Q is false; R is true; S is true
- (D) P is false; Q is false; R is false; S is false

ANS: B

Q.36 Which one of the following constituents is reported to have anti-hepatotoxic activity?

- (A) Podophyllotoxin (C) Linalool
- (B) Andrographoloid (D) Safranal

ANS: B

Q.37 Geranial and Neral are the monoterpene aldehyde constituents of volatile oil. Read the following statements about them:

[P] : Geranial and Neral are both optical isomers

[Q] : Geranial and Neral are both geometric isomers

[R] : Geranial has Z configuration and Neral has E configuration

[S] : Geranial has E configuration and Neral has Z configuration

(A) Choose the correct combination of answers for them.

- (B) P is false; Q is true; R is true; S is false
- (C) P is true; Q is false; R is true; S is true
- (D) P is false; Q is true; R is false; S is false

ANS: Not a single option is correct – correct answer is Q & S are correct , P & R are incorrect

Q.38 All of the followings applicable to Lignans are correct statements except for one. Identify the INCORRECT statement.

- (A) Lignans are formed by the dimerization of the phenylpropane moiety
- (B) Podophyllotoxin can be termed phytochemically as a lignan
- (C) Lignans can be formed by cyclization of phenylpropane nucleus
- (D) Lignans are the secondary metabolites formed from the Shikimic acid pathway

ANS: C

Q.39 Naringin, obtained from orange peel, can be named as one of the followings. Identify the correct name.

- (A) 5,4'-Dihydroxy-7-rhamnoglucoside of flavanone
- (B) 5,4'-Dihydroxy-7-glucoside of flavanone
- (C) 5,3',4'-Trihydroxy-7-rhamnoglucoside of flavone
- (D) 5,3',4'-Trihydroxy-7-glucoside of flavones

ANS: A

Q.40 Rhizomes of *Zingiber officinale* contain some sesquiterpene hydrocarbons. Some hydrocarbons are given below:

[P] : (3-Bisabolene) [Q]: Gingerone A [R] : Gingerol [S] : Zingiberene

Identify the correct pair of constituents present in the rhizomes.

- (A) P and S (B) P and Q (C) Q and S (D) Q and R

ANS: A

Q.41 Listed below are the chemical tests used to identify some groups of phytoconstituents. Identify the test for the detection of the purine alkaloids.

- (A) Keller-Killani Test (C) Shinoda Test
- (B) Murexide Test (D) Vitali-Morin Test

ANS: B

Q.42 Given below are four statements in context of Hecogenin:

[P] : It is a saponin

[Q] : It is useful for the semi-synthesis of steroidal drugs

[R] : It is not a glycoalkaloid

[S] : It is obtained from *Dioscorea* tubers

Choose the correct combination of statements.

- (A) P, Q and R are correct while S is incorrect
- (B) P, Q and S are correct while R is incorrect
- (C) Q, R are correct while P, S are incorrect
- (D) All are correct statements

ANS: A

Q.43 Atropine biosynthesis involves a pair of precursors. Identify the correct pair.

- (A) Ornithine and Phenylalanine
- (B) Tyrosine and Tryptophan
- (C) Tryptophan and Dopamine
- (D) Tyrosine and Dopamine

ANS: A

Q.44 Study the following statements:

[P] : Lutein and zeaxanthin are flavonoids

[Q]: Lutein and zeaxanthin are xanthophylls

[R] : Lutein and zeaxanthin are required to control age-related macular degeneration

[S] : Lutein is a flavonoid while zeaxanthin is its glycoside Choose the correct answer.

- (A) P is correct while Q, R and S are incorrect
- (B) Q and R are correct while P and S are incorrect
- (C) Statement P is the only correct statement
- (D) Statement S is the only correct statement

ANS: B

Q. 44 Choose the correct statement

[P] gpatindia.com provide information about gpat exam

[Q] gpatindia.com provide online test series for gpat preparation

[R] gpatindia.com is a informative web place for pharmacy professionals

- (A) P& S correct
- (B) Q and R are correct
- (C) P & R are correct
- (D) All are correct

ANS: D

Q.45 Listed below are some phytoconstituents.

[P] : Galactomannan [Q]: Glucomannan

[R] : Barbaloin [S] : Phyllanthin

Identify the constituent(s) present in Aloe vera.

- (A) OnlyP (B) Q and R (C) Only S (D) P and S

ANS: B

Q.46 Choose the correct answer for the binomial nomenclature of fruits of star-anise.

- (A) Pimpinella anisum (B) Illicium verum
- (C) Illicium anisatum (D) Illicium religiosum

ANS: B

Q.47 Given herewith are two statements:

[P] : Digitoxin is a secondary glycoside from Digitalis purpurea

[Q]: Digitoxin is a partially hydrolysed glycoside of Purpurea glycoside A

Determine the correctness of the above statements.

- (A) Both P and Q are true (B) P is true but Q is false
(C) Both P and Q are false (D) P is false but Q is true

ANS: A

Q.48 Peruvoside is naturally obtained from one of the following plants. Identify the correct name.

- (A) Dioscorea (B) Ginseng (C) Liquorice (D) Thevetia

ANS: D

Q.49 One of the followings is NOT required for the initiation and maintenance of plant tissue culture. Identify that.

- (A) Sucrose (B) Kinetin (C) Auxin (D) Abscic acid

ANS: D (MAJOR TEST 3)

Q.50 Study the relationship between the given two statements:

[P] : Capsanthin is a red coloured principle from Capsicum annum

[Q]: Capsanthin is a vanillylamide of isodecenoic acid Choose the correct answer.

- (A) Both P and Q are correct (B) Both P and Q are incorrect
(C) P is correct but Q is incorrect (D) P is incorrect but Q is correct

ANS: C

Q.51 For the equation $PV = nRT$ to hold true for a gas, all of the following conditions are necessary EXCEPT for ONE. Identify that.

- (A) The molecules of gas must be of negligible volume
(B) Collisions between molecules must be perfectly elastic
(C) The velocities of all molecules must be equal
(D) The gas must not be decomposing

ANS: C (MAJOR TEST 4)

Q.52 Atracurium besylate, a neuromuscular blocking agent, is metabolized through one of the following reactions. Identify that.

- (A) Hoffman elimination (B) Hoffman rearrangement
(C) Michael addition (D) Claisen condensation

ANS: A (MAJOR TEST)

Q.53 Identify the metabolite of prontosil responsible for its antibacterial activity.

- (A) Sulphacetamide (B) Sulphanilamide (C) p-Amino benzoic acid (D) Probenecid

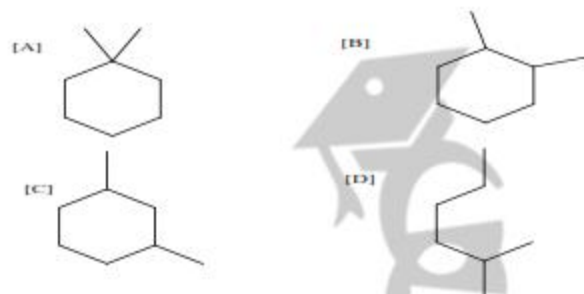
ANS: B

Q.54 The central bicyclic ring in penicillin is named as one of the followings. Find the correct name.

- (A) 1-Thia-4-azabicyclo[3.2.1]heptane (B) 4-Thia-1-azabicyclo[3.2.0]heptane
(C) 4-Thia-1-azabicyclo[3.2]heptane (D) 1-Thia-4-azabicyclo[1.2.3]heptanes

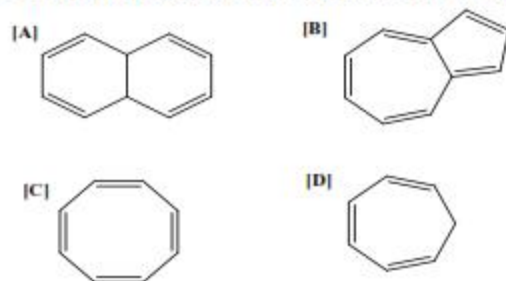
ANS: B (MINOR TEST- 11)

Q.55 Both of the CMR and PMR spectra of an unknown compound show four absorption peaks each. Identify the unknown compound.



ANS: B

Q.56 Out of the four given compounds choose the one which is aromatic?



ANS: B (MINOR TEST 16)

Q.57 Quantification of minute quantity of a drug from a complex matrix, without prior separation can be done using one of the following techniques. Identify that.

- (A) Coulometry (B) Potentiometry
(C) Fluorescence spectroscopy (D) Radioimmunoassay

ANS: D (Major test)

Q.58 Which one of the following fragmentation pathways involves a double bond and a γ -hydrogen in mass spectrometry?

- (A) α -Fission (B) β -Fission (C) Mc-Lafferty rearrangement (D) Retro-Diels Alder rearrangement

ANS: C (we ask que. Regarding the Mc-Lafferty rearrangement)

Q.59 Read the following statements carefully about non-aqueous titrations:

[P] : Acetate ion is the strongest base capable of existence in acetic acid.

[Q] : Mixtures of bases of different strengths can be analyzed by selecting a differentiating solvent for the bases.

[R] : Acetic acid acts as a leveling solvent for various acids like perchloric and hydrochloric acids.

[S] : Mixtures of bases of different strengths can be analyzed by selecting a leveling solvent for the bases.

Choose the correct answer.

- (A) P and Q are true and R and S are false
(B) P and S are true and R and Q are false
(C) R and Q are true and P and S are false
(D) R and S are true and P and Q are false

ANS: A

Q.60 Read the following statements carefully about Volhard's method:

[P] : In Volhard's titration, silver ions are titrated with thiocyanates in acidic solution

[Q] : Ferric ions act as indicator in Volhard's method, yielding reddish brown ferric thiocyanate

[R] : Volhard's method is used to determine halides

[S] : Volhard's method is a direct titration

Choose the correct set of answers.

- (A) P, Q and R are true and S is false
(B) Q, R and S are true and P is false
(C) R, S and P true and Q is false
(D) P, Q, R and S all are true

ANS: A

Q.61 Identify the group of enzymes that utilizes NADP or NAD as coenzymes and catalyzes biochemical reactions by the transfer of electrons from one molecule to another.

- (A) Isomerases
(B) Oxidoreductases
(C) Transferases
(D) Ligases
-

ANS: B

Q.62 Glucose is the only source of energy for one of the followings. Identify that.

- A) Cardiac cells (B) Nephrons (C) RBCs (D) Thrombocytes

ANS: C

Q.63 Determine the correctness or otherwise of the following Assertion [a] and Reason [r]:

Assertion [a] : Halogens are unusual in their effect on electrophilic aromatic substitution; they are deactivating yet ortho-, para - directing.

Reason [r] : In electrophilic aromatic substitution reactions, reactivity is controlled by stronger inductive effect while orientation is controlled by the stronger hyperconjugation effect.

Choose the correct statement.

- (A) [a] is true but [r] is false
 (B) Both [a] and [r] are true and [r] is the correct reason for [a]
 (C) Both [a] and [r] are false
 (D) Both [a] and [r] are true but [r] is NOT the correct reason for [a]

ANS: A (MAJOR TEST 3)

Q.64 Given are the four statements about dehydration of alcohols to give alkenes:

[P] : Ease of dehydration of alcohols takes place in the order $3^\circ > 2^\circ > 1^\circ$.

[Q]: Dehydration is acid catalyzed.

[R]: Orientation of the alkene formed is strongly Saytzeff.

[S] : Dehydration is irreversible.

Choose the correct combination of statements.

- (A) P and Q are correct while R and S are not
 (B) P, Q and R all three are correct but S is not
 (C) P, Q, R and S all are correct
 (D) P, Q and S all three are correct but R is not

ANS: B

Q.65 Choose the correct statement regarding the synthesis of phenyl isopropyl ether.

- (A) Phenyl isopropyl ether is prepared from isopropyl bromide and sodium phenoxide
 (B) Phenyl isopropyl ether is prepared from bromobenzene and sodium isopropoxide
 (C) Phenyl isopropyl ether can be prepared by either of the two methods
 (D) Both (A) and (B) are not the correct methods for the synthesis of phenyl isopropyl ether

ANS: A

Q.66 Read the following statements about S_N^A reactions:

[P] : They proceed with complete inversion (Walden inversion). [Q] : They proceed with racemization

plus some net inversion. [R] : They are characterized by rearrangements.

[S] : They are characterized by the reactivity sequence, $\text{CH}_3 > 1^\circ > 2^\circ > 3^\circ$ Choose the correct combination?

- (A) P and Q are true while R and S are false
- (B) P and R are true while S and Q are false
- (C) Q and R are true while P and S are false
- (D) R and S are true while P and Q are false

ANS: C (MINOR TEST- 16)

Q.67 Read the following statements carefully:

[P] : Pyrrole and thiophene undergo electrophilic aromatic substitution reactions much faster than benzene

[Q] : Pyrrole and thiophene undergo Diels Alder addition reaction very fast

[R] : Pyrrole and thiophene undergo nucleophilic aromatic substitution reaction faster than benzene

[S] : Pyrrole is a π excessive system while thiophene is a π deficient system
Choose the correct combination of statements.

- (A) Q only is true while P, R and S are false
- (B) R and S are true while P and Q are false
- (C) P and R are true while Q and S are false
- (D) P only is true while Q, R and S are false

ANS: D

Q.68 Among the followings which one is not only a non-reducing sugar but also does not exhibit mutarotation?

- (A) Glucose (B) Maltose (C) Lactose (D) Sucrose

ANS: D (MINOR TEST 1)

Q.69 Choose the most basic heterocyclic compound among the followings.

- (A) Pyridine (B) Imidazole (C) Pyrrole (D) Pyrrolidine

ANS: D (MINOR TEST-16)

Q.70 Followings are some drug derivatives used to increase/decrease the water solubility of the parent drugs:

[P] : Rolitetracycline

[Q] : Erythromycin lactobionate

[R] : Chloramphenicol succinate

[S] : Erythromycin stearate

Choose the correct combination of statements.

- (A) Q and R are used to increase water solubility while P and S are used to decrease it
 (B) P, Q and R are used to increase water solubility while S is used to decrease it
 (C) Q, S and R are used to increase water solubility while P is used to decrease it
 (D) Q and S are used to increase water solubility while P and R are used to decrease it

ANS: B

Q.71. Study the following statements on prevention of crystalluria. By the given approaches crystalluria can be prevented-

- [P] : By co-administration of sulfadiazine, sulfamerazine and sulfamethazine
 [Q] : By increasing the pH of urine
 [R] : By co-administration of sulphanilamide, sulphamethoxazole and folic acid
 [S] : By administration of co-trimoxazole
 Choose the correct combination of statements.
 (A) P and Q are correct (B) R and S are correct
 (C) P and R are correct (D) Q and R are correct

ANS: Only Q is correct, P, R, S are incorrect (we asked in our question about side effect of sulphonamide)

Q.72 Progesterone is obtained from diosgenin through the following sequence of chemical reactions:

- [P] : Acetylation, CrO₃ (oxidation), Acetolysis, H₂/Pd, Hydrolysis and Oppenauer oxidation
 [Q] : Oppenauer oxidation, Acetylation, CrO₃ (oxidation), Acetolysis, H₂/Pd and Hydrolysis
 [R] : CrO₃ (oxidation), Acetolysis, Acetylation, Oppenauer oxidation, Hydrolysis and H₂/Pd
 [S] : Acetylation, H₂/Pd, Hydrolysis, CrO₃ (oxidation), Oppenauer oxidation and Acetolysis
 Choose the correct sequence of reactions.
 (A) P (B) Q (C) R (D) S

ANS: A

Q. 73 Following statements are given for local anaesthetic drug lidocaine: [P] : It contains a xylylidine moiety -gpaindia.com.

[Q] : It can be used as antiarrhythmic agent on oral administration.

- [R] : When administered along with adrenaline its toxicity is reduced and its effect is prolonged.
 [S] : Chemically it is 2-diethylamino-2',6'-dimethylphenyl acetamide Choose the correct combination of statements.
 (A) P, Q and S (B) P, Q and R (C) P, R and S (D) Q, R and S

ANS: C (MINOR 6)

Announcing

GPAT-2013 – Online Test Series Programme Run by Pharmacophore Solutions (GPATINDIA.COM)

• **Total 40 (22 –Minor, 5-Mini Major , 2 Semi Major& 11 – Major)Test will be conducted till GPAT-2013**

- NOTE:-YOU ARE FREE TO JOIN THE TEST SERIES TILL (Till April 2013 last week) GPAT-2013, ANY TIME WHEN YOU COME TO KNOW ABOUT IT, THROUGH ANY SOURCE.
- Time –For Each Minor Test – 90 min.(1.5 Hr)
- Time –For Each Semi Major –150 min (2.5 Hr)
- Time –For Major- 180 min (3 Hr)
- Total Question in Each Minor Test- 60
- Total Question in Each Semi Major Test-100
- Total Question in Each MINI Major Test-100
- Total Question in Each Major Test-150
- Test Place: Any Cyber Cafe, Your College/Institute Net, Internet Facility is Necessary
- Day & Timing of Test: Any Time , Any Day – Till GPAT-2013
- Negative Marking System: Same as GPAT-2012 (1/3 marks deduction on every wrong answer)
- You can avail these papers every time, everywhere, there is no schedule. You can make your own schedule.
- Result : Result of your test will be display after completion of your every test (Within 1 sec.)

Q. 74 One of the following ring systems can be used as the bioisosteric replacement for benzene ring in drug design:

[P]: Thiophene [Q]: Cyclohexa-1,3-diene [R]: Pyrrolidine [S] : Imidazoline

Identify the correct answer.

(A) P (B) Q (C) R (D) S

ANS: A

Q.75 Some of the following statements describe the properties of Dropping Mercury Electrode (DME) correctly:

- [P] Constant renewal of electrode surface eliminates poisoning effects.
 [Q] Mercury makes many metal ions easily reducible.
 [R] Mercury has large hydrogen over-voltage.
 [S] The electrode can get oxidised with ease.

Identify the correct combination.

- (A) All statements P, Q, R and S are correct
 (B) Statements P, Q and R only are correct
 (C) Statements P, R and S only are correct
 (D) Statements P, Q and S only are correct

ANS: A

Procedure to Join Test Series 2013

or

b. Direct Online Transaction Through Internet Banking in our Account. Our account details are as follows:

Bank Name: Punjab National Bank at Jalpur
Branch IFSC No: PUNB0395300
Name of the Account holder: Pharmacophore Solutions
Account Type: Current
Account Number: 3953002100013904

Or

c. Direct transfer of required amount through ATM by your PNB ATM cum Debit card in our account (Send us your transfer slip along with Registration form)

or

d. Direct deposition of required amount in our account through PNB bank (Send us bank deposition slip with seal & signature of bank employee)

Important Note: After Deposition of required amount call us & send us the detail of online transaction on our address with Your Detail (Which you filled in **Registration form** along with Photograph) . Also send the transaction detail on our Mail id- exam@gpatindia.com on same day of transaction.

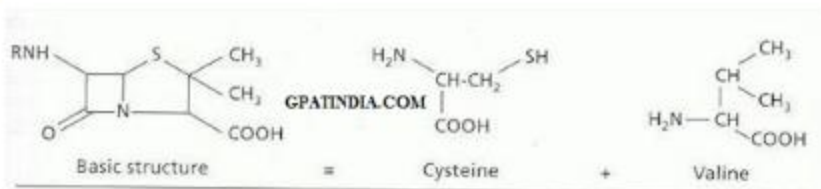
Q.76 Penicillin ring system is derived from two of the following amino acids:

[P] : Alanine and methionine [Q] : Cysteine and valine [R] : Glycine and cysteine [S] : Methionine and leucine

Choose the correct pair.

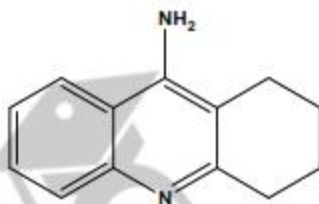
(A) P (B) Q (C) R (D) S

ANS: B



HINT:

Q.77 For the management of which disease the given drug tacrine is used? Identify.



- (A) Glaucoma
- (B) Antidote for aticholinesterase poisoning
- (C) As an insecticide
- (D) Alzheimers disease

ANS: D (SEMI MAJOR 1)

Q.78 Low dose aspirin acts as anti-platelet aggregating agent by which one of the following mechanisms? Find the correct answer.

- (A) It acts as a suicide substrate for COX-1 enzyme present in platelets
- (B) It acts as a transition state analog for COX-2 enzyme present in the platelets
- (C) It acts as a reversible inhibitor of lipoxigenase present in the platelets
- (D) It acts as an affinity label of oxidoreductases present in the platelets

ANS: A

Q.79 Some statements are given for clavulanic acid, sulbactam and tazobactam:

[P] : All three lack the 6-acylamino side chain

[Q]: All are potent inhibitors of the enzyme P-lactamase

[R] : All are prodrugs of penicillin

[S] : All have weak antibacterial activity

Choose the correct combination of statements.

- (A) P, Q and R are true while S is false

- (B) Q, R and S are true while P is false
 (C) P, R and S are true while Q is false
 (D) P, Q and S are true while R is false

ANS: D

Q.80 Electrophilic aromatic substitution reactions in indole give one of the following products preferably. Identify that.

- (A) 3-Substituted indole (B) 2-Substituted indole
 (C) 5-Substituted indole (D) 6-Substituted indole

ANS: A

Q.81 Which one of the following species is an intermediate in the reaction shown below?



- (A) $\text{CH}_3\text{CH}_2\text{CHO}^+$ (B) $\text{CH}_3\text{CH}_2\text{CHO}^-$
 (C) $\text{CH}_3\text{CH}^+\text{CHO}$ (D) $\text{CH}_3\text{CH}^-\text{CHO}$

ANS: D (MINOR TEST- 16)

Q.82 Which detector is used in gas chromatography for halogen containing compounds specifically?

- (A) Katharometer
 (B) Electron capture detector
 (C) Flame ionization detector
 (D) Thermal conductivity detector

ANS: B

Q.83 Precessional frequency of a nucleus depends on the followings:

- [P] : Quantum of externally applied magnetic field
 [Q] : Quantum of electron density present around the nucleus
 [R] : Frequency of applied electromagnetic radiations
 [S] : Electronegativity of the element

Choose the correct combination of statements.

- (A) P & Q are true (B) P & R are true
 (C) Q & R are true (D) P & S are true

ANS: A

Q.84 Some statements are given about disodium edetate:

[P] : Disodium edetate is a bidentate ligand

[Q] : Disodium edetate is a complexing agent but not a chelating agent

[R] : Disodium edetate can be used for the assay of lithium carbonate

[S] : Disodium edetate can be used for the assay of zinc sulphate

Choose the correct answer.

- (A) Q, R & S are true (B) Q & S are true
 (C) S only is true (D) P, Q, R & S all are true

ANS: C**Q.85 Which one of the following amino acids is the most effective contributor of protein buffer?**

- (A) Alanine (B) Glycine (C) Histidine (D) Arginine

ANS: C**Q.86 Given are some statements about cycloalkanes:**

[P] : Bayer's theory does not apply to four membered rings.

[Q] : Cyclohexane and cyclodecane rings are not flat but are puckered.

[R] : Chair form of cyclohexane experiences van der Waals strain due to flagpole interactions.

[S] : Boat form of cyclohexane experiences both torsional and van der Waals strain. Choose the correct combination of statements.

- (A) P, Q & R are true and S is false (B) Q & S are true and P & R are false
 (C) P, Q & S are true and R is false (D) Q, R & S are true and P is false

ANS: B**Q.87 Phenols are more acidic than alcohols. This is due to one the following reasons. Identify that.**

- (A) Alkoxide ions are better stabilized by the electron releasing alkyl groups
 (B) Resonance stabilizes both phenols and phenoxide ions to the same extent
 (C) Phenols are better stabilized than the phenoxide ions while reverse is true for alcohols and alkoxides
 (D) Phenoxide ions are much better stabilized than the alkoxide ions

ANS: D**Q.88 Study the following statements on alkylating agents as antineoplastic:**

[P] : They get converted to aziridinium ions and bind to 7th position -N atom of guanine of DNA base pairs

[Q] : Nitrogen mustards and Sulfur mustards belong to this class of drugs

[R] : They inhibit dihydrofolate reductase enzyme thereby inhibiting DNA synthesis

[S] : They chelate electropositive atoms present in the DNA thereby inhibiting DNA uncoiling

Choose the correct combination of statements.

- (A) P and Q are correct (B) R and S are correct
(C) P and S are correct (D) Q and R are correct

ANS: A

Q.89 Study the following statements about the stereochemistry of steroidal aglycones in cardiac glycosides:

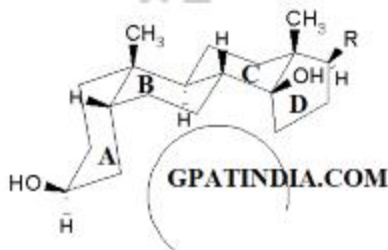
- [P] : Rings A-B and C-D are cis fused while B-C is trans fused.
[Q] : Rings A-B and C-D are trans fused while B-C is cis fused.
[R] : Rings A-B are trans fused while B-C and C-D are cis fused.
[S] : Rings A-B are cis fused while B-C and C-D are trans fused.

Choose the correct statement.

- (A) P is true while Q, R and S are false
(B) Q is true while P, R and S are false
(C) R is true while P, Q and S are false
(D) S is true while P, R and Q are false

ANS: A –

HINT



Q.90 Following are some statements about Captopril:

- [P] : It is a prototype molecule in the design of ACE inhibitors
[Q] : It contains a sulphonyl group in its structure
[R] : It has a proline moiety in its structure
[S] : It has an ester linkage

Choose the correct combination of statements.

- (A) P & Q are true while R & S are false
(B) Q & R are true while P & S are false
(C) P & R are true while Q & S are false
(D) R & S are true while P & Q are false

ANS: C (MAJOR TEST- 5- two option match)

Q.91 Cetirizine as an antihistaminic agent has a low sedative potential due to one of the following reasons. Identify that.

- (A) It has a chiral center (B) It has high log P value
(C) It has high polarity (D) It has low molecular weight

ANS: C

HINT: Relationship between logP and permeation is however non-linear, permeation decreasing in both low and high end of logP values, and often a logP value of 3 is considered as a upper limit of desired lipophilicity

THIS COMPOUND HAS LOW log p VALUE =2.98

High lipophyllc compound can enter brain cause sedation

Its polarizability= 41.88

Q.92 There are some criteria which an ideal antacid should fulfill. Some of the criteria are given below:

- [P] : The antacid should be absorbable orally and should buffer in the pH range of 4 - 6
[Q]: The antacid should exert its effect rapidly and should not cause a large evolution of gas
[R] : The antacid should not be a laxative or should not cause constipation
[S] : The antacid should react with the gastric acid and should inhibit pepsin

Choose the correct combination of criteria for an ideal antacid.

- (A) P, Q&R (B) Q, R&S (C) Q&R (D) R & S

Ans: C

Q.93 Titanium dioxide is used in sun screen products as a topical protective. The topical protective effect of titanium dioxide is arising due to one of the following properties. Identify that.

- (A) It has a high bulk density (B) It has a high LTV absorptivity
(C) It has a low water solubility (D) It has a high refractive index

ANS: D

Q.94 Deferoxamine is used for the treatment of toxicity caused by one of the following ions. Identify that.

- (A) Arsenic (B) Cyanide (C) Iron (D) Lead

ANS: C

Q.95 Parachor and Molar refraction can be categorized under one of the following properties. Identify that.

- (A) Additive properties (B) Constitutive properties
(C) Colligative properties (D) Additive and constitutive property

ANS: D

Q.96 Rast's camphor method is used for determination of molecular weight of solutes which are soluble in molten camphor. The basic principle of the method is dependent on one of the following properties. Identify that.

- (A) Elevation of freezing point of camphor by the solute
- (B) Lowering of vapour pressure of camphor by the solute
- (C) Lowering of freezing point of camphor by the solute
- (D) Elevation of boiling point of camphor by the solute

ANS: C

Q.97 In polarography, when the limiting current is achieved, one of the following processes takes place. Choose that.

- (A) The rate of electron transfer just matches the rate of mass transfer
- (B) The rate of electron transfer is slower than the rate of mass transfer
- (C) The rate of electron transfer becomes independent of the rate of mass transfer
- (D) The rate of electron transfer far exceeds the rate of mass transfer

ANS: D

Q.98 Starch-iodide paste/paper is used as an external indicator in one of the following titrations. Identify that.

- (A) Iodometric titration of copper sulphate using sodium thiosulphate as titrant
- (B) Iodimetric titration of ascorbic acid using iodine solution as titrant
- (C) Diazotisation titration of sulphadiazine using sodium nitrite as titrant
- (D) Potassium dichromate titration using sodium thiosulphate as titrant

ANS: C

Q.99 For a dye to be used as metal indicator in complexometric titrations, some of the dye properties are listed below:

- [P] : The dye should have distinct colour than the dye-metal complex
- [Q] : The dye-metal complex should have a higher stability than the metal-chelate (titrant) complex
- [R] : The dye should be capable of complexing with the metal ions

Choose the correct combination of statements for the dye to be used as an indicator in complexometric titrations.

- (A) P & Q are correct while R is not
- (B) Q & R are correct while P is not
- (C) P & R are correct while Q is not
- (D) P, Q & R all are correct

ANS: C

Q.100 In amperometry, rotating platinum electrode (RPE) is used as indicating electrode. It has certain advantages as well as disadvantages. Read the following statements about the use of rotating platinum electrode in amperometry:

[P] : It causes large diffusion current due to rotation resulting in greater mass transfer

[Q] : It causes greatly reduced residual current due to lack of condenser effect

[R] : It has a low hydrogen over potential

Choose the correct combination of statements.

- (A) P, Q & R are all advantages of using RPE in amperometry
- (B) P & R are advantages of RPE while Q is a disadvantage
- (C) Q & R are advantages of RPE while P is a disadvantage
- (D) P & Q are advantages of RPE while R is a disadvantage

ANS: D

Q.101 What will be the approximate T_{max} of a drug exhibiting K_a of 2 hr^{-1} and K of 0.2 hr^{-1} ?

- (A) 1.2 hr (B) 2.4 hr (C) 4.8 hr (D) 2.0 hr ,

ANS: A

HINT: exact answer is 1.279 so most suitable answer is A

formula $T_{max} = 2.303 \log(K_a/K_e) / K_a - K_e$

Q.102 There are some statements related to the protein binding of drugs as given below:

[P] : Protein binding decreases the free drug concentration in the system.

[Q]: Protein binding to plasma albumin is an irreversible process.

[R] : Drugs with a low lipophilicity have a high degree of protein binding.

[S] : Protein binding of one drug can be affected by the presence of other drug.

Choose the correct combination of statements.

- (A) P & Q are true while R & S are false
- (B) Q & R are true while P & S are false
- (C) R & S are true while P & Q are false
- (D) P & S are true while Q & R are false

Ans: D

Q.103 Based on Henderson-Hasselbalch equation, at what pH value a weak acid would be 99.9% ionized?

- (A) At pH equivalent to $pK_a + 3$ (B) At pH equivalent to $pK_a - 3$
 (C) At pH equivalent to $pK_a - 1$ (D) At pH equivalent to $pK_a + 1$

ANS: A

Q.104 Some statements about crystals are given below:

[P] : The crystal lattice is constructed from repeating units called unit cells.

[Q]: The external appearance of a crystal is described by crystal habits, such as needles, prisms, rosettes etc.

[R] : Polymorphism is the ability of a compound to crystallize as more than one distinct crystalline species with different internal lattice.

[S] : Hydrates are always more soluble than anhydrous form of the same drug Choose the corrected combination of statements about crystals.

- (A) Statement P, Q and S are correct but R is wrong
- (B) Statement P, Q and R are correct but S is wrong
- (C) Statement Q, R and S are correct but P is wrong
- (D) Statement R, S and P are correct but Q is wrong

ANS:B

Q.105 Which one of the followings is NOT used in preparation of baby powders?

- (A) Stearic acid (B) Boric acid (C) Kaolin (D) Calcium carbonate

ANS- B

Q.106 According to Kozeny Carmen equation a 10% change in porosity can produce:

- (A) Two fold change in viscosity (B) Five fold change in viscosity
- (C) Three fold change in viscosity (D) None of the above

ANS-C

Q.107 Speed disk atomizer rotates at a speed of:

- (A) 3000 - 5000 revolutions per min
- (B) 3000 - 50000 revolutions per min
- (C) 300 - 50000 revolutions per min
- (D) 300 - 5000 revolutions per min

Ans: B

Q.108 The Gold coating on a USP Dissolution apparatus - I basket should be:

- (A) Not more than 2.5 in thickness
- (B) Not more than 0.001 mm in thickness
- (C) Not more than 0.025 p. in thickness
- (D) Not more than 0.1 mm in thickness

ANS: A

Q.109 Containers used for aerosols should withstand a pressure of:

- (A) 130-150 Psig at 130 °F (B) 140-180 Psig at 130 °F
- (C) 140-170 Psig at 120 °F (D) 120-140 Psig at 120 °F

ANS: B

Q.110 Study the following two statements:

[X] : If the gas is cooled below its critical temperature, less pressure is required to liquefy it.

[Y] : At critical temperature and critical pressure, the liquid will have highest vapor pressure.

Choose the correct combination of statements.

- (A) Both X and Y are correct
- (B) X is incorrect and Y is correct
- (C) X is correct and Y is incorrect
- (D) Both X and Y are incorrect

ANS: A

Q.111 Determine the correctness or otherwise of the following Assertion [a] and the Reason [r]:

Assertion [a]: For an API of approximately same particle size, the angle of repose will increase with departure from spherical shape.

Reason[r] : Angle of repose is a function of surface roughness and particle size. With constant particle size, increase in roughness increases angle of repose.

- (A) Although [a] is true but [r] is false
- (B) Both [a] and [r] are false
- (C) Both [a] and [r] are true and [r] is the correct reason for [a]
- (D) Both [a] and [r] are true but [r] is NOT the correct reason for [a]

ANS: C

Q.112 Study the following two statements:

[X] : When used as granulating agent PEG 6000 improves dissolution rate of the dosage form as it forms a complex with a better solubility.

[Y] : Sodium CMC when used as a binder affects dissolution rate of the dosage form as it is converted to less soluble acid form at low pH of the gastric fluid.

Choose the correct answer.

- (A) Both X and Y are correct
- (B) X is incorrect and Y is correct
- (C) X is correct and Y is incorrect
- (D) Both X and Y are incorrect .

ANS: B (REMINGTON PAGE-677)

Q.113 Study the following statements about Gram staining:

[P]: Gram positive bacteria are stained deep violet and Gram negative bacteria are stained red.

[Q]: Gram positive bacteria are stained red and Gram negative bacteria are stained deep violet.

[R]: The sequence of addition of staining reagents is crystal violet, iodine solution, alcohol and safranin.

[S] : In Gram positive bacteria the purple color developed during staining is lost during alcohol treatment. The cells later take up the safranin and stain red.

Choose the correct combination of statements.

- (A) P, Q, R & S all are false (B) P & Q are false and R & S are true
(C) P & S are false and Q & R are true (D) P & R are false and Q & S are true

Ans: P & R is correct Q & S is wrong

No option is matched

Q.114 Choose the correct formula for the calculation of the retail price of a formulation, given by the Govt, of India.

- (A) $R.P. = (M.C. + E.D. + P.M. + P.C.) \times (1 + MAPE/100) + C.C.$
(B) $R.P. = (M.C. + C.C. + P.M. + P.C.) \times (1 + MAPE/100) + E.D.$
(C) $R.P. = (M.C. + C.C. + E.D. + P.C.) \times (1 + MAPE/100) + P.M.$
(D) $R.P. = (M.C. + C.C. + P.M. + E.D.) \times (1 + MAPE/100) + P.C.$

ANS: B (MINOR TEST 17)

Q. 115 Determine the correctness or otherwise of the following Assertion [a] and the Reason [r]:

Assertion [a] : In arsenic poisoning, dimercaprol, injected intramuscularly, acts as antidote by metal complexation.

Reason [r] : EDTA acts as an antidote in lead poisoning, by solubilizing the toxic metal ions from the tissues.

- (A) Although [a] is true but [r] is false
(B) Both [a] and [r] are false
(C) Both [a] and [r] are true and [r] is the correct reason for [a]
(D) Both [a] and [r] are true but [r] is NOT the correct reason for [a]

ANS: D

Q.116 Determine the correctness or otherwise of the following Assertion [a] and the Reasons [r & s]:

Assertion [a] : Butylated hydroxytoluene is added as one of the ingredients in the lipstick formulation.

Reason [r] : It is a good solvent for the wax - oil mixtures and coloring pigments present in the lipstick.

Reason [s] : It is an antioxidant and prevents rancidity on storage.

- (A) [a] is true, and [r] and [s] are true and correct reasons for [a]
(B) [a], [r] and [s] are all false
(C) [a] is true, [s] is false, and [r] is the correct reason for [a]
(D) [a] is true, [r] is false, and [s] is the correct reason for [a]

ANS: D

Q.117 Which one of the following statements is FALSE about Interferons?

- (A) Interferons are cellular glycoproteins produced by virus infected cell
(B) Interferons have no effects on extracellular virus

- (C) Interferons are virus specific agents that can interfere either with DNA or RNA virus
(D) They are produced as potent broad spectrum antiviral agents

ANS: C

Q.118 In relation to sodium chloride and water mixture, read the following statements:

- [P] : Mixture is eutectic in nature
[Q]: It has eutectic point -21.2°C
[R]: The composition of eutectic is 25.3% by Mass
[S] : The mixture is a true eutectoid and may exist as peritectic also.
Which of the set of statements is correct?

- (A) P&Q (B) Q, R&S (C) P, Q&S (D), P, R & S

ANS : A

Q.119 In relation to sterilization, what is the meaning of D300F - 2 minutes?

- (A) Death of all microorganisms in 2 minutes
(B) Death of 300 microorganism in 2 minutes
(C) Death of all microorganism in 2 minutes at 300°F
(D) Death of 90% microorganism in 2 minutes at 300°F

ANS: D

Q.120 Choose the correct combination:

- | | |
|-----------------------|---------------------|
| i Rod mill | p Dried plant drug |
| ii Hammer mill | q Thermolabile drug |
| iii Fluid energy mill | r Paint |

- (A) i & q, ii & p, iii & r (B) i&r, ii&p, iii & q
(C) i & q, ii & r, iii & p (D) i&p, ii&q, iii & r

ANS B

Q.121 Which one of the following statements is NOT true for stainless steel 316?

- (A) It is also called inox steel
(B) It contains 10.5 - 11% chromium
(C) Due to the presence of chromium it exhibits passivation phenomenon
(D) It is not affected by acids

ANS : D

Q.122 Precise control of flow is obtained by which one of the followings?

- (A) Needle valve (B) Butterfly valve (C) Gate valve (D) Globe valve

ANS: A

Q.123 Heat sensitive materials like fruit juice are evaporated in which one of the followings?

- (A) Long tube vertical evaporator
- (B) Calandria type evaporator
- (C) Falling film type evaporator
- (D) Forced circulation type evaporator

ANS: C (MINOR TEST 9)

Q. 124 Which of the following conditions favor formation of large crystals?

- (A) High degree of supersaturation
- (B) Low nucleation rate
- (C) High magma density
- (D) Rapid cooling of magma

ANS: B

Q.125 If M, L, T, Q and Φ are dimensional representations of mass, length, time, heat and temperature respectively, then what is the dimension of fluid thermal conductivity?

- (A) $Q/MT\Phi$
- (B) $Q/TL^2\Phi$
- (C) $Q/TL\Phi$
- (D) M/LT

ANS: D

Q.126 Which one of the following properties is characteristic of microemulsions?

- (A) These are transparent systems with droplet size less than 1 MICRO METER
- (B) These are transparent systems with droplet size less than 10 MICRO METER
- (C) These are non-transparent systems with droplet size less than 1 MICRO METER
- (D) These are transparent systems with droplet size less than MICRO METER

ANS:A (major test)

Q.127 Which one of the followings would be an offence in accordance with the provisions of the Drugs and Cosmetics Act, 1940?

- (A) Packing of Paediatric oral drops in 30 ml pack
- (B) Packing of Oxytocin injection in a single unit blister pack
- (C). Packing of Schedule X drugs in 5 ml injection pack
- (D) Packing of Aspirin tablets (75 mg) in 14 tablet strip pack

ANS: A

Q.128 Which one of the following colours is NOT permitted to be used in drugs by the Drugs and Cosmetics Act, 1940?

- (A) Chlorophyll
- (B) Riboflavin
- (C) Tartrazine
- (D) Amaranth

ANS: D

www.gpatindia.com

Q.129 At equal concentrations which one of the following mucilages will possess maximum viscosity?

- (A) Maize starch (B) Rice starch (C) Wheat starch (D) Potato starch

ANS: D

Q.130 By which mechanism the microorganisms are killed by autoclaving?

- (A) Coagulation of the cellular proteins of the microorganisms
(B) Alkylation of essential cellular metabolites of microorganisms
(C) Stopping reproduction of microorganism cells as a result of lethal mutations
(D) Oxidation of RNA of microorganisms

ANS: A (MINOR TEST-5)

Q.131 Manufacture and sale of some of the following drugs is prohibited in India:

[P] : Fixed dose combination of atropine and antidiarrhoeals

[Q]: Penicillin eye ointment

[R]: Nimesulide paediatric drops

[S] : Gatifloxacin tablets

Choose the drugs which are prohibited?

- (A) P, Q&R (B) Q, S&R
(C) R, S&P (D) P, Q, R & S

ANS: D

Q.132 Following are the phases of clinical trials:

[P] : Human pharmacology

[Q]: Therapeutic confirmatory trials

[R] : Post marketing trials

[S] : Therapeutic exploratory trials

Choose the correct order of phases of clinical trial.

- (A) P, Q, R, S (B) P,R, Q, S (C) P,Q,S,R (D) P, S, Q, R

ANS: D

Q.133 The integrity of seals in case of vials and bottles is determined by some tests. Some of them are given below:

[P]: Leaker's test

[Q]: Water hammer test

[R]: Spark tester probe

Choose the correct answer.

- (A) P & Q (B) Q&R (C) P&R (D) P, Q & R all

ANS: D

Q.134 Study the following four statements:

- [P] : Gram negative bacteria produce potent pyrogenic substances called endotoxins
 [Q]: Ethylene oxide mixed with carbon dioxide or fluorinated hydrocarbons is used in gas sterilization
 [R]: D value is the time (for heat or chemical exposure) or the dose (for radiation exposure) required for the microbial population to decline by one logarithmic unit
 [S] : Spores of *Geobacillus stearothermophilus* (*Bacillus stearothermophilus*) are used for sterility testing of moist heat sterilization process

Choose the correct answer.

- (A) P, Q & R are correct but S is incorrect
 (B) Q, R & S are correct but P is incorrect
 (C) R, S & P are correct but Q is incorrect
 (D) P, Q, R & S all are correct

ANS: D (MAJOR 3 & 6) (TWO OPTION MATCH WITH OUR QUE.)

Q.135 Read the following statements:

- [P] : The surface area measurement using BET approach utilizes argon gas for adsorption
 [Q]: Full form of BET is Brunauer, Emmett and Teller

Choose the correct answer.

- (A) P & Q both are correct
 (B) P is correct but Q is incorrect
 (C) Q is correct but P is incorrect
 (D) Both P & Q are incorrect

ANS- C

Q. 136 Based on the DLVO theory of force of interaction between colloidal particles, which one of the followings lead to attractive interaction between two particles?

- (A) Solvation forces (b). Electrostatic forces
 (C) van der Waals forces (B) Steric forces

ANS –C (MINOR TEST)

Q.137 Read the following statements with regard to viscosity of a polymer solution:

- [P] : Specific viscosity of a polymer solution is obtained as relative viscosity + 1
 [Q]: Relative viscosity is the ratio of the viscosity of the solution to the viscosity of pure solvent
 [R]: Kinematic viscosity is defined as the viscosity of the liquid at a definite temperature
 [S] : The unit for kinematic viscosity is poise or dyne sec cm⁻² Indicate the correct combination of statements.

- (A) P & S are correct but Q&R are wrong
 (B) Q & R are correct but P & S are wrong

- (C) P & Q are correct but R & S are wrong
 (D) R & S are correct but P & Q are wrong

ANS:B

Q.138 Determine the correctness or otherwise of the following Assertion [a] and the Reason [r]

Assertion [a] : Salts having no ions in common with the slightly soluble electrolyte increase its solubility

Reason [r] : Such salts lower the activity coefficient of the slightly soluble electrolyte

- (A) Both [a] and [r] are true and [r] is the correct reason for [a]
 (B) Both [a] and [r] are false
 (C) Although [a] is true but [r] is false
 (D) Both [a] and [r] are true but [r] is NOT the correct reason for [a]

ANS: A

Q.139 What negative adsorption would do?

- (A) Decrease the surface free energy as well as the surface tension
 (B) Increase the surface free energy as well as the surface tension
 (C) Decrease the surface free energy but increase the surface tension
 (D) Increase the surface free energy but decrease the surface tension

ANS- B

Q.140 Read the following statements:

[P] : At temperature below Kraft point, micelles will, not form

[Q]: At Kraft point, solubility of surfactant equals CMC

[R] : Kraft point increases with increasing chain length of hydrocarbon

[S] : Kraft point is normally exhibited by non-ionic surfactants

Choose the correct combination of answers.

- (A) P is correct but Q, R & S are wrong
 (B) R & S are correct but P & Q are wrong
 (C) P, Q & R are correct but S is wrong
 (D) P & R are correct but Q & S are wrong

ANS -C

Q.141 Two statements are given regarding the uniformity of dispersion test (LP.):

[P] : It is evaluated using 6 tablets and 500 mL water

[Q]: It involves measuring the dispersion time of each tablet

Choose the correct set of statements.

- (A) P is correct while Q is incorrect
 (B) P & Q both are correct

- (C) P is incorrect while Q is correct
(p) Both P & Q are incorrect

ANS- D

Q.142 Read the following statements:

- [P] : Caramelization occurs in acidic conditions
[Q]: Caramel is optically inactive glucose
[R] : Caramel is obtained by burning of glucose
[S] : Caramel is obtained by degradation of fructose
Choose the right combination of statements.

- (A) P & Q are true but R & S are false
(B) P & S are true but Q & R are false
(C) Q & R are true but P & S are false
(D) R & S are true but P & Q are false

ANS: B

Q.143 Read the following statements regarding value added tax (VAT):

- [P] : It is an indirect tax
[Q]: It is charged at the rate of 8%
[R] : It is tax at source
[S] : It is effective since April 2010

Choose the correct option.

- (A) P & Q are true R & S are false
(B) R & S are true P & Q are false
(C) P & R are true Q & S are false
(D) Q & S are true P & R are false

ANS:C

Q.144 Find the process by which the conversion of sulfasalazine to sulfapyridine and 5-amino salicylic acid takes place in the colon?

- (A) Hydrolysis (B) Deamination (C) Acetylation (D) Azoreduction

ANS: D

Q.145 How much quantity (in grams) of sodium chloride is needed to make 30 ml of a 2% isotonic drug (sodium chloride equivalent 0.20) solution?

- (A) 0.60 (C) 0.15 (B) 0.27 (D) 0.12

ANS: C

Q.146 Read the following statements about lyophilization:

[P] : Lyophilization cannot be done in final containers like multiple dose containers.

[Q]: Lyophilized product needs special methods for reconstitution.

[R] : Lyophilization causes protein denaturation in tissues.

[S] : Lyophilization is suitable for drying the thermolabile products.

Choose the correct combination of statements.

- (A) P is true and Q, R & S are false (B) Q is true and P, R & S are false
(C) R is true and P, Q & S are false (D) S is true and P, Q & R are false

ANS:D

Q.147 In a pharmacokinetic model depicted in the following scheme, what is the half-life of the drug if the apparent volume of distribution of the drug is 25 L?



- (A) 1.7 hr (B) 2hr (C) 4 hr (D) 3 hr

ANS:C

Q.148 A sample of paracetamol tablets claims to contain 500 mg of paracetamol. But, on analysis by Govt. Analyst, it was found to contain 200 mg. As per Drugs and Cosmetics Act, 1940, this product would be categorized as what?

- (A) Misbranded drug (B) Adulterated drug
(C) Spurious drug (D) Unethical drug

ANS: A

Q.149 Use of which of the following artificial sweeteners is permitted in various dosage forms of Ayurveda, Siddha and Unani proprietary medicines?

- (A) Sucralose (B) Aspartame (C) Saccharin (D) All of them

ANS: D

HINT

Dosage forms	Maximum permissible limits of artificial sweeteners mg. per kg of product.		
	Sucralose mg/kg	Aspartame mg/kg	Saccharin sodium mg/kg
Solids Churna, Granule, tablets, vati, gutika	400	1000	200
Semi-Solids Avleha, paste, etc.	750	200	500
Liquid Syrups	1500	3000	300

www.GPATINDIA.COM

Q.150 What will be the maintenance dose of a sustained release 12 hour formulation of drug X exhibiting one compartment kinetics with a half-life of 6 hours, plasma concentration (steady state) 6 ug/ml, volume of distribution 30 L, and an oral bioavailability of 80%?

(A) 249.48 mg (B) 225.48 mg (C) 311.85 mg (D) 281.85 mg

ANS: C

Best of luck to all students

Cut off marks will be around 15 to 18 % marks

Paper is full of Assertion Resigning + TRUE & FALSE pattern.

THIS PAPER AGAIN SET THE NEW BENCHMARK IN THE HISTORY OF GPAT .

GREAT STANDARD