

[WWW.AMIE.NBCAFE.IN](http://WWW.AMIE.NBCAFE.IN)

## Part 2

Mechanical Properties of Materials

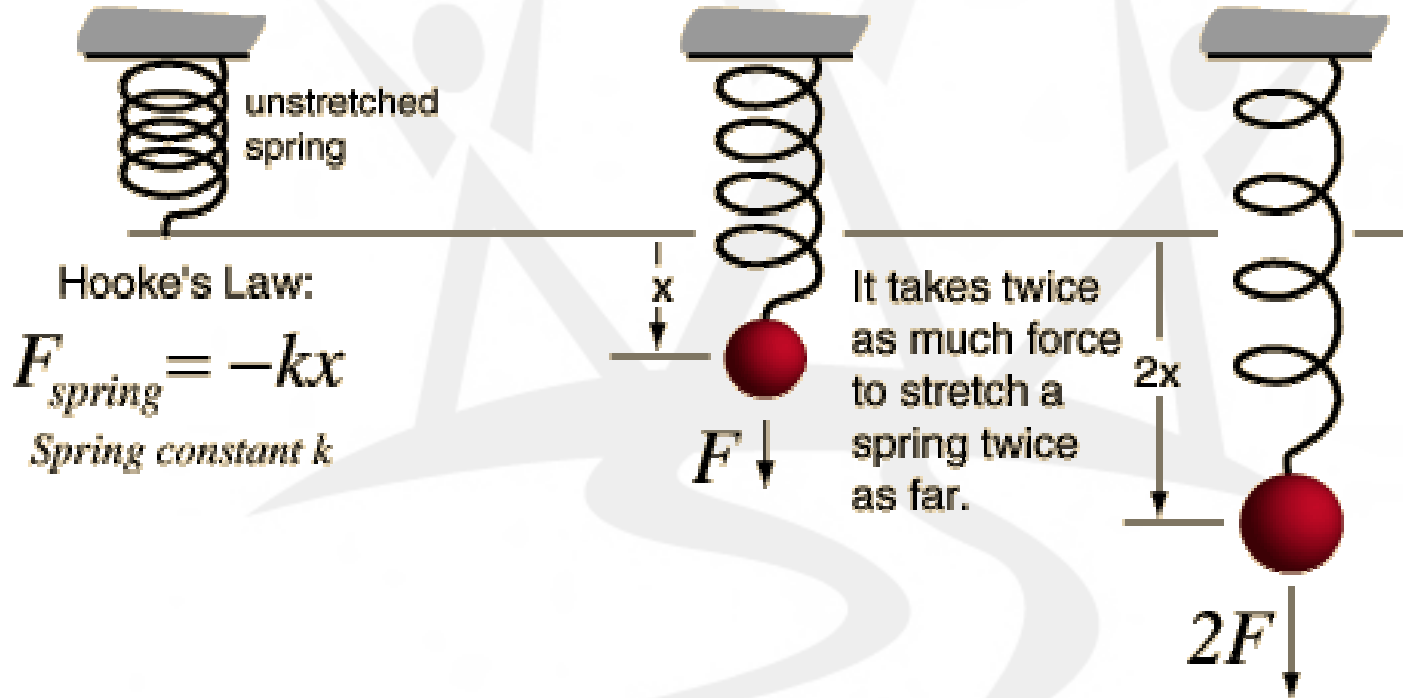
Amie Student Forum

# Elastic deformation – bending of beams

- Why study elastic deformation
  - Essential to predict how materials deform under applied forces
  - In order to choose “best” material for required function
- Examples of beams
  - Hockey sticks
  - Oars
  - AFM lever

# Hooke's Law

WWW.AMIE.NBCAFE.IN



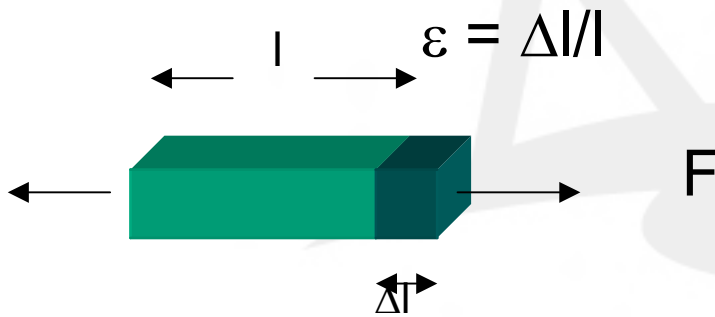
Amie Student Forum

# Strain Definitions

WWW.AMIE.NBCAFE.IN

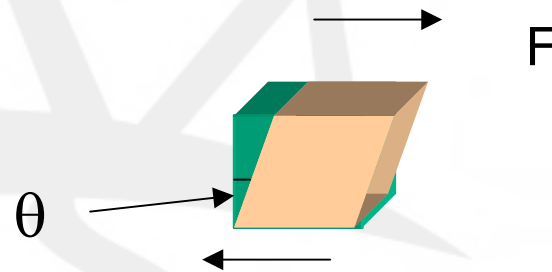
Tensile strain

Fractional increase in length



Shear strain

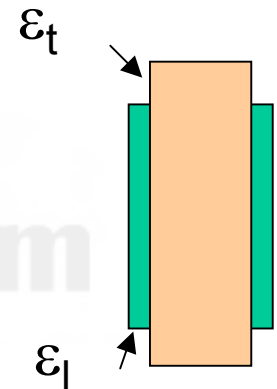
$\gamma = \tan \theta \approx \theta$  (small  $\theta$ )



Poisson's ratio

$\nu = - \text{lateral strain} / \text{tensile strain}$

$$= \epsilon_l / \epsilon_t$$



Amie Student Forum

# Stress

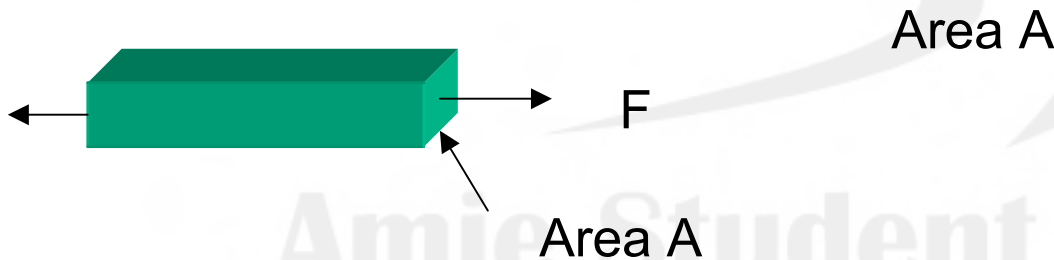
WWW.AMIE.NBCAFE.IN

## Definition

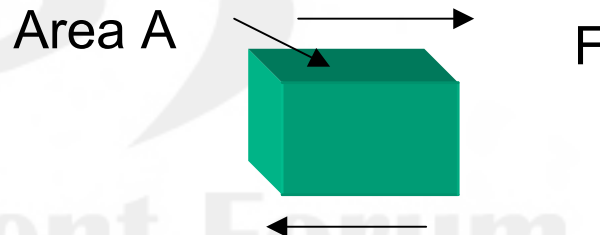
Internal resistance to deformation

$$\sigma = F/A \text{ (units; GPa, } 10^9 \text{ N m}^{-2}\text{)}$$

Tensile/ Compressive stress –  
Force is perpendicular to plane  
of resistance



Shear stress – Force  
parallel to plane of  
resistance ( $\tau$ )



Amie Student Forum

# Elastic deformation

WWW.AMIE.NBCAFE.IN

Non-permanent deformation – Material returns to original state when load is removed

Tension / compression

$$\sigma = E \epsilon$$

E is Young's modulus

Hooke's Law

Shear

$$\tau = G \gamma$$

G is the Shear Modulus

Pressure

$$P = -K \Delta V/V$$

K is the Bulk Modulus

For isotropic materials

$$G = E/2(1 + \nu)$$

$$K = E/3(1 - 2\nu)$$

Amie Student Forum

# Elastic Energy

Work done in extending a cube of material (side L) by dL

$$= \text{Force} \times dL$$

$$= \frac{1}{2} \sigma L^2 (\epsilon L)$$

$$= \frac{1}{2} \sigma \epsilon V$$

Energy per unit volume = Work per unit volume

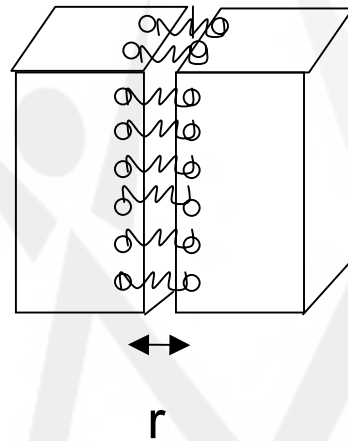
$$\text{Energy per unit volume} = \frac{1}{2} \sigma \epsilon$$

## Modulus of Resilience

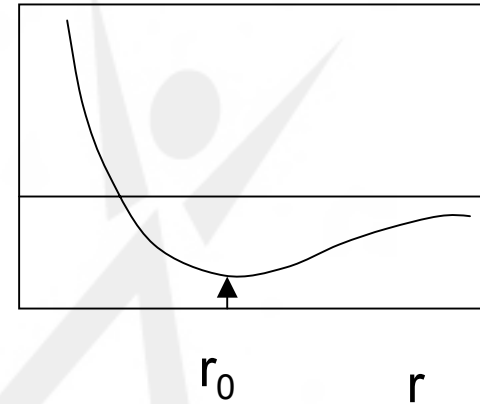
Amount of elastic energy stored in a material at point of failure

# Young's Modulus and Interatomic forces

WWW.AMIE.NBCAFE.IN



U



$$F = dU/dr$$

Stiffness of bond  $S = dF/dr = (d^2U/dr^2)_{r_0}$

$$\sigma = NS(r - r_0) = E (r - r_0)/r_0$$

N is number of bonds

$$E = S/r_0$$

per unit area =  $1/r_0^2$

Amie Student Forum



# Young's modulus – typical values ( GPa)

WWW.AMIE.NBCAFE.IN

Diamond	1000
Aluminium	69
Tungsten	407
Nylon	2

Calculated from interatomic potentials

	S (Nm <sup>-1</sup> )	E(GPa)
Covalent (eg C-C)	50-180	200-1000
Metallic	15-75	60-300
Ionic	8-24	32-96
Van der Waals	0.5- 1	2-4

Amie Student Forum

# Beams - Examples

- Roofing beams
- Floor boards
- Bridges
- Diving boards
- Cranes
- Girders
- Aircraft wings
- Oars
- AFM cantilever

# Bridges

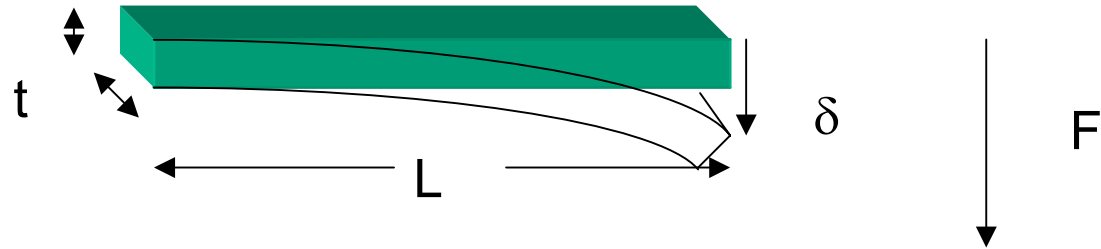
---



# Bending of beams

---

Require maximum stiffness and minimum weight



Weight (M) =  $L t^2 \rho$        $\rho$  is density

Deflection ( $\delta$ ) =  $4 L^3 F / t^4 E$

$M = (4L^5 F / \delta)^{1/2} (\rho^2 / E)^{1/2}$

Stiffness =  $F / \delta$

For a given stiffness weight is minimised by minimising  $\rho / E^{1/2}$

Performance measure  $P = E^{1/2} / \rho$  (Figure of Merit)

# Typical values ( $\text{GPa}^{1/2} \text{Mg}^{-1}\text{m}^3$ )

---

Steel	1.82
Polyurethane foam	2.44
Concrete	2.78
Aluminium	3.13
GFRP	3.23
Wood	5.88
CFRP	11.1

Must also consider cost and ease of manufacture

# Beyond the elastic limit- Plastic deformation

---

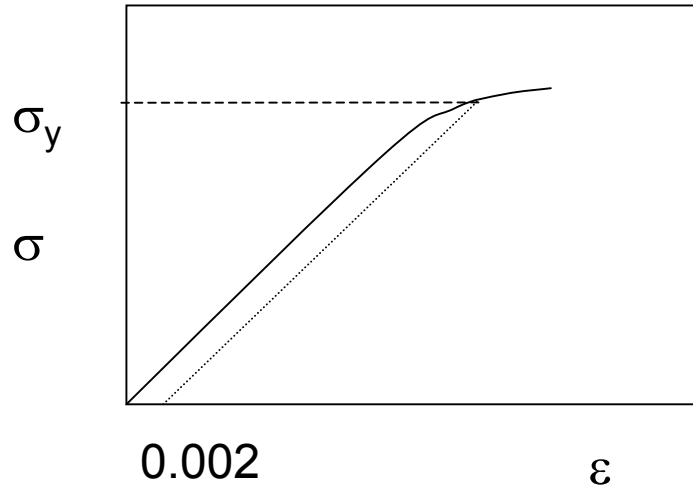
## Why study plastic deformation?

Need to know maximum loads materials can withstand before permanent shape changes occur

Need to know whether materials will fracture or deform

# Yield Strength

---



## Typical values (MPa)

Aluminium	35
High strength Steel	1400

Yield stress is stress at which noticeable plastic strain has occurred ( eg  $\epsilon_p = 0.002$  )

# Tensile Strength / Ductility

---

## Tensile Strength

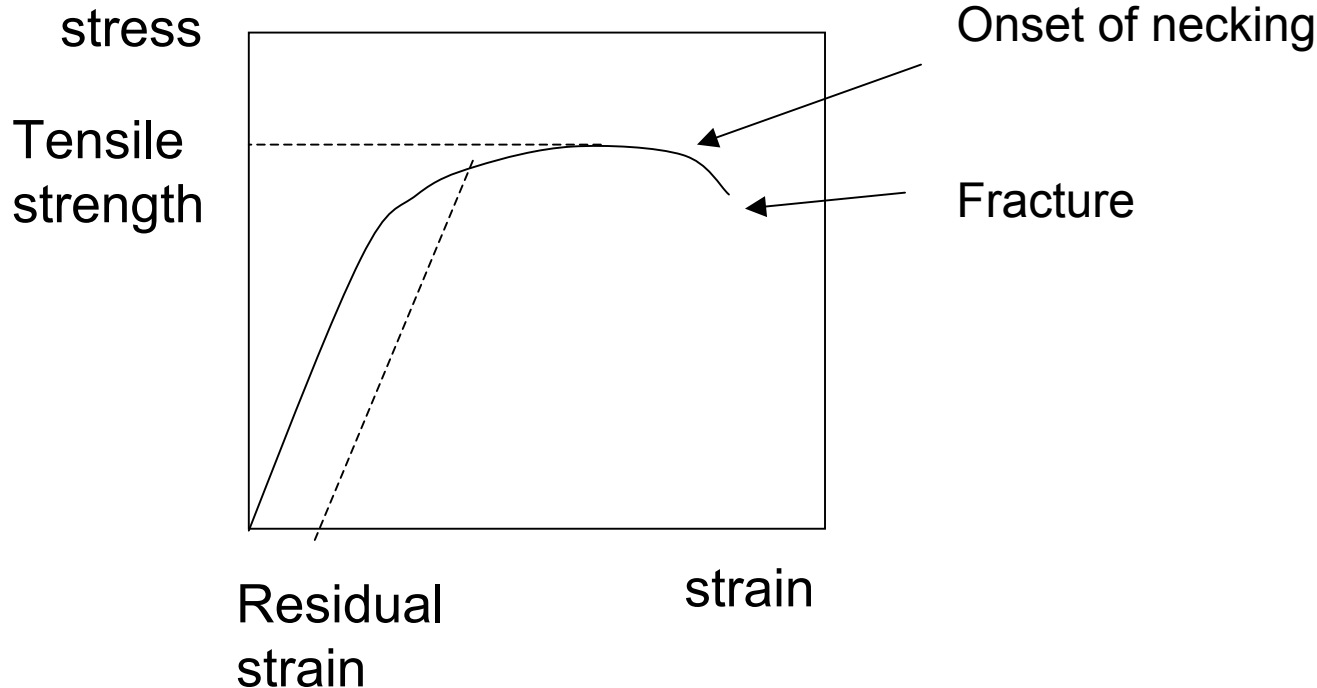
Maximum stress material can accommodate without fracture

## Ductility

Elongation at fracture

Metals ~ 40 %

Ceramics ~ 5%





# Toughness

---

## Toughness

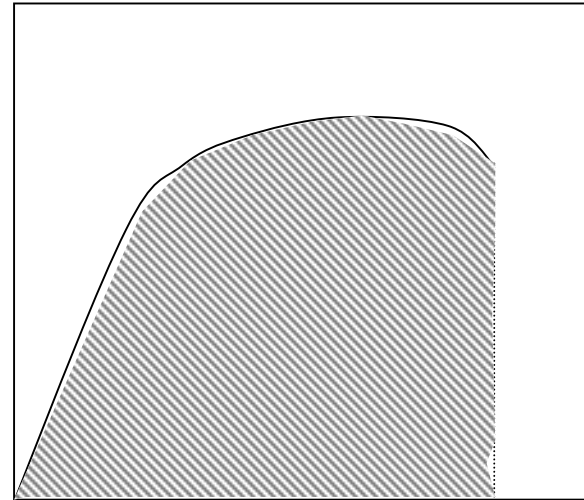
Energy required to  
break a material

Depends on ability of a  
material to absorb  
energy up to fracture

Area under  $\sigma$ - $\varepsilon$  curve  
up to fracture

Require high strength  
and high ductility

stress



strain

# Hardness

---

Resistance to localised plastic deformation (scratching)

## Moh's hardness scale

1 Talc

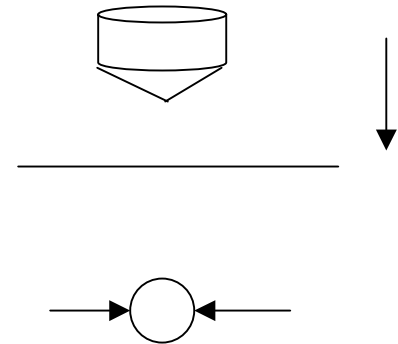
10 Diamond

## Hardness test

Small indenter forced into surface and size of indentation measured

Simple, inexpensive and non-destructive

Diamond cone



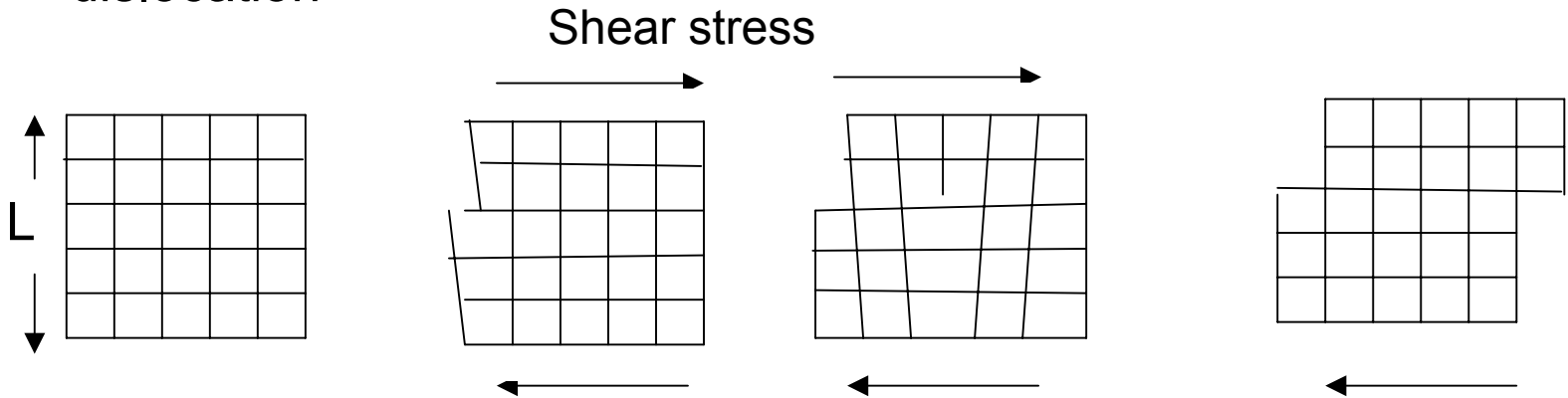
Measure size of indentation

# Mechanisms for plastic deformation

---

## Dislocation motion

Edge  
dislocation



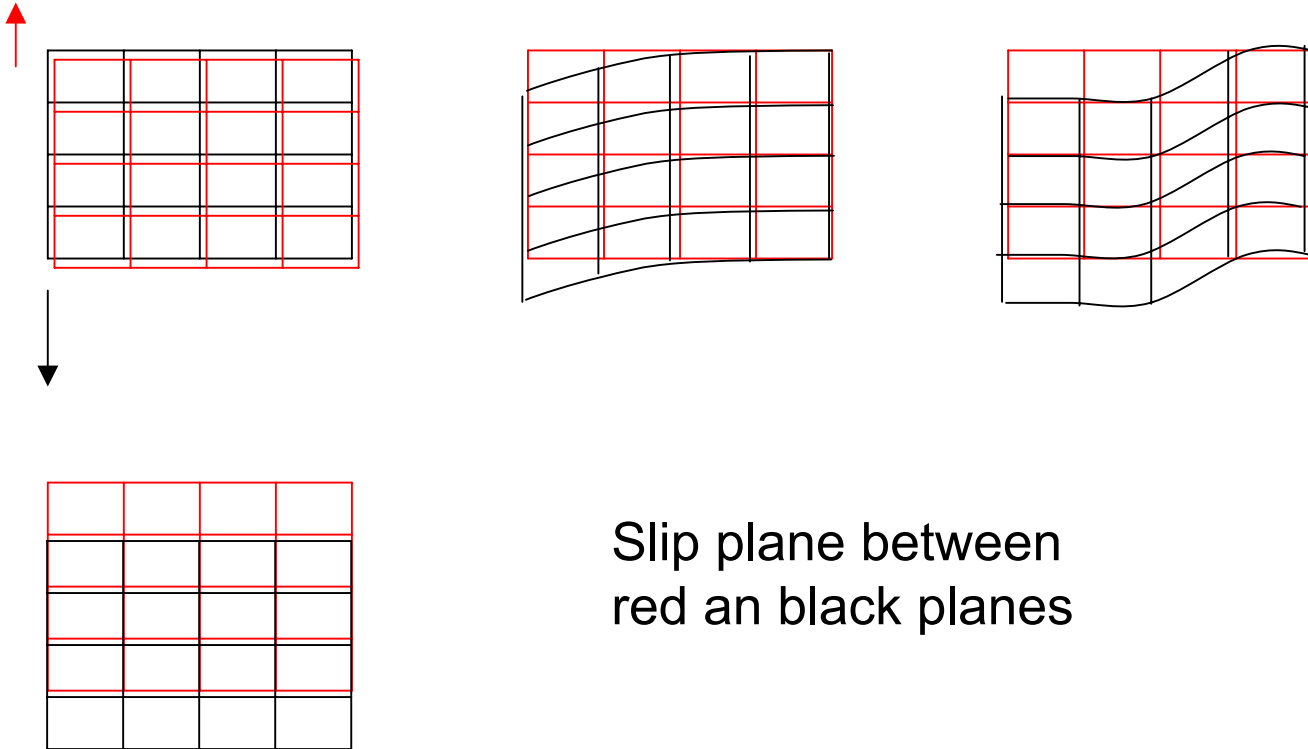
Dislocation glides along easy direction –slip plane

Unit of slip – Burgers vector

Plastic shear strain of  $b/L$  per dislocation moved through the crystal

# Screw dislocation

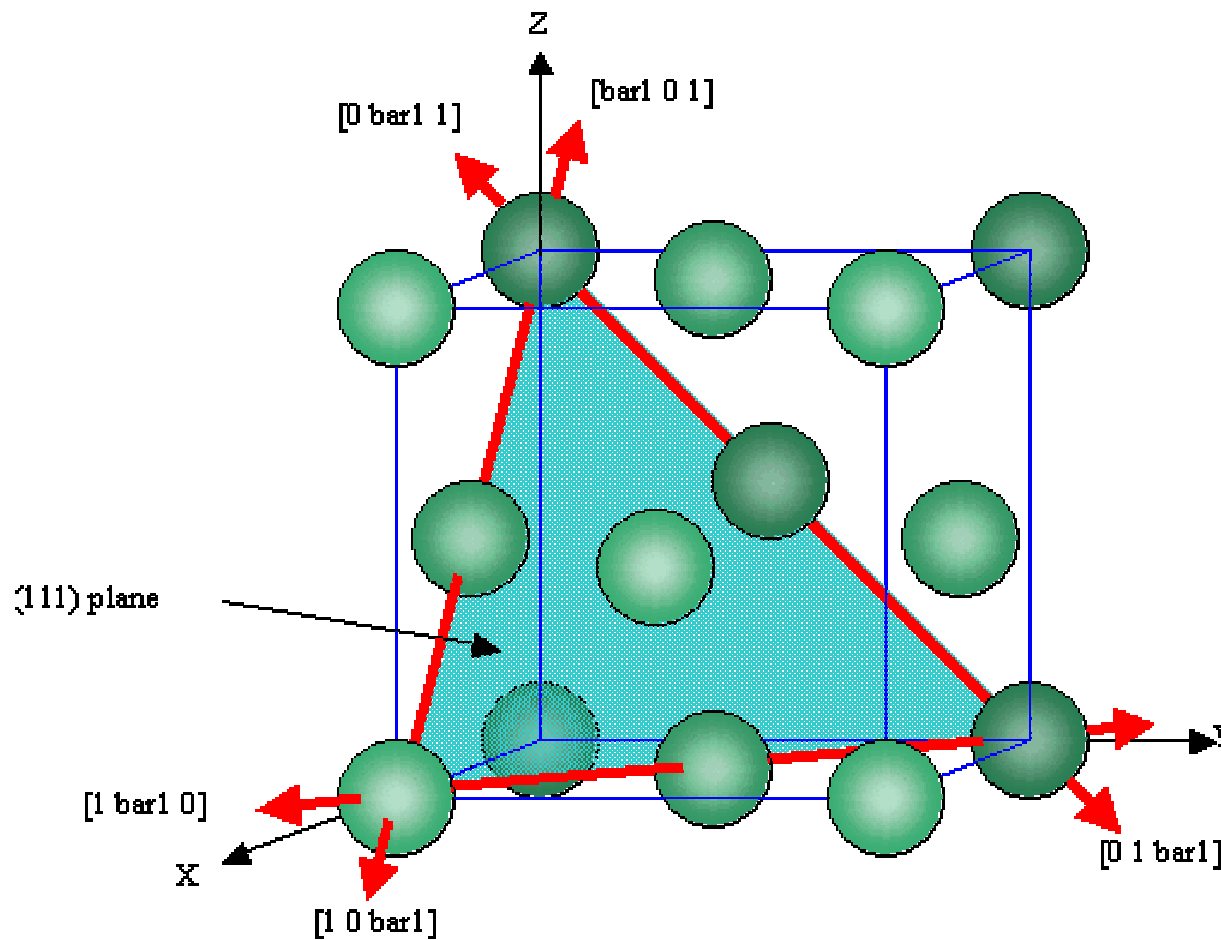
---



# FCC Slip planes

(111) close-packed planes

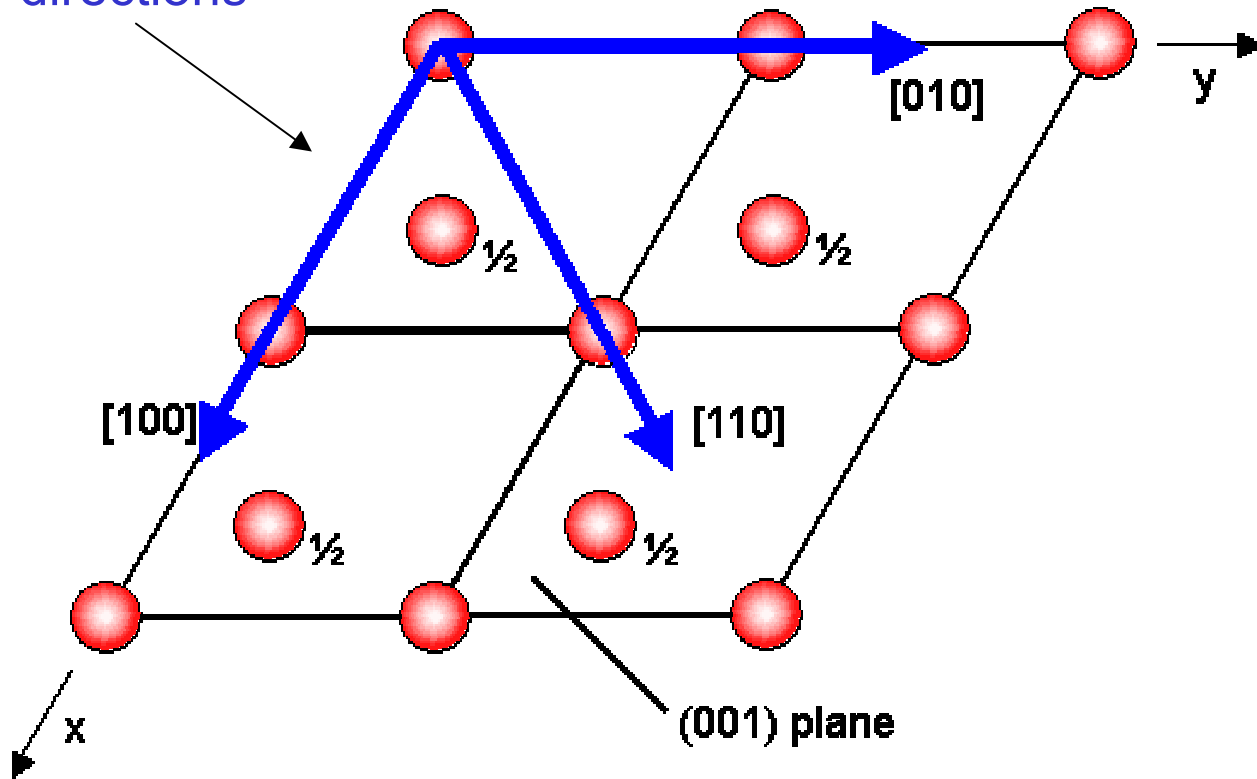
(0  $\bar{1}$  1) close packed directions



# HCP Slip planes

(001) Plane (close packed)

Slip directions



# Slip Systems

---

Crystal Structure	Slip Planes	Slip Directions	Number of slip systems
FCC (Cu,Al,Ni,Ag,Au)	{111}	<110>	12
BCC (Fe,W,Mo)	{110}	<111>	12
HCP (Cd,Mg,Ti,Be)	{001}	<110>	3

FCC metals soft at all temperatures

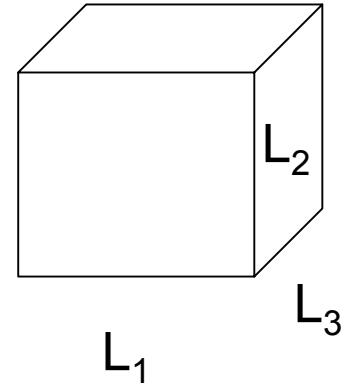
BCC metals brittle at low T – slip planes not close packed

HCP metals tend to be brittle – few slip planes

# Dislocation motion

---

- Force per unit length on dislocation line  $F$
- The movement of dislocations allows the applied stress ( $\tau$ ) to do work
- On moving a dislocation through crystal (distance  $L_1$ ) work done by  $\tau$  is  $\tau b L_1 L_3$
- Work done on dislocation is  $F L_1 L_3$
- Equating the work gives  $F = \tau b$
- Only component of stress on slip plane does work





# Critical Shear Stress

---

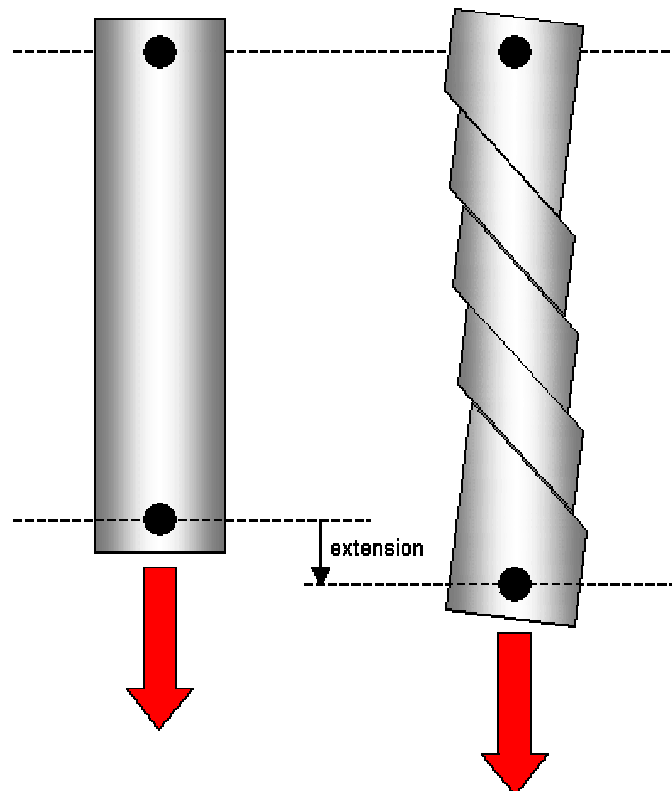
$$\tau_{\text{crit}} = G \exp -(2\pi W/b)$$

W is width dislocation core

Dislocation cores are narrow in covalent materials but can be extended in metals

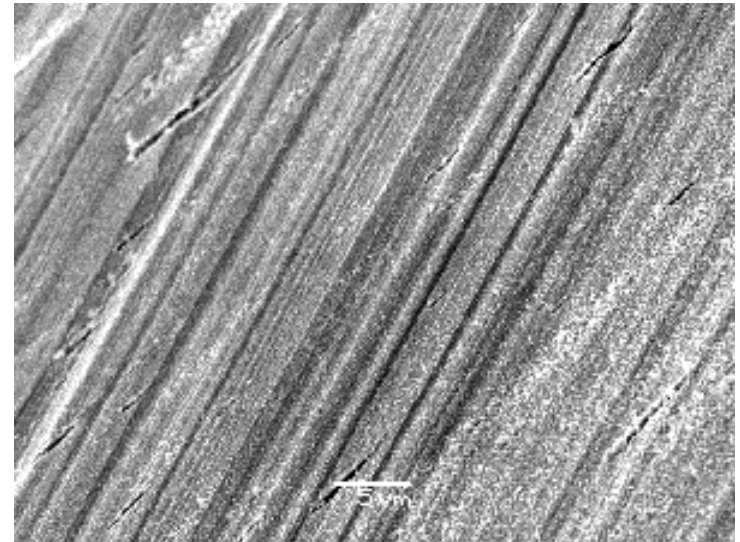
# Slip

[www.msm.cam.ac.uk/doitpoms/tlplib/index.php](http://www.msm.cam.ac.uk/doitpoms/tlplib/index.php)



Unslipped single crystal fixed at top end.

Single crystal after plastic deformation by tensile stress in the direction of the arrow. Slip occurs on distinct parallel planes.



# Slip in single crystals

---

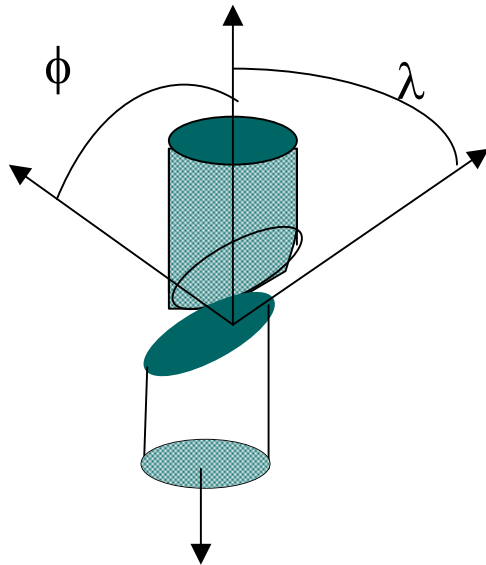
Dislocation motion or slip occurs when the resolved shear stress reaches a critical value

$\phi$  is angle between normal to slip plane and applied stress

$\lambda$  is angle between the slip direction and the applied stress

Resolved shear stress

$$\tau_R = \sigma \cos \phi \cos \lambda$$



Slip occurs when maximum  $\tau_R$  exceeds a critical value  $\tau_{crss}$  (property of a material)

$$\sigma_y = \tau_{crss} / (\cos \phi \cos \lambda)_{max}$$

Minimum yield stress when  $\phi = \lambda = 45^\circ$

Slip bands formed

# Single Crystal Slip

---

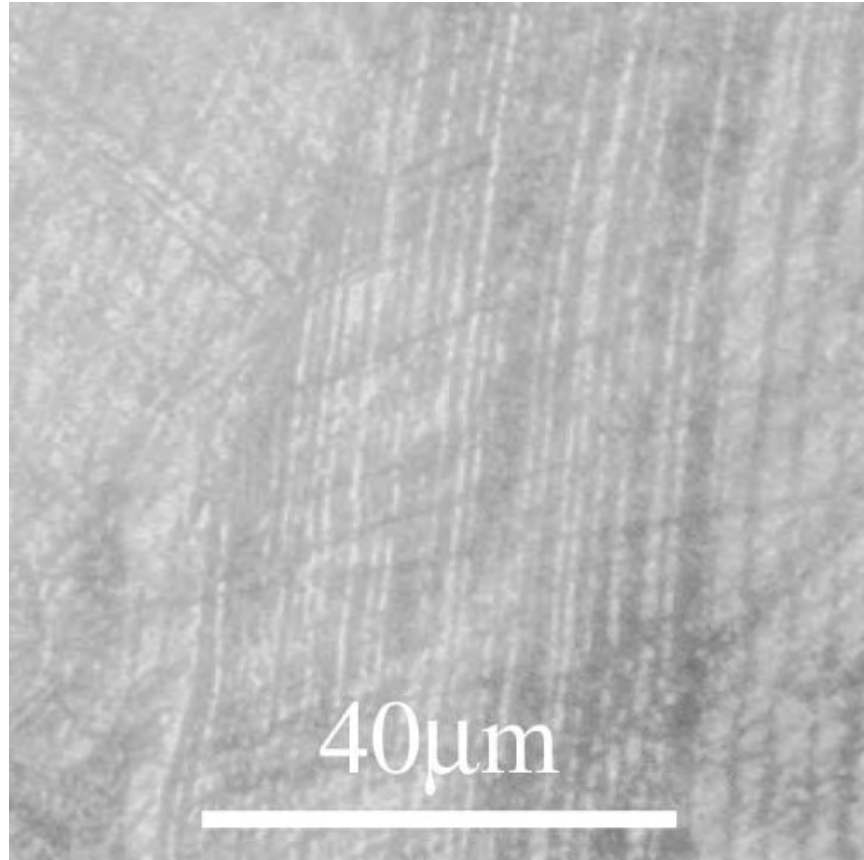
- Slip start on single plane when resolved stress reaches  $\tau_{\text{crit}}$
- As deformation continues the number of slipped planes increases and the slip per plane increases
- For bcc and fcc metals a second slip system may be initiated

# Slip bands

---



Figure 11 - Graphical representation of slip bands. (from Hertzberg<sup>5</sup>)



Slip bands in brass

# Deformation in polycrystalline materials

---

Random orientation of grains means slip planes differ in different grains

Plastic flow occurs first in most favourably oriented grains

Plastic deformation restricted by the need for the crystal to fit to neighbouring grains

After deformation grains elongated along direction of load

Grain boundaries reduce dislocation motion

Polycrystalline materials stronger than single crystals

# Strengthening Materials

---

Why study material strengthening?

To understand the relationship between  
microstructure and strength

Awareness of available processes for  
maximising material performance

# Increasing the Yield Strength

---

Dislocations – carriers of deformation

The ability of a metal to plastically deform depends on the ability of dislocations to move

Reducing the mobility of dislocations increases yield strength

Restricting or hindering dislocation motion renders a material harder and stronger



# Solid solution strengthening

---

High purity metals are softer than alloys of the same base metal

Add substitutional and interstitial impurities (add to melt)

Large and small impurities diffuse to dislocations to reduce strain energy.

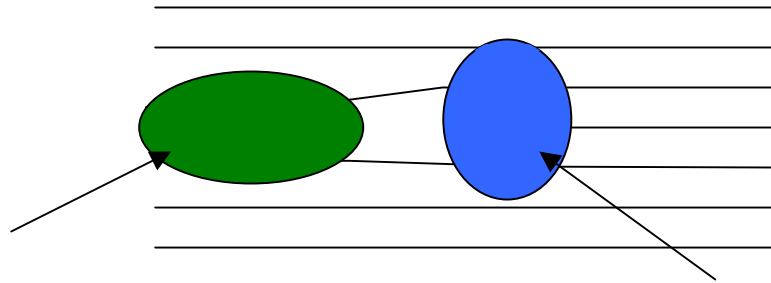
Larger stress required to separate dislocation for motion

$\sigma_y \propto$  concentration, size mismatch, Shear modulus

Most metals have limited solubility in other metals

# Interaction between dislocations and impurities

---



Region of dilation

Large impurities  
diffuse here

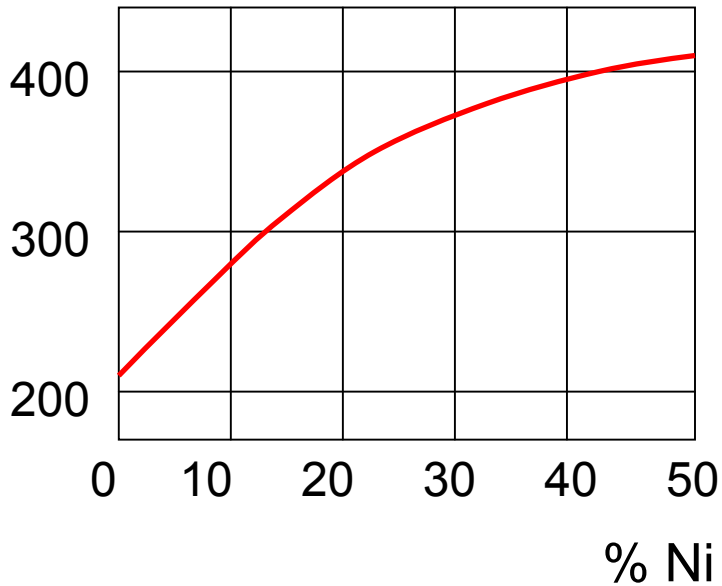
Region of Compression

Small impurities diffuse  
here

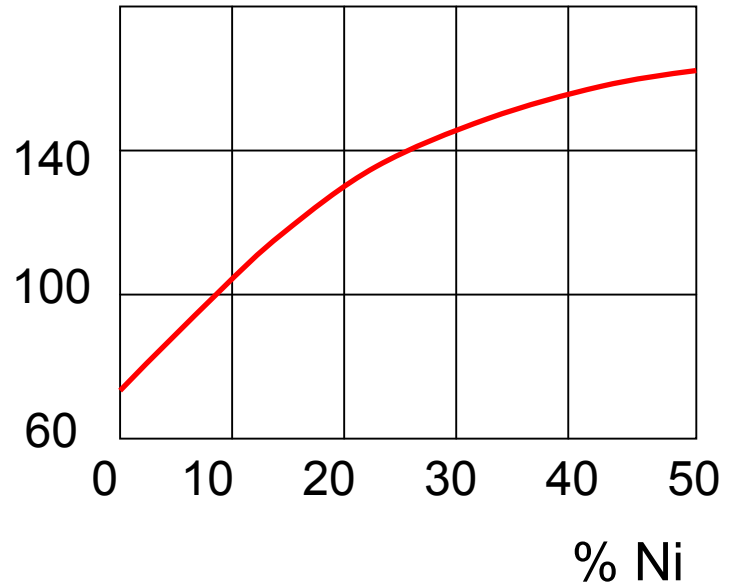
# Cu/Ni Alloys

---

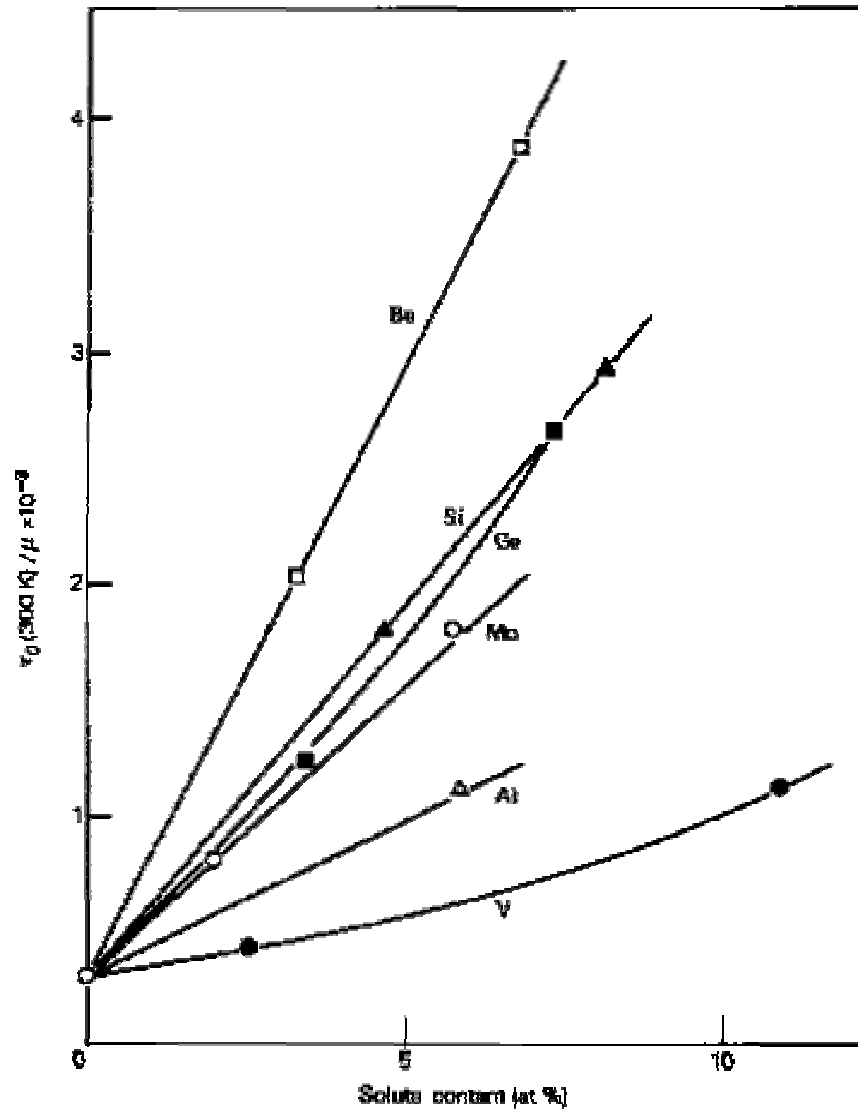
Tensile strength  
(MPa)



Yield strength  
(MPa)



# Steel



Larger size  
difference gives  
greater  
strengthening

# Reduce grain size

---

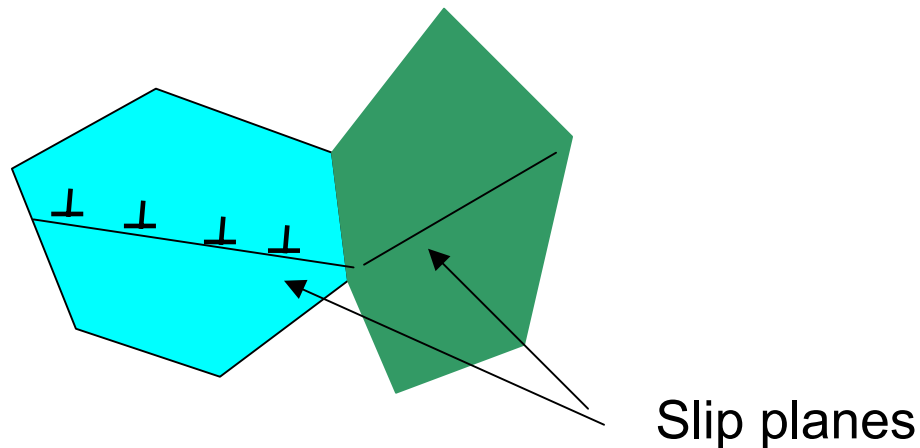
Dislocation must change direction when crossing grain boundary

Dislocations may pile up at boundaries repelling further dislocations

Small angle grain boundaries are not effective in blocking dislocations

Twin boundaries do block dislocations

Phase boundaries block dislocations



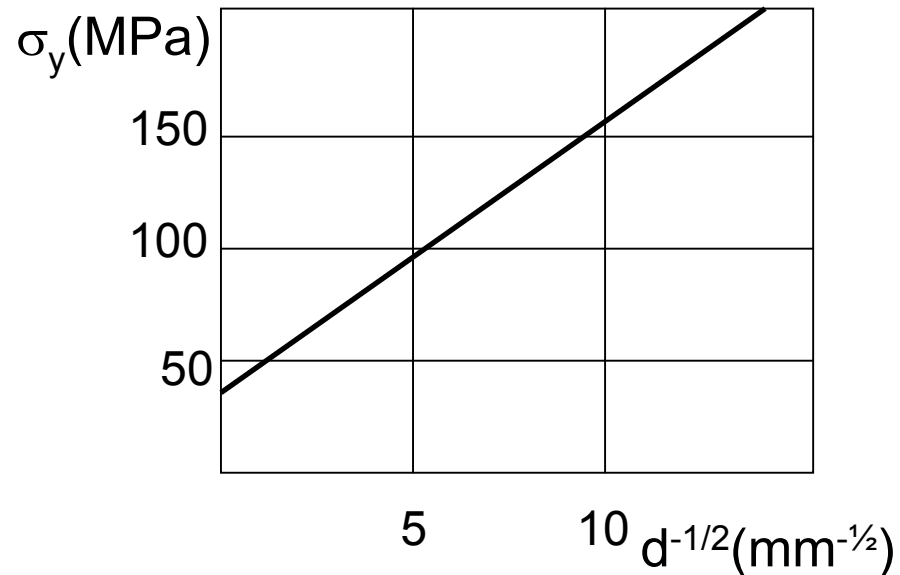
# Hall-Petch Relationship

---

For average grain size  $d$

$$\sigma_y = \sigma_0 + k_y d^{-1/2}$$

eg Brass (70%Cu 30%Zn)



# Grain Size Regulation

---

- By rate of solidification from the liquid phase
  - Rapid cooling produces small grains
  - Slow cooling produces large grains
- Grain size can be varied by plastic deformation (to increase dislocation density) followed by heat treatment ( to rearrange dislocations into grain boundaries)

# Precipitation Hardening

---

- **Weak obstacles**
  - Coherent particles
    - Lattice planes continuous
    - Long range stress field
    - Dislocations can cut through – costs energy
  - Partially coherent particles
    - Most lattice planes continuous
    - Long range stress fields from misfit dislocations
    - Dislocations can cut through
- **Strong obstacles**
  - Hard precipitates
  - Dislocations cannot cut through
  - Critical stress required to bypass particles



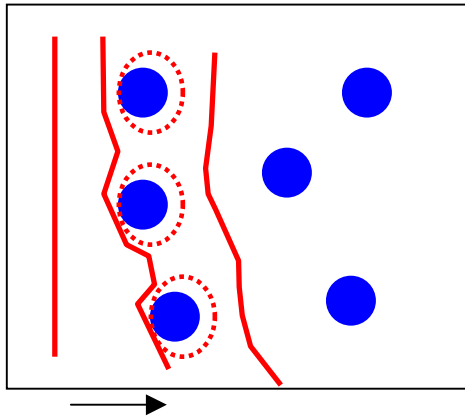
# Precipitation hardening

---

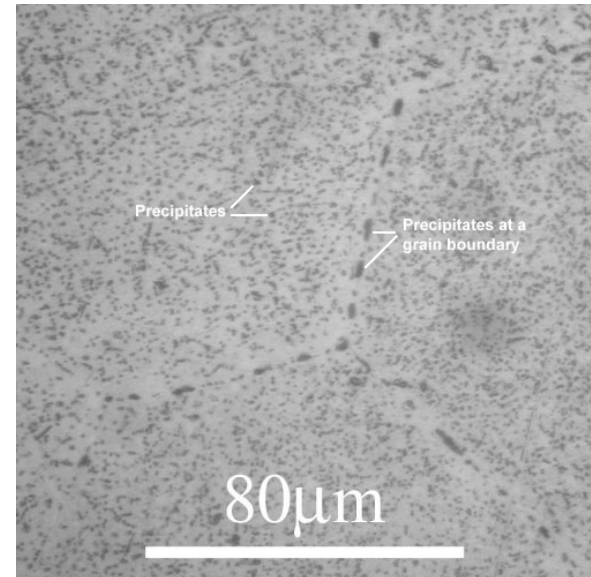
Add small hard precipitates (eg SiC in Fe)

Particles are difficult to shear – pin dislocations

$\sigma_y \propto 1/S$  (spacing between precipitates )



Dislocation motion



Al with 0.04% Cu

# Strain hardening (cold working)

---

The phenomenon whereby a ductile metal becomes harder and stronger as it is plastically deformed

Increase dislocation density by repeated tensile loading

Dislocations repels each other and get entangled

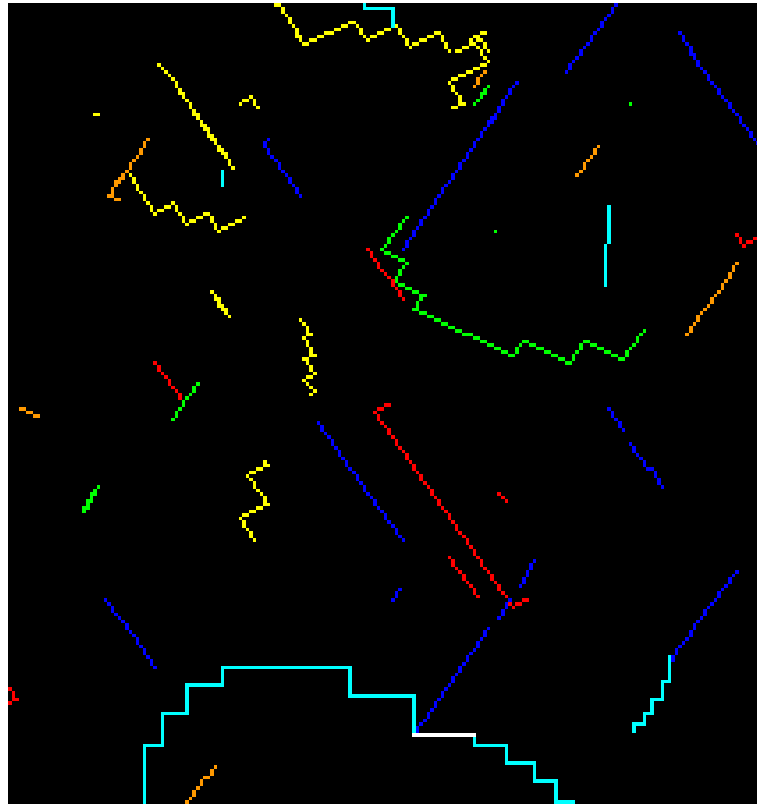
Decrease in dislocation motion.

$\sigma_y$  increases with dislocation density ( $\rho_d \sim 10^{10} \text{ mm mm}^{-3}$ )

# Dislocation interactions

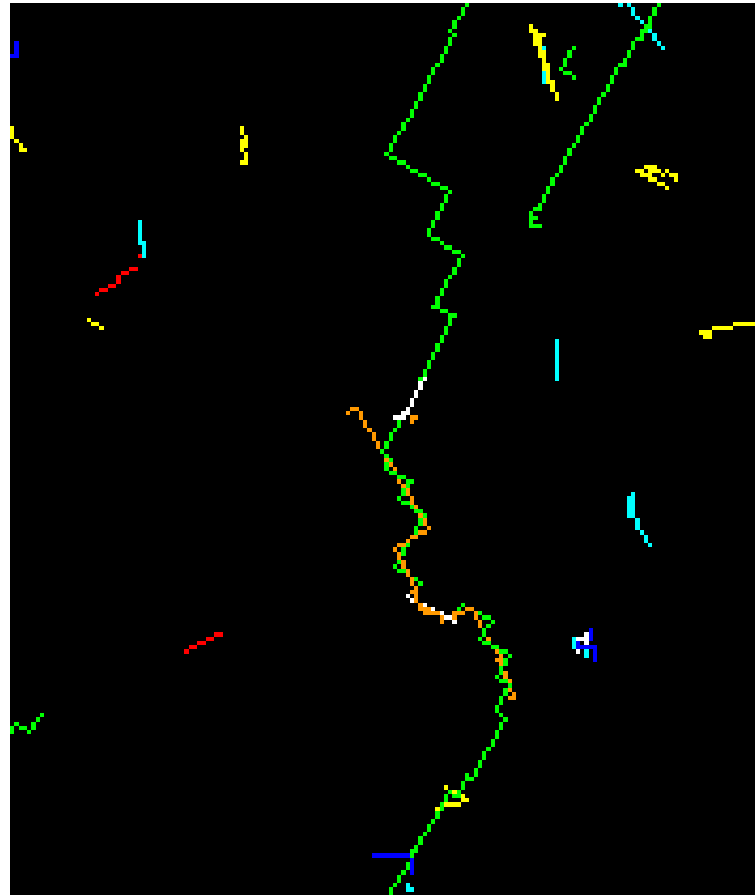
---

[//zig.onera.fr/DisGallery/index.html](http://zig.onera.fr/DisGallery/index.html)



# Dislocation debris

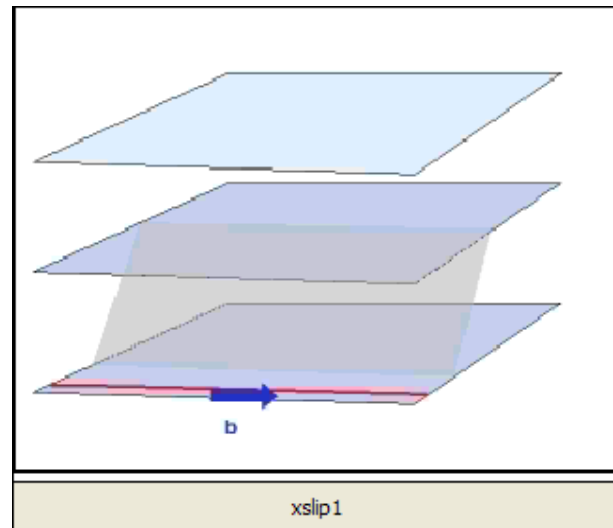
---



# Cross-slip

---

Screw dislocation can glide in any plane containing slip vector



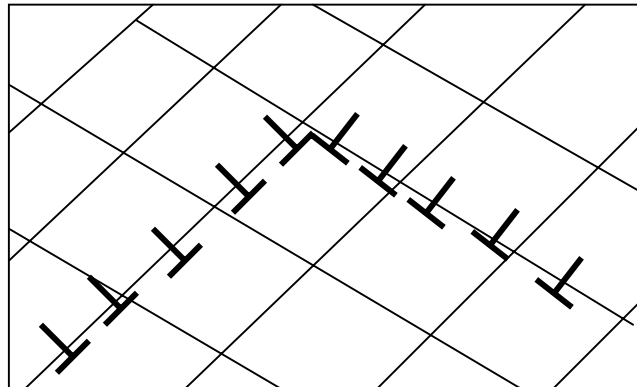
# Percentage Cold Work

---

$$\%CW = (A_0 - A_d)/A_0 \times 100$$

$A_0$  original area

$A_d$  area after deformation



# Softening materials - Annealing

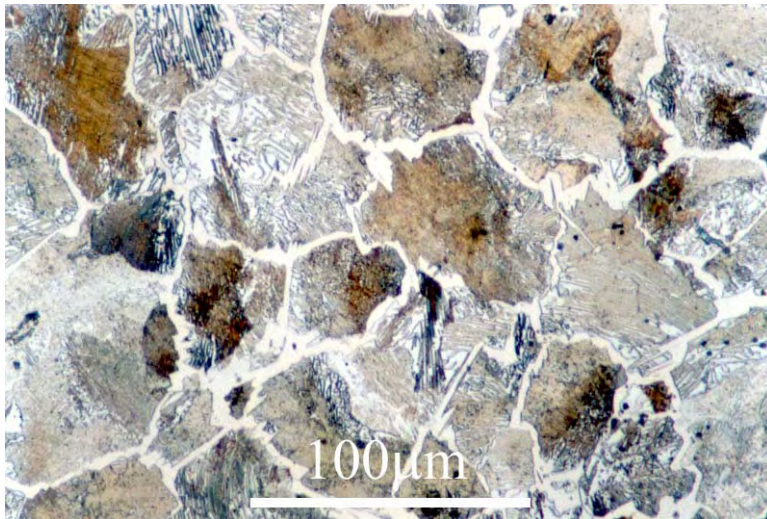
---

- Exposed to elevated temperature for extended period then slowly cooled

Relieves stress introduced by machining and non-uniform cooling

Increases softness ductility and stiffness

Changes micro structure



Fe, C 1.3 (wt%) steel,  
annealed at 1100°C

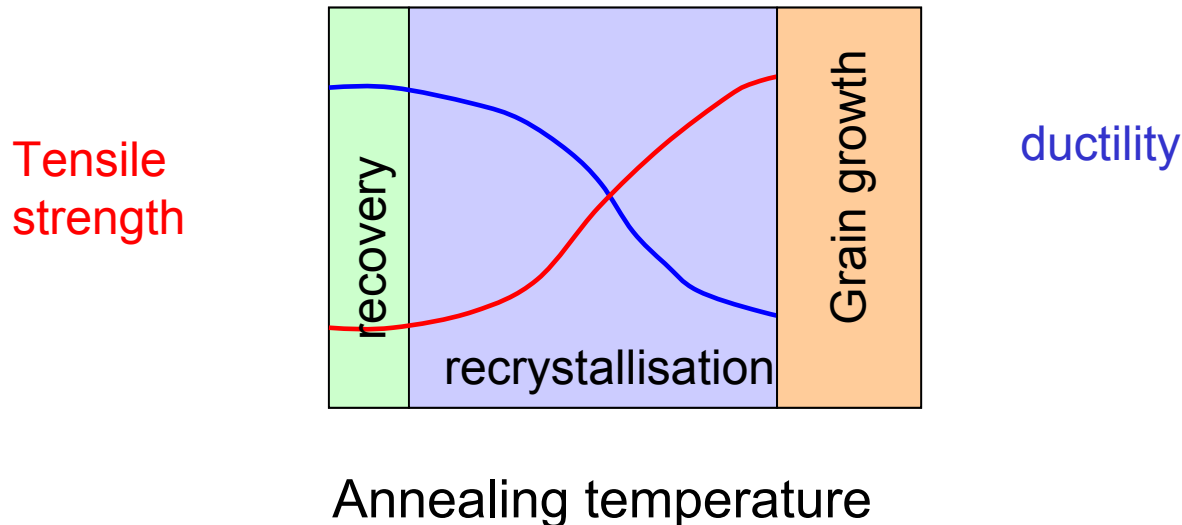
# Stages of annealing

---

Recovery – annihilation reduces dislocation density and dislocations rearrange to lower energy conformations

Recrystallisation – new strain-free equiaxed grains with low dislocation density are formed. Nuclei grow until parent material consumed

Grain growth - large grains consume smaller grains





# Strengthening - Summary

---

- Solution strengthening
  - Useful for moderate strength increase (few 100 MPa)
  - Limited solubility for solutes with large misfits
- Decrease grain size
  - Limited strength increase (few 100 MPa)
  - Grains grow at moderate temperatures
- Precipitation hardening
  - Can achieve strength increase of 1000 MPa for fine dispersion of hard particles
  - Particles tend to dissolve at high temperatures
- Cold Working
  - Increases strength but reduces ductility and toughness
  - Anneals out at moderate temperatures

# Fracture and fatigue

---

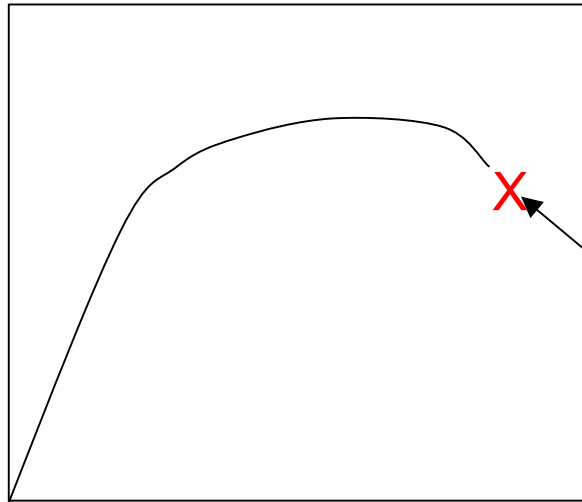
- Why study failure and fatigue?

Need to understand the various failure modes in order to minimize the chances of failure in a design

# Fracture

---

stress

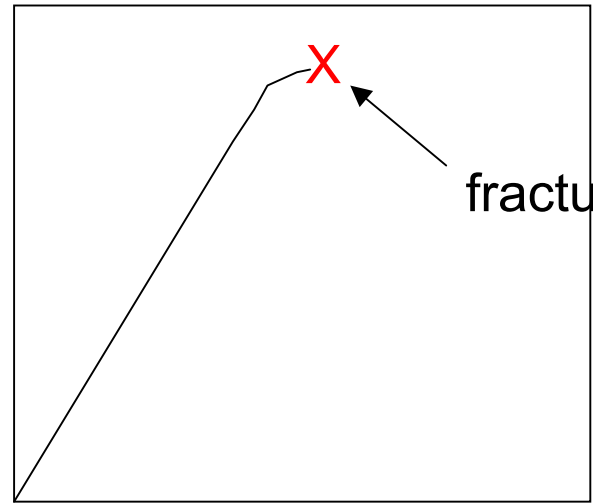


strain

Ductile Material

Large energy  
absorption before  
fracture

stress



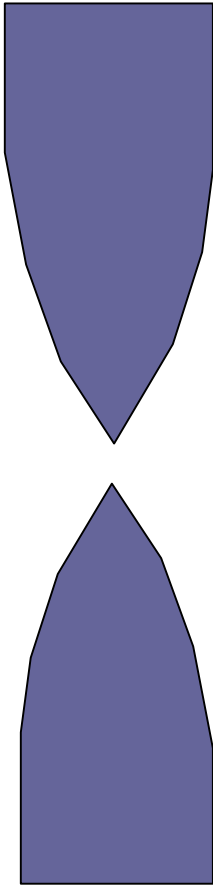
strain

Brittle Material

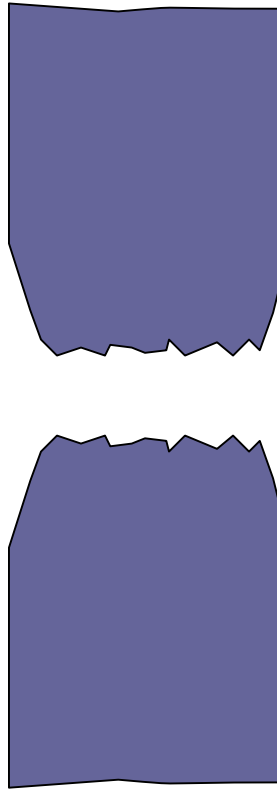
Low energy absorption  
before fracture

# Types of Fracture

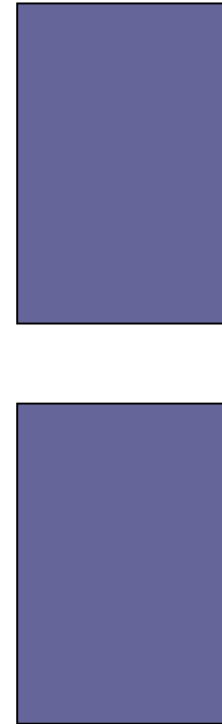
---



Very ductile



Moderately ductile



Brittle

# Brittle Fracture

---

- Some materials break suddenly while still elastic
- Rapid progression of crack perpendicular to direction of applied stress
- Broken surfaces fit together after fracture
- Fracture surfaces have grainy, faceted texture
- Crack propagates by successive breaking of bonds along specific crystallographic directions (cleavage planes)

# Ductile Fracture

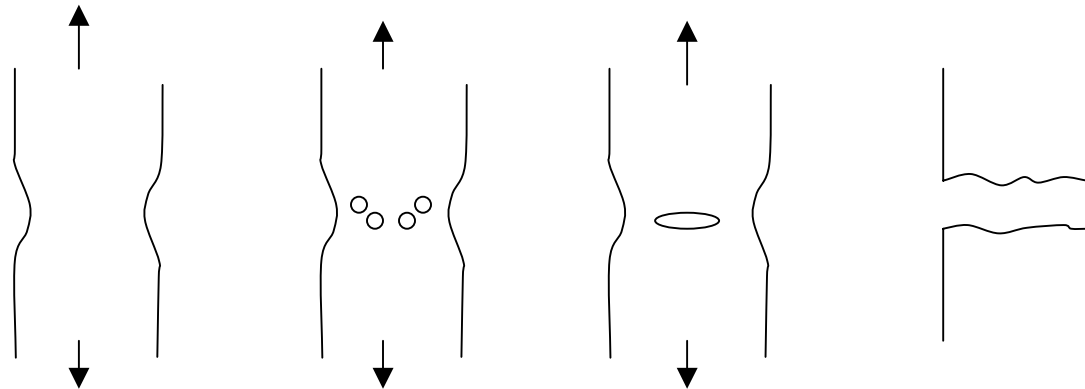
---

Typical of metals

Failure progresses slowly

Necking – microvoids-elliptic crack- crack growth – failure

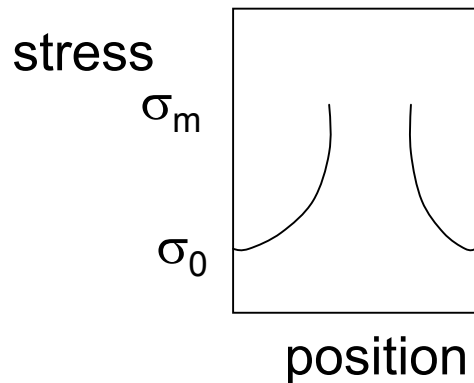
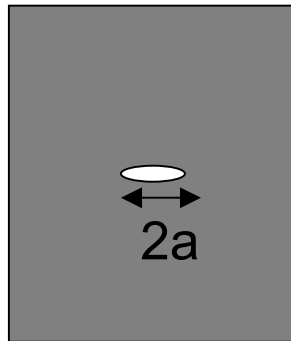
Cup and cone fracture



# Fracture Mechanics

---

- Theoretical strength of materials  $\sim E/10$
- Actual strength around 10 to 1000 times lower
- Griffith proposed discrepancy arose because of microscopic flaws in materials
- Applied stress amplified around flaws  $\sigma_m = 2\sigma_0(a/\rho_t)^{1/2}$



# Stress Concentration Factor

---

$$\sigma_m = 2\sigma_0(a/\rho_t)^{1/2}$$

$$K_t = \sigma_m/\sigma_0 = 2(a/\rho_t)^{1/2}$$

The Stress Concentration Factor  $K_t$  is the degree to which the stress is amplified at a flaw or crack

In ductile materials plastic deformation occurs when stress exceeds yield stress – this reduces the stress concentration factor below the theoretical value



# Griffith's criterion

Criterion for rapid crack progression

Stored elastic energy must exceed energy of the crack

cf Inflated balloon

Consider a material with crack length  $a$  thickness  $t$

$a$  increases to  $a + \delta a$

Elastic energy  $U_{el} = (\sigma^2/2E) (\pi a^2 t / 2)$

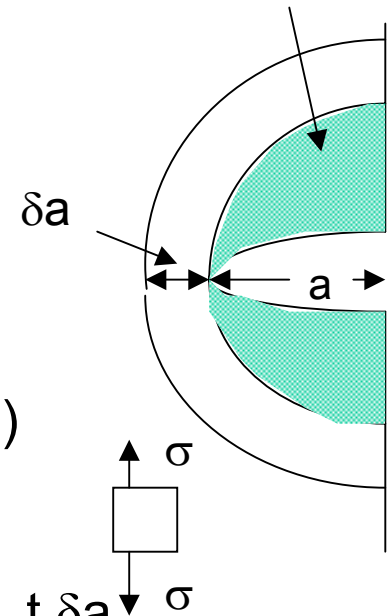
Change in Elastic energy  $\delta U_{el} = dU_{el}/da \delta a$

$$= (\sigma^2/2E) (2\pi a t \delta a/2)$$

Costs  $2\gamma_s t \delta a$  to create new surface

Critical stress when  $\delta U_{el} = 2\gamma_s t \delta a$

Material relaxes to zero stress



$$\sigma_c = 2(E \gamma_s / \pi a)^{1/2}$$

# Stress Intensity Factor

---

General relationship between applied stress and stress at crack tip

Stress Intensity factor  $K$  (units  $\text{MPa m}^{1/2}$ )

$$K = Y\sigma (\pi a)^{1/2}$$

$Y$  is a dimensionless parameter that depends on crack geometry, specimen size and manner of load application

Fracture Toughness

$$K_c = Y\sigma_c (\pi a)^{1/2}$$

# Fracture Toughness

**Table 8.1W** Room-Temperature Yield Strength and Plane Strain Fracture Toughness Data for Selected Engineering Materials

<i>Material</i>	<i>Yield Strength</i>		<i>K<sub>Ic</sub></i>	
	<i>MPa</i>	<i>ksi</i>	<i>MPa√m.</i>	<i>ksi√in.</i>
<b>Metals</b>				
Aluminum alloy <sup>a</sup> (7075-T651)	495	72	24	22
Aluminum alloy <sup>a</sup> (2024-T3)	345	50	44	40
Titanium alloy <sup>a</sup> (Ti-6Al-4V)	910	132	55	50
Alloy steel <sup>a</sup> (4340 tempered @ 260°C)	1640	238	50.0	45.8
Alloy steel <sup>a</sup> (4340 tempered @ 425°C)	1420	206	87.4	80.0
<b>Ceramics</b>				
Concrete	—	—	0.2–1.4	0.18–1.27
Soda–lime glass	—	—	0.7–0.8	0.64–0.73
Aluminum oxide	—	—	2.7–5.0	2.5–4.6
<b>Polymers</b>				
Polystyrene (PS)	—	—	0.7–1.1	0.64–1.0
Polymethyl methacrylate (PMMA)	53.8–73.1	7.8–10.6	0.7–1.6	0.64–1.5
Polycarbonate (PC)	62.1	9.0	2.2	2.0

<sup>a</sup> **Source:** Reprinted with permission, *Advanced Materials and Processes*, ASM International, © 1990.

# Ductile to brittle transition

---

- Some metals become brittle below a certain temperature
- Above transition fracture surface is fibrous (shear character)
- Below transition surface is shiny and granular (cleavage character)
- FCC metals do not generally become brittle – dislocation motion not strongly T dependent
- Structures should only be used above transition temperature to avoid brittle failure (transport ships in world war II – weld failure, Titanic)

**Ships**

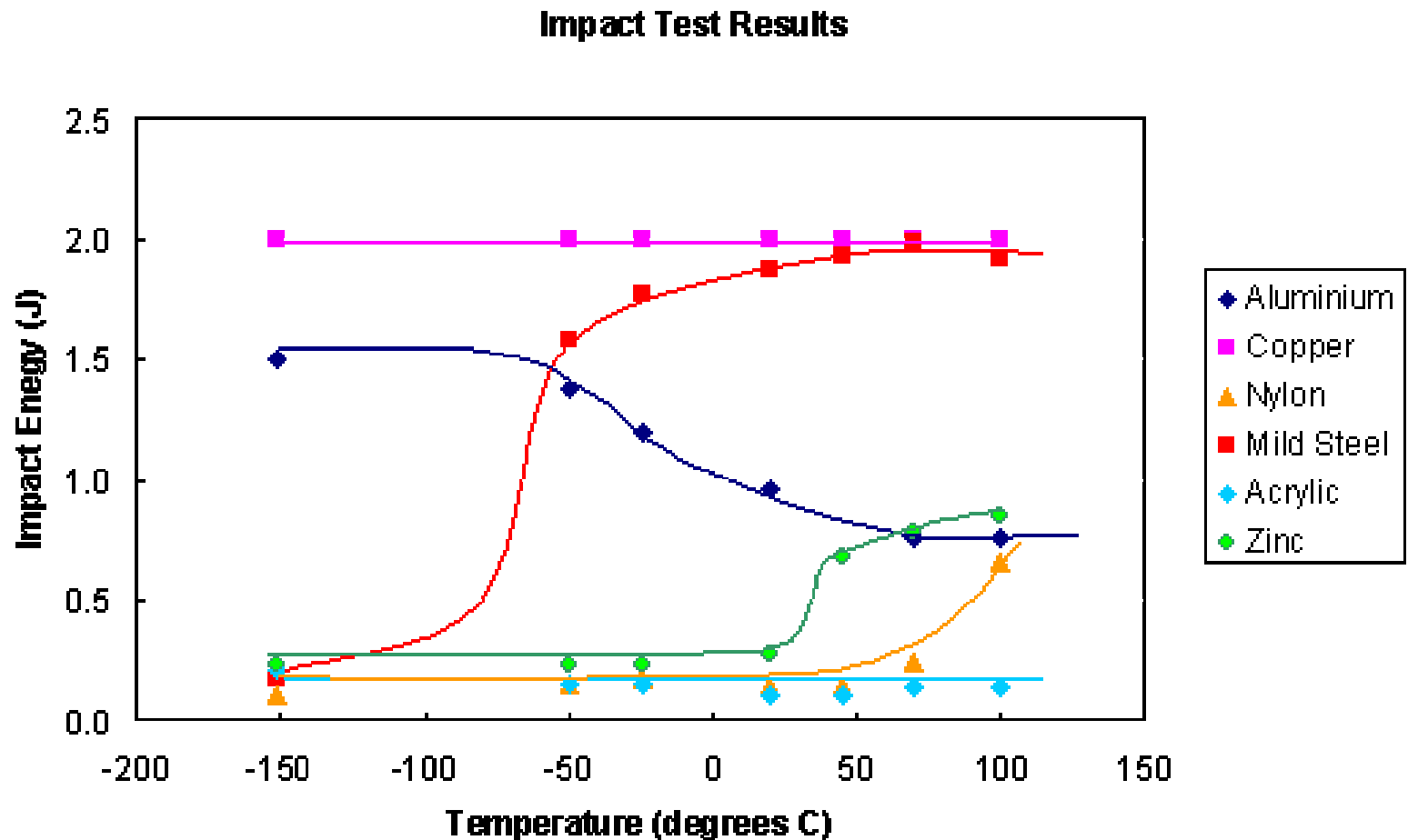


# Ductile to brittle transition

---

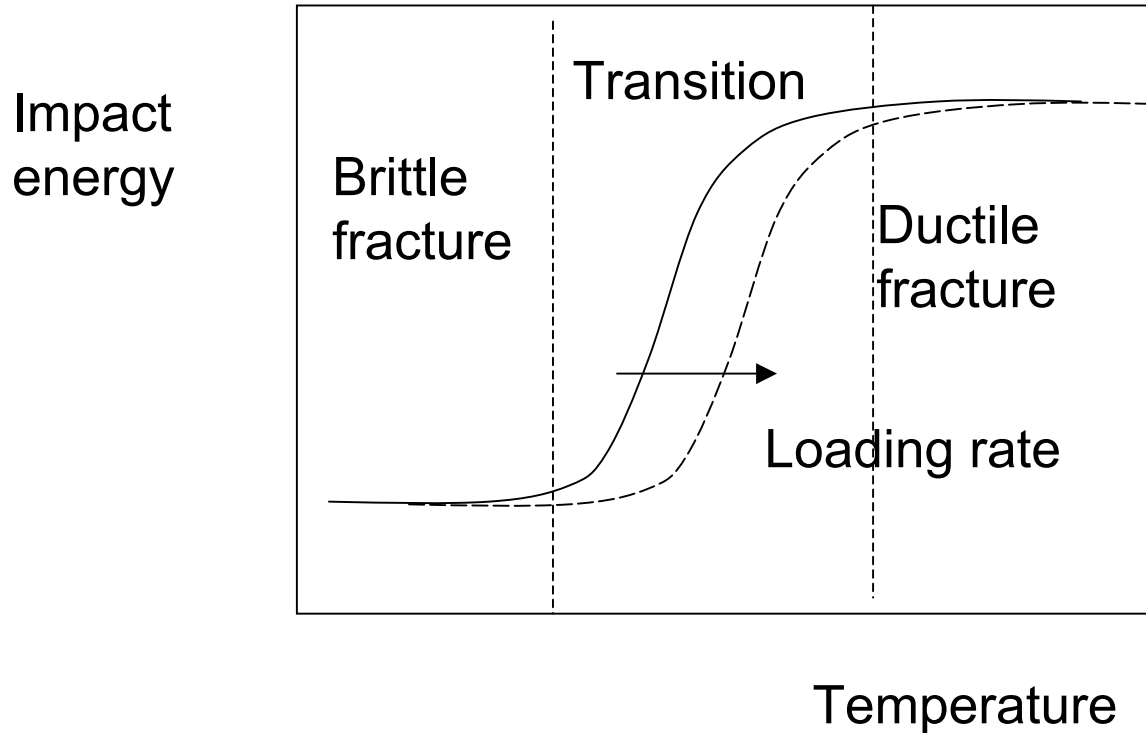
- FCC metals do not undergo ductile to brittle transition
- In BCC metals transition temperature is around  $0.1 T_m$
- For ceramic materials transition temperature is usually greater than  $0.5 T_m$
- Transition temperature depends on strain rate and pressure

# Ductile to brittle transition



# Ductile to brittle transition

---



Impact energy has 3 main components

Elastic strain + plastic work done + energy to create fracture surface

# Fatigue

---

Failure under dynamic fluctuating stress

Largest single cause of failure in metals -

90% engineering failures

Crack propagation at loads well below the critical stress

## Definitions

Mean stress  $\sigma_m = (\sigma_{\max} + \sigma_{\min})/2$

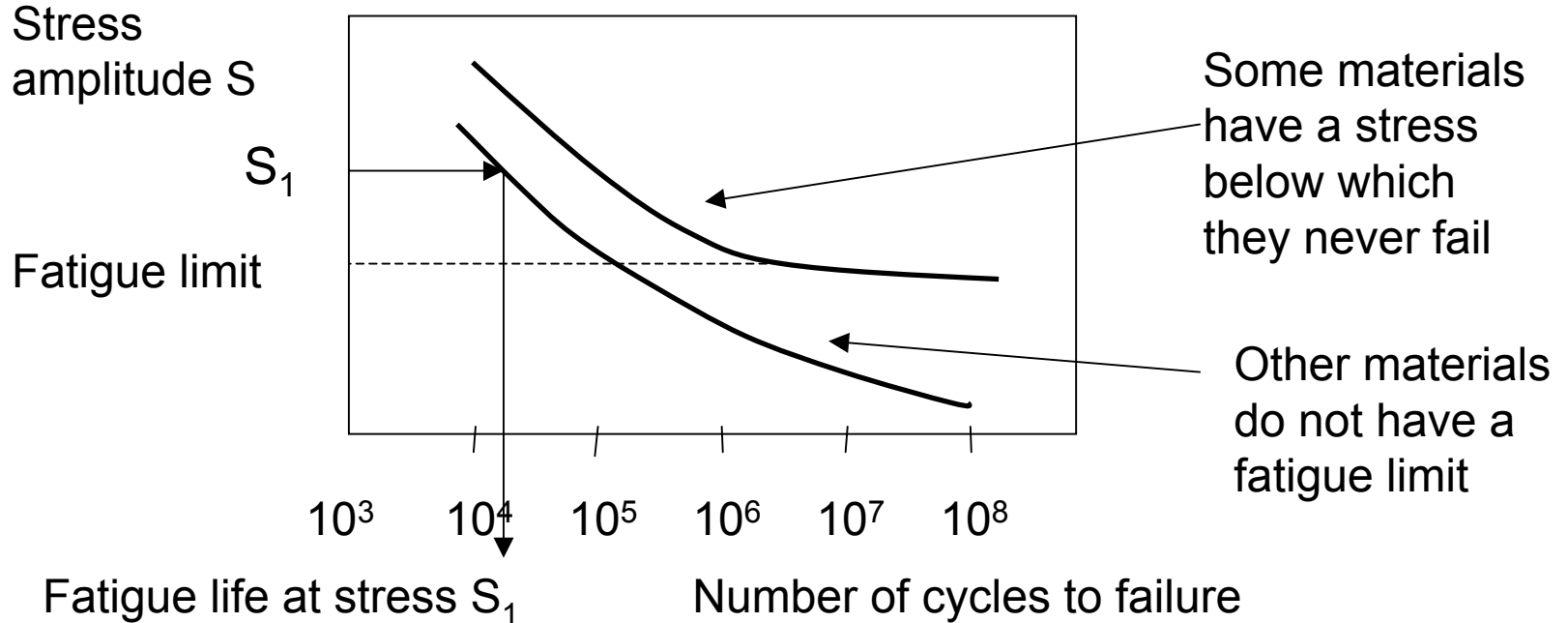
Stress range  $\sigma_r = (\sigma_{\max} - \sigma_{\min})$

Stress ratio  $R = \sigma_{\min} / \sigma_{\max}$



# Fatigue - S/N Curves

Stress vs Number of cycles to failure



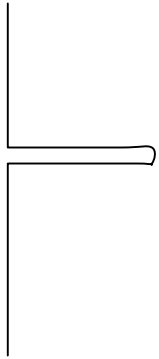
# Fatigue Mechanism

---

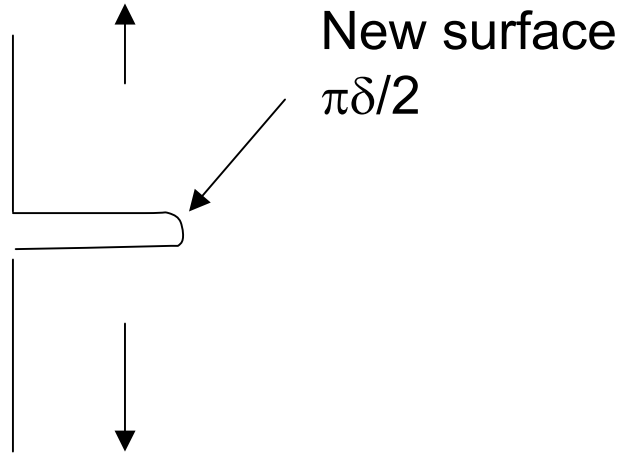
- Initiation –
  - formation of micro-crack at surface at point of stress concentration
- Propagation – advances incrementally every cycle
  - Stage I - slow propagation through planes of high shear stress
  - Stage II – faster propagation along direction perpendicular to load
- Final failure – rapid fracture once crack has reached critical size
- At low stress levels large amount of fatigue life utilised in crack initiation

# How cracks grow

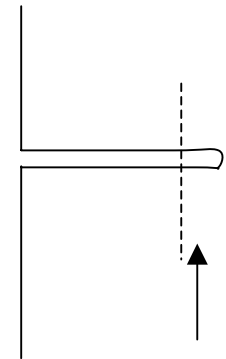
---



Crack at  
zero stress



Apply maximum  
stress – crack opens

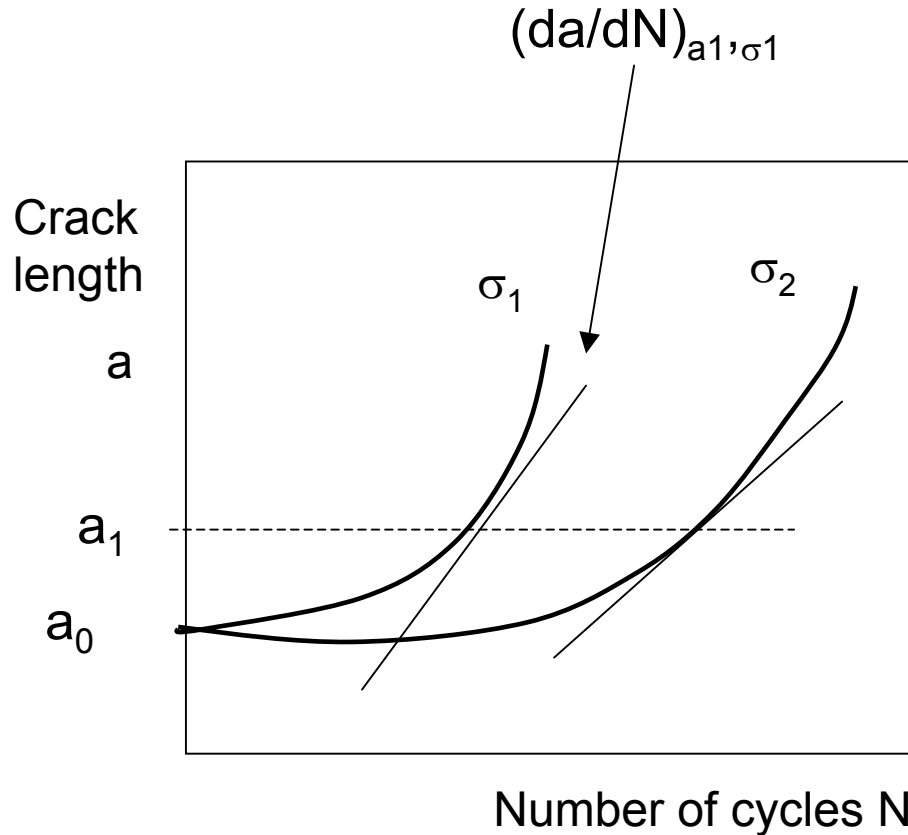


Crack at  
zero stress

Crack extended  
 $\pi\delta/2$

# Rate of Crack Growth

---

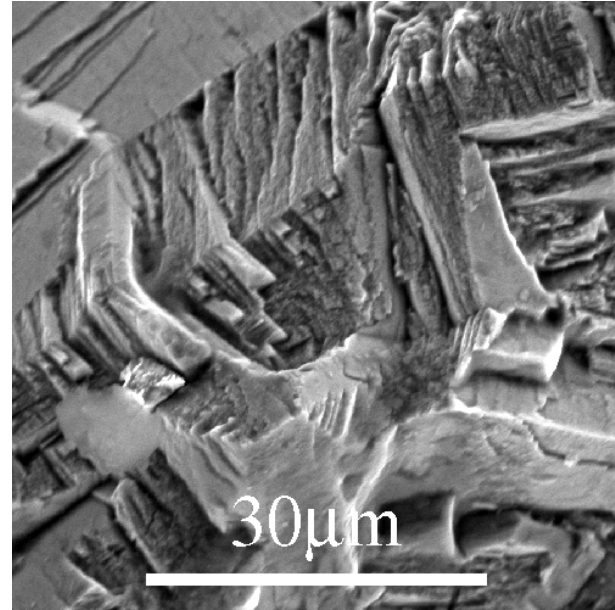
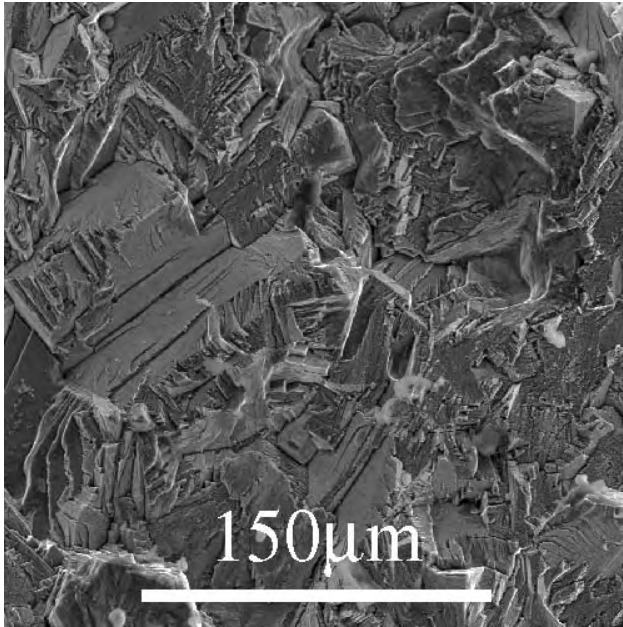


$$da/dN = A(\Delta K)^m \quad m=1-6$$

$$\Delta K = K_{\max} - K_{\min} = Y(\sigma_{\max} - \sigma_{\min})(\pi a)^{1/2}$$

# Fatigue failure

---



Fatigue failure in Ni superalloy

Fatigue failure brittle-like in nature – even in normally ductile materials

The fracture surface is perpendicular to the direction of applied stress

# Strengthening against fatigue

---

Eliminate sharp corners to reduce stress concentration

Avoid scratches or tears on surface due to manufacture

Reduce residual stresses due to processing

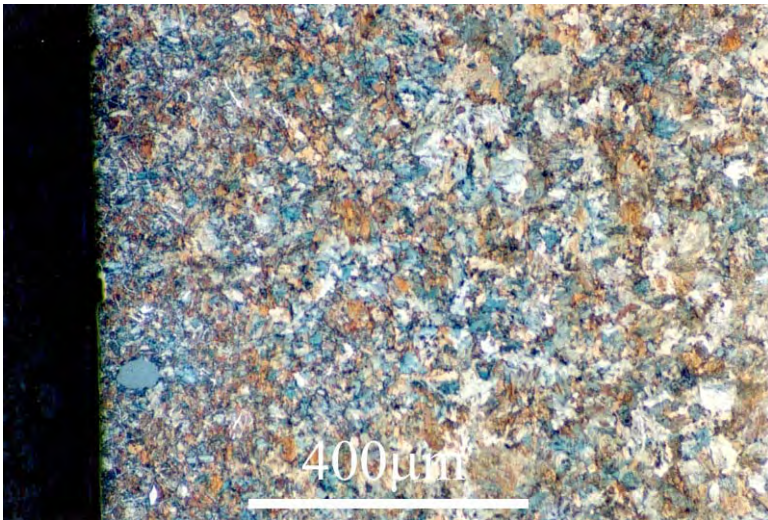
Surface Treatment – impose residual surface stress

Case hardening – surface exposed to carbonaceous or nitrogenous atmosphere at high T

C or N rich outer layer introduced by atomic diffusion

Fe C .07 Mn 2.3%

Carburised at 950 C



# Environmental Effects

---

- Thermal fatigue
  - Fluctuating thermal stresses due to fluctuating temperature under constrained conditions
- Corrosion fatigue
  - Simultaneous action of cyclic stresses and corrosive environments
  - Small pits form as a result of chemical reaction and act as crack nucleation sites
  - Crack propagation enhanced as a result of chemical attack

# Creep

---

Time dependent permanent deformation under a constant stress

Slow replacement of elastic strain by plastic strain

High temperature  $T > 0.4 T_m$  for metals

Polymers especially sensitive to creep deformation

Often the limiting factor in the lifetime of a part



# Creep Mechanisms

---

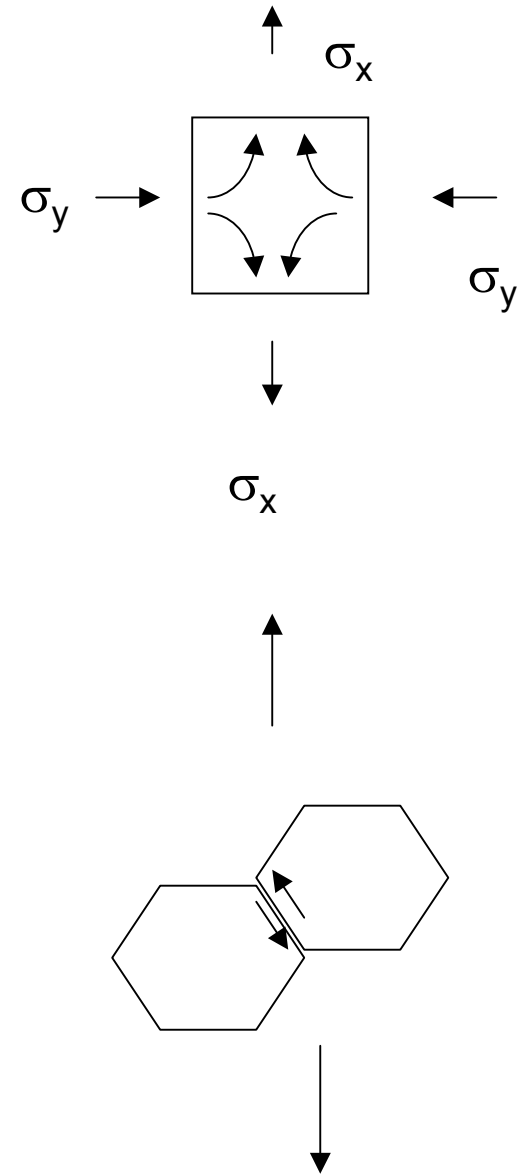
Stress induced vacancy diffusion

Grain boundary diffusion

Dislocation motion (thermally activated)

Grain boundary sliding (displacement of scratch lines during creep testing)

Polymers – viscous flow



# Creep Rate for Vacancy Diffusion

---

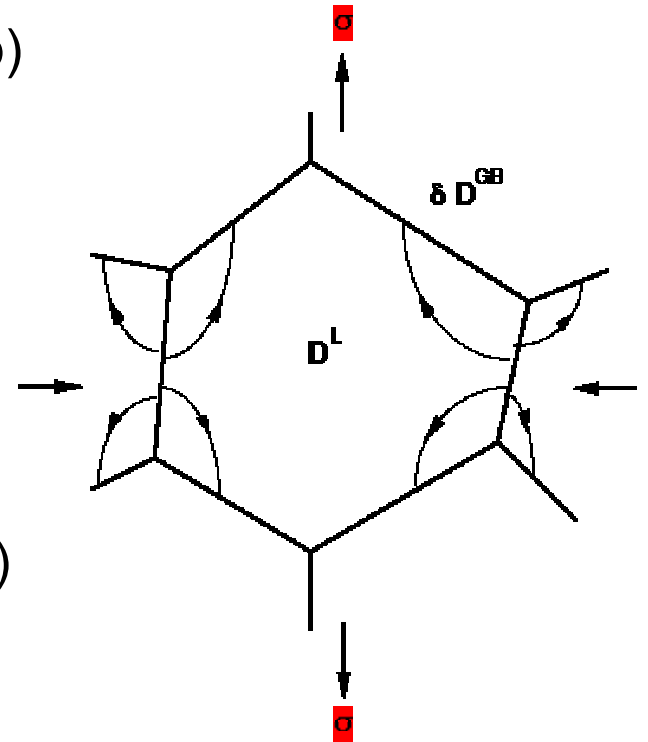
Bulk Diffusion (Nabarro-Herring Creep)

$$d\varepsilon/dt \propto (D_L/kT)(\sigma)(1/d^2)$$

Grain Boundary Diffusion (Coble Creep)

$$d\varepsilon/dt \propto (D_{GB}/kT)(\sigma)(\delta/d)(1/d^2)$$

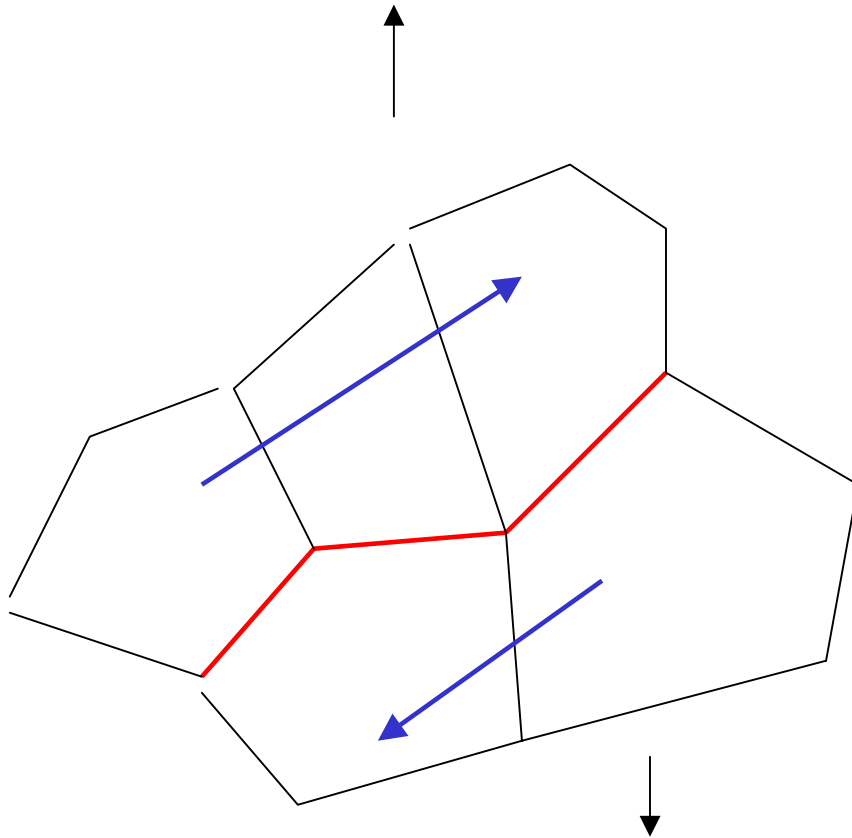
$d$  is grain size



# Grain Boundary Sliding

---

- Flux of matter from zones of compression to zones of dilation leads to smoothing of grain corners
- Leads to the formation of cavities



# Dislocation Motion

---

- Dislocation glide as with plastic deformation
  - Stress less than critical shear stress for motion
  - Dislocation motion is thermally activated
- Dislocation climb
  - Vacancies diffuse to core cause movement out of the glide plane
- Work Hardening
  - Dislocations pile up and repel each other
  - Climb results in recovery from work hardening

# Creep Failure

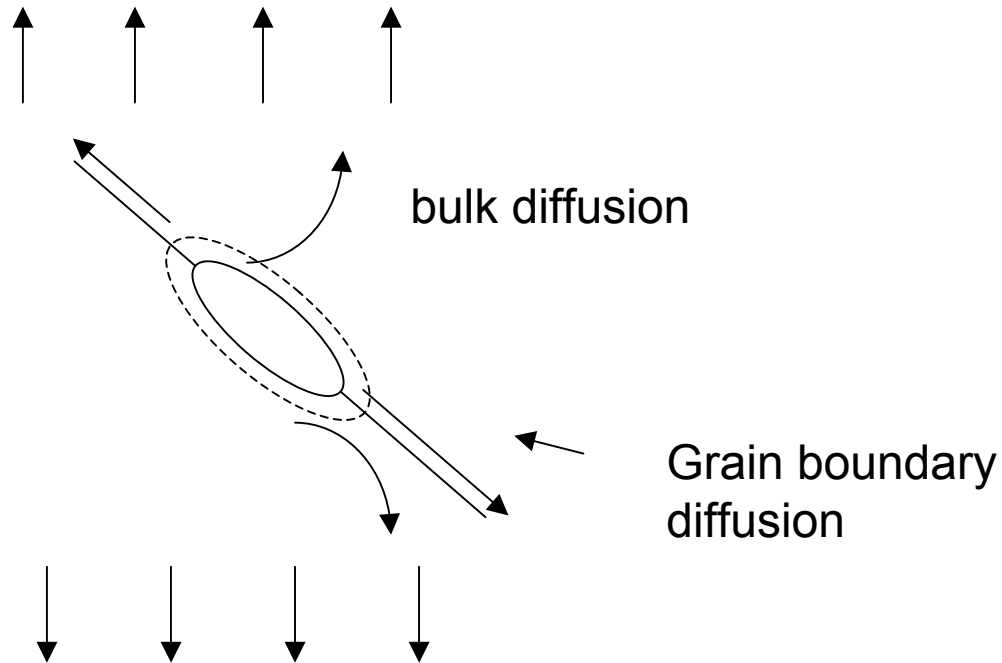
---

Internal cavities accumulate at grain boundaries

Cavities grow and aggregate

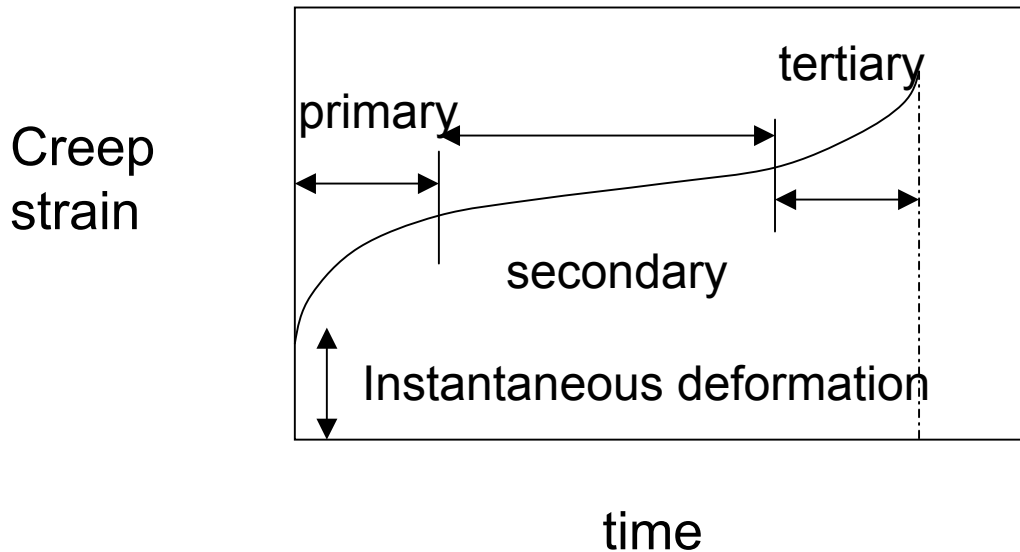
Eventual failure

Growth of voids during creep



# Creep Curve

---



## Primary

Decreasing strain rate (work hardening)

## Secondary

Constant strain rate

## Tertiary

Increasing strain rate

Creep damage accumulates

# Steady State Creep Rate

---

$$d\varepsilon/dt = K_1 \sigma^n$$

$K_1$  and  $n$  are material constants

$n=1$  at low stress

$n=3-8$  at high stress

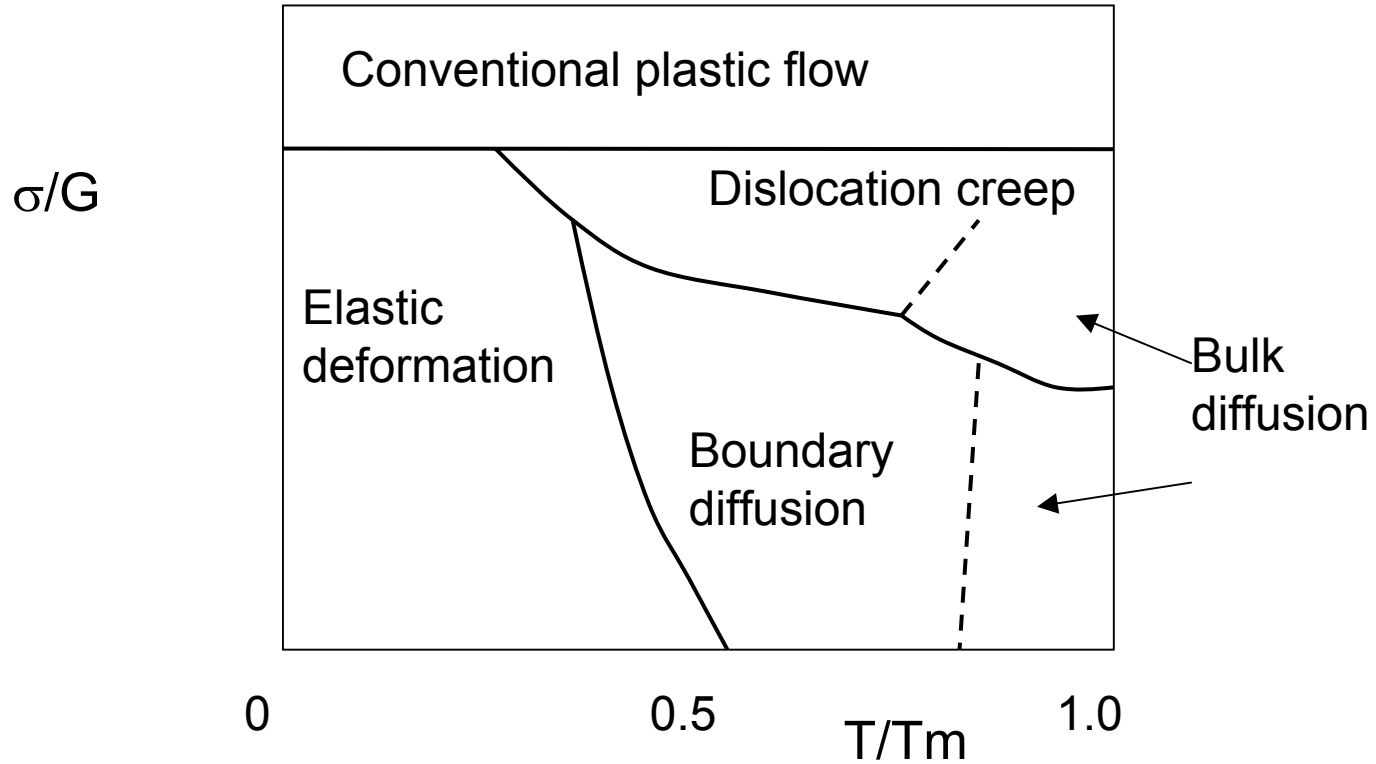
Including temperature

$$d\varepsilon/dt = K_2 \sigma^n \exp(-Q_c/kT)$$

$K_2$ ,  $Q_c$  and  $n$  are material constants

$Q_c$  is the activation energy for creep

# Deformation diagrams





# Strengthening against creep

---

Choose material with high  $T_m$

Choose material with large lattice resistance to dislocation motion

Large grain size to minimize grain boundary diffusion

Precipitates at grain boundaries to prevent sliding

Directional solidification – produced highly elongated grains

Precipitates and impurities restrict dislocation glide



Ni, Al, Re, W, Ta, Cr, Co, Ru (Ni-Superalloy)

The material is in single crystal form for turbine blade application, the operation temperature could easily reach above  $1200^{\circ}\text{C}$  during flight cycles. So, the alloy needs to have good high temperature creep resistance and microstructural stability

# Failure - Summary

---

- Failure under tensile loading
  - Very ductile – necks down to a point
  - Moderately ductile – cup and cone type fracture surface with spherical dimples
  - Brittle – fracture surface shiny and granular perpendicular to applied load. Stress concentration at flaws decrease strength
- Fatigue – failure under cyclic loading
  - S/N curves
- Creep – deformation at high temperature under low stress
  - Eventual failure due to void growth

# Corrosion

---

## What is corrosion?

The environmental degradation of materials –examples

- Rusting of an iron pipe
- Patina of a bronze statue
- Pitting of stainless steel

## Why should we care about corrosion?

- Cost - around 5% of an industrialized nation's income is spent on corrosion prevention or maintenance
- Safety – airplanes, boilers, bridges, pressure vessels
- Conservation of resources – energy wasted replacing corroded materials

# Aloha 737 Accident

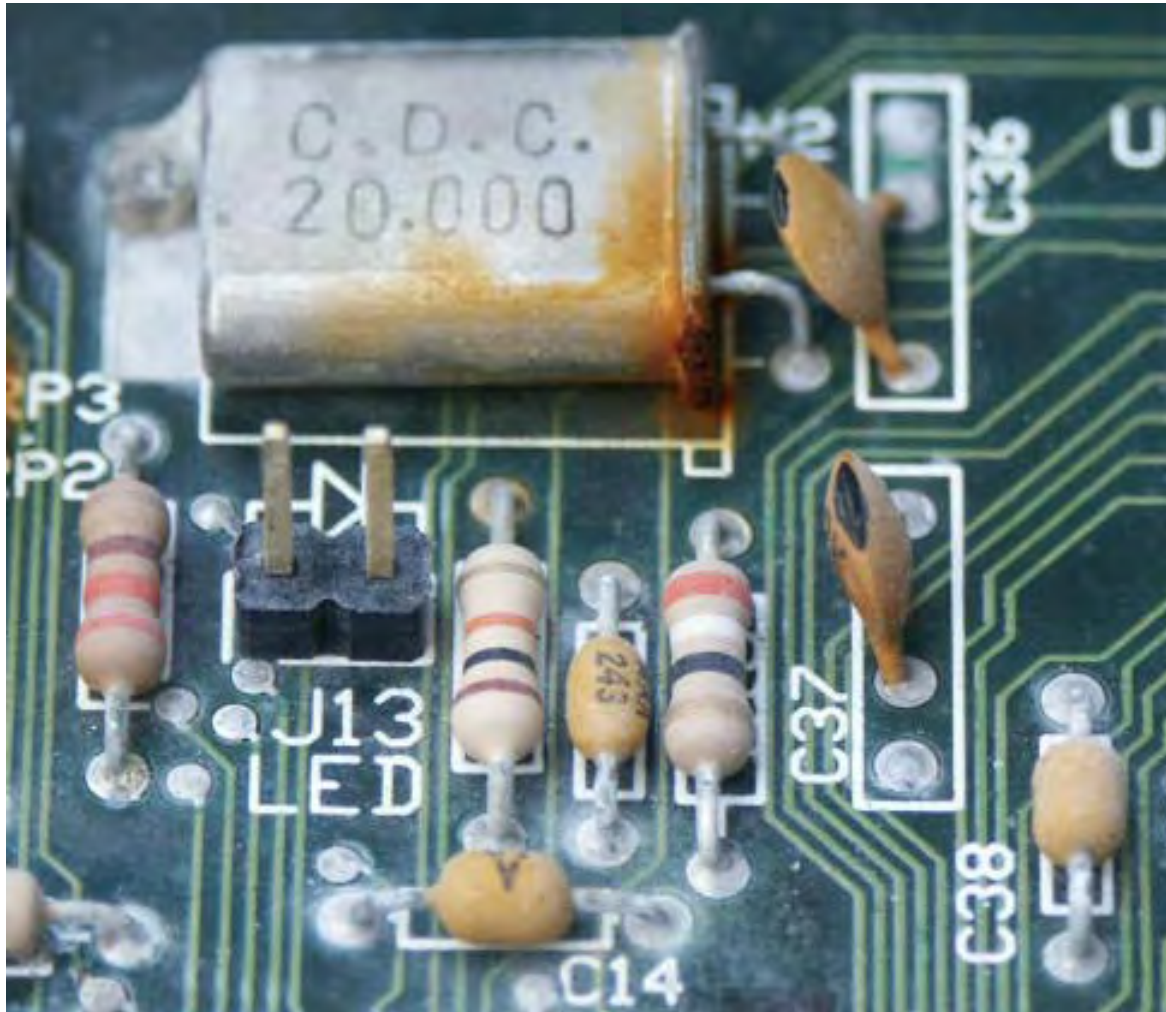
---



[www.corrosion-doctors.org](http://www.corrosion-doctors.org)

# Electronics

---



# Car Corrosion

---



# Dry Corrosion - Oxidation

---

Mainly concerned with metals

Oxidation reaction:  $M + O = MO$

If energy for reaction is positive oxidation will not occur

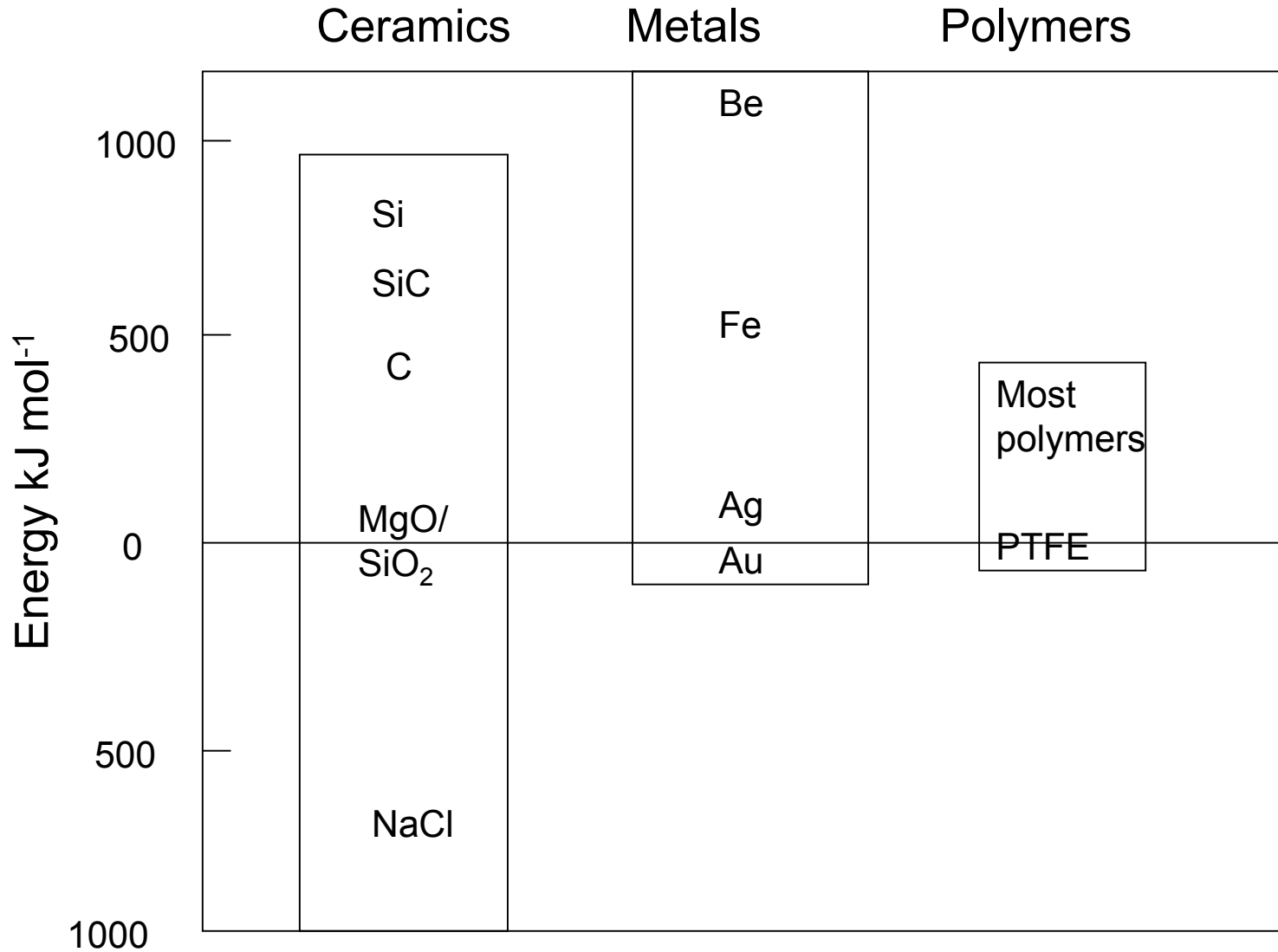
eg Au, NaCl

If energy is negative oxidation may occur

Eg Zn, Fe Cu

# Energies of Oxide Formation

---





# Rate of Oxidation

---

The rate of oxidation is not correlated with the energy of oxide formation. Why?

Because the oxide often forms a protective scale on the surface which acts as a barrier to oxidation

Experimentally find either linear or parabolic increase in mass ( $\Delta m$ ) with time

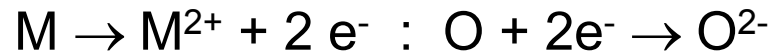
Linear  $\Delta m = k_l t$

Parabolic  $(\Delta m)^2 = k_p t$

$k_l$  and  $k_p$  follow Arrhenius' law

Rate of oxidation increases exponentially with T

# Mechanisms



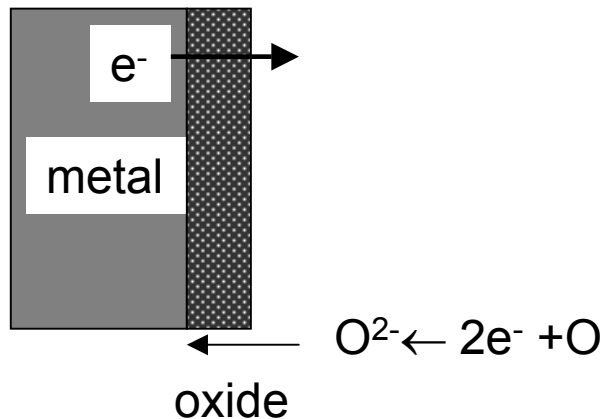
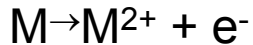
Initial reaction – oxide forms on metal surface

Electrons diffuse through scale to ionise oxygen

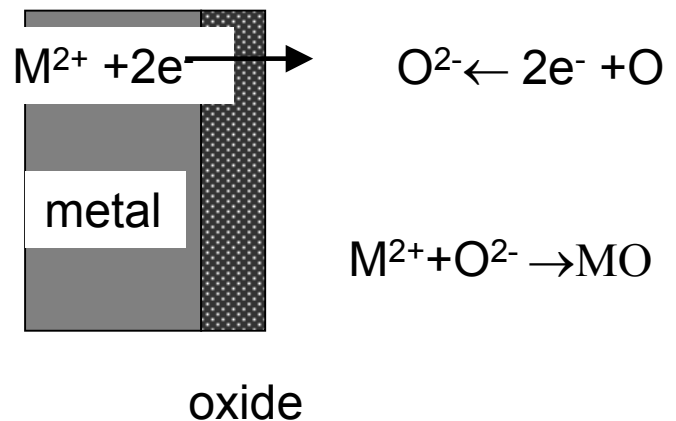
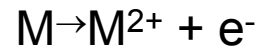
O ions diffuse to form scale at metal surface

Electrons and metal ions diffuse through scale

Oxide forms on scale surface



Case 1



Case 2

# Parabolic Law

---

Fick's Law

$$j = -D \frac{dC}{dx} = -DC/x$$

Integrating

$$x^2 = k_p t$$

$$k_p \propto CD_0 \exp(-Q/kT)$$

Rate of oxidation depends on diffusion coefficient

Electrically insulating scales make very good protective films (eg  $\text{Al}_2\text{O}_3$ )

# Linear oxidation

---

Some scales do not adhere well to metal surface

The oxide may be volatile and evaporate from surface

There may be large volume mismatch between oxide and metal leading to cracking

The absence of a protective scale leads to linear oxidation

# Wet Corrosion

---

The rate of corrosion increases by several orders of magnitude in the presence of water

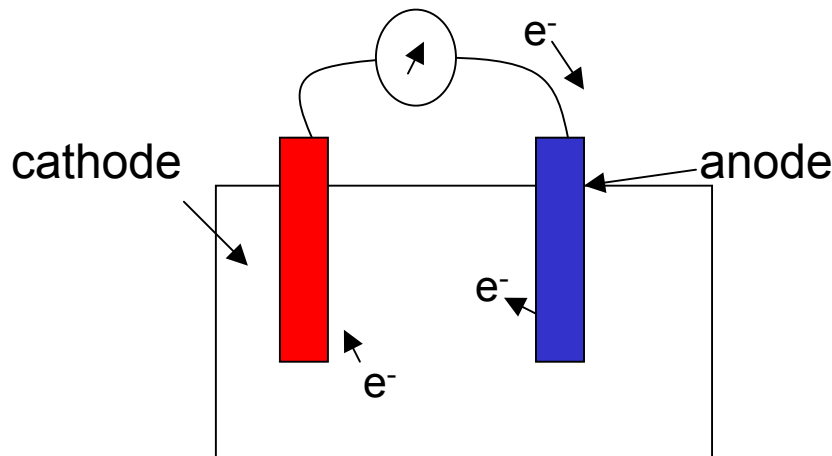
# Electrochemistry

---

Electrolyte – solution capable of conducting electricity via ions

Anode – electrode whose atoms lose electrons from the external circuit

Cathode – electrode whose atoms gain electrons from the external circuit



Single metal  
can have both  
anodic and  
cathodic areas

# Corrosion – Electrochemistry

---

Oxidation reaction  $M \rightarrow M^{n+} + ne^{-}$

Eg  $Fe \rightarrow Fe^{2+} + 2e^{-}$

Oxidation takes place at the anode

Reduction reaction  $X^{n+} + ne^{-} \rightarrow X$

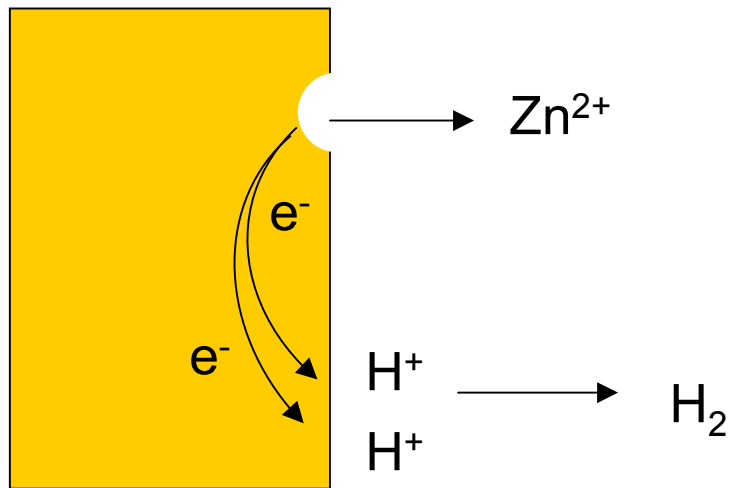
Eg  $2H^{+} + 2e^{-} \rightarrow H_2$

$O_2 + 4H^{+} + 4e^{-} \rightarrow 2H_2O$

Reduction takes place at the cathode

# Corrosion of Zn in Acid Solution

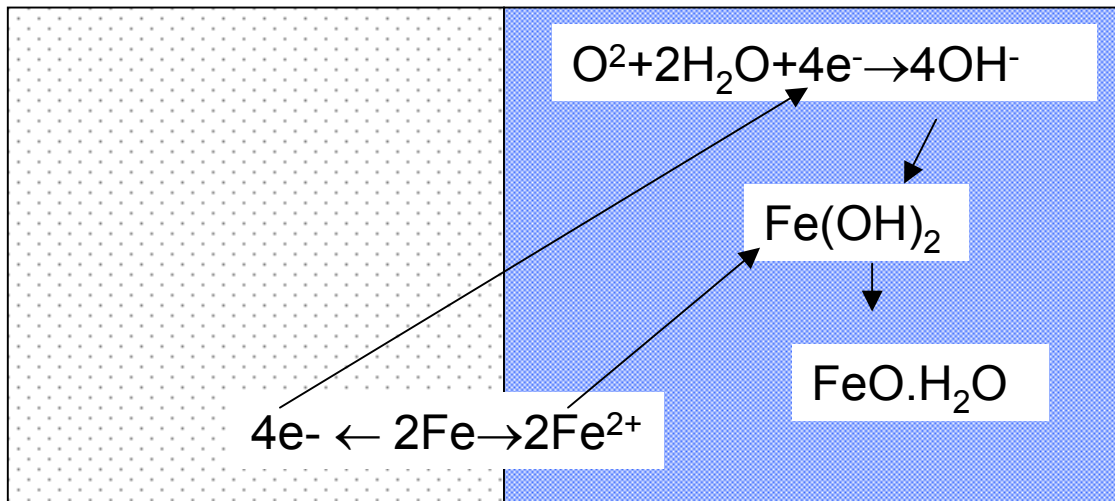
---





# Rusting of Fe

---



# Electrochemical potential - EMF Series

---

Measures tendency for materials to gain or lose electrons (H defined as zero)

Measured in V



Lower metal oxidizes (loses electrons)

Higher metal reduces (gains electrons)

# Galvanic Series

---

- EMF series was generated under highly idealised conditions and is of limited utility
- The Galvanic series lists the relative reactivities of metals in sea water
- Metal near the top are unreactive
- Metals near the bottom are the most anodic (tend to oxidize)
- No voltages are given

# The Galvanic Series

---

Gold

Silver

Copper

Nickel

Stainless Steel

Iron

Aluminium Alloys

Cadmium

Zinc

Magnesium

# Corrosion Rates

---

Corrosion Penetration Rate

$$\text{CPR} = K W / \rho A t$$

K = constant (depends on units)

W is weight loss in time t

$\rho$  is the density

A is the Area

# Forms of Corrosion

---

- Uniform corrosion
- Stress Corrosion
- Intergranular corrosion
- Pitting
- Galvanic corrosion
- Crevice corrosion

# Uniform Corrosion

---

- Occurs with equivalent intensity over the entire exposed surface
- Examples include general rusting of steel and iron and the tarnishing of silverware
- Easiest form of corrosion to predict and protect against



# Stress Corrosion

---

- Results from combined action of stress and corrosion
- Small cracks form and propagate in the direction perpendicular to the stress
- Failure characteristic of brittle material even if metal is ductile
- Stress may be residual (not applied externally)

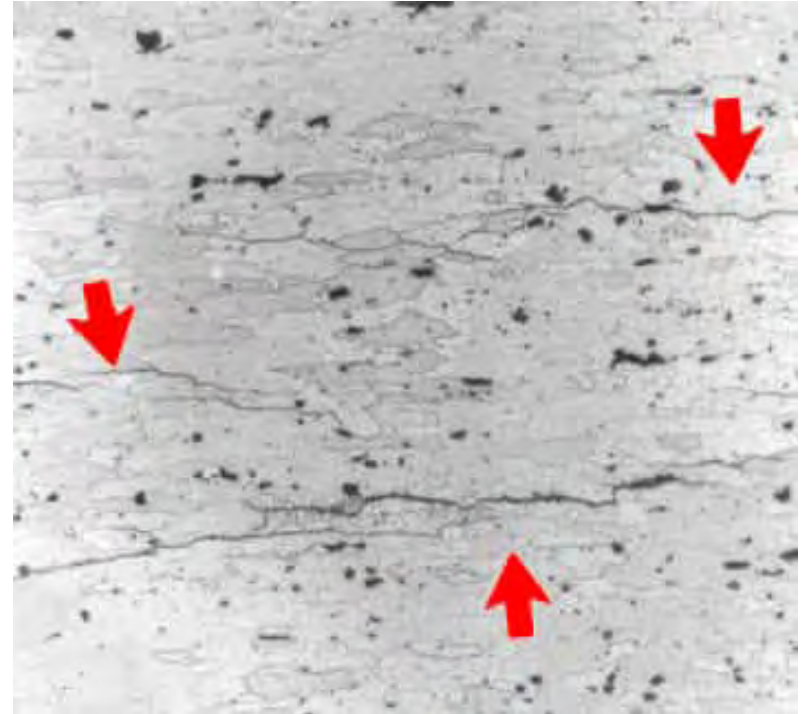




# Intergranular Corrosion

---

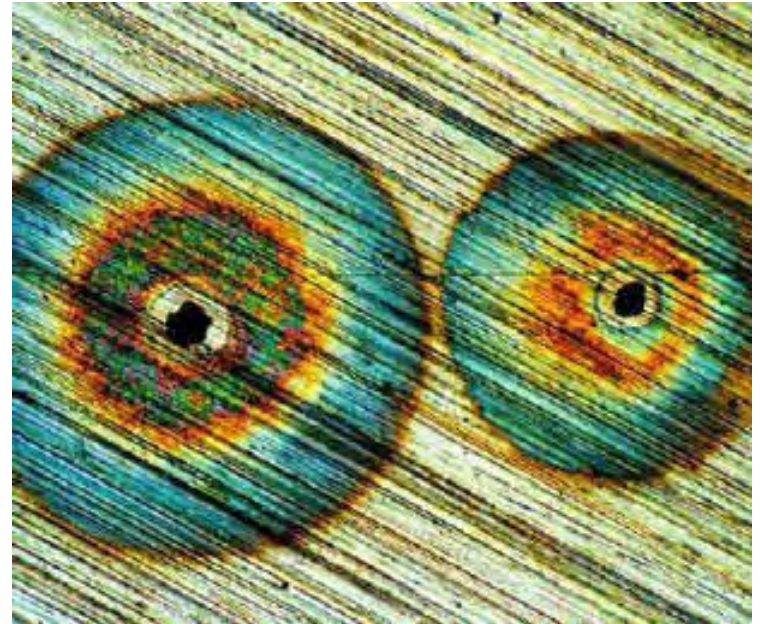
- Occurs preferentially along grain boundaries
- Macroscopic specimen disintegrates along grain boundaries
- Especially prevalent in stainless steels – Cr depleted region around grain boundaries



# Pitting

---

- Small pits or holes form
- Oxidation occurs in the pit with complementary reduction on surface
- Penetrate from top of a horizontal surface in vertical direction
- Initiated at localised surface defect



# Galvanic corrosion

---

- 2 different metals electrically connected in an electrolytic solution
- Galvanic series predicts which metal corrodes faster
- eg Steel soldered to Cu – steel corrodes faster

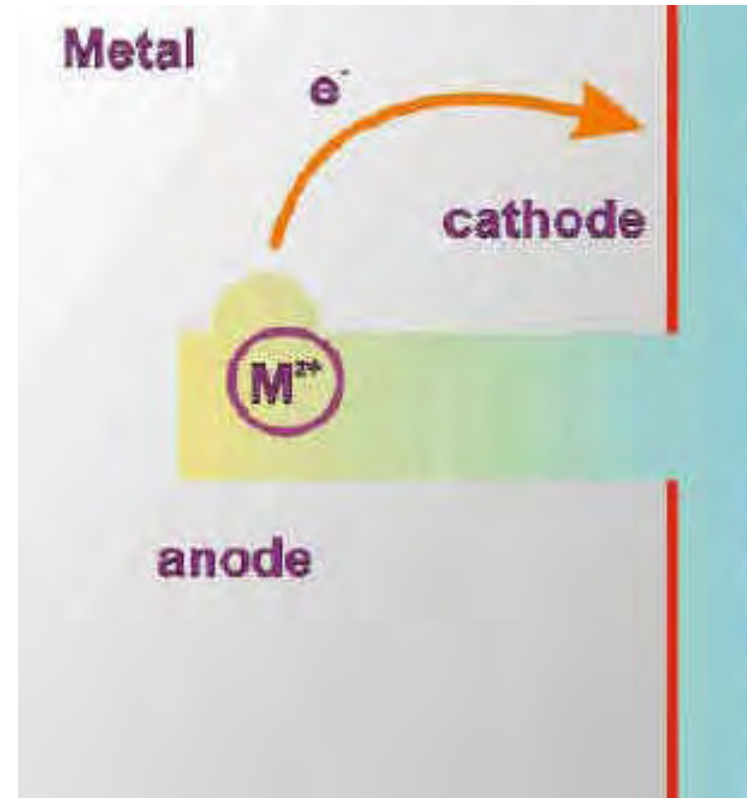


Stainless Steel screw /  
Cadmium plated washer

# Crevice Corrosion

---

- Electrochemical Corrosion may occur because of concentration differences of dissolved ions between 2 regions of same metal
- Crevices or recesses are examples
- Crevice must be wide enough for solution to penetrate but narrow enough for it to be stagnant



# Minimising or preventing corrosion

---

- Use corrosion resistant material
- Remove aggressive species from environment
- Add chemical to inhibit corrosion
- Separate material from environment – paint
- Remove crevices from design
- Use compatible materials
- Use cathodic or sacrificial protection – galvanized steel

# Cathodic Protection

---

- One of the most effective means of corrosion protection
- Involves supplying electrons from an external source making it the cathode
- The oxidized metal (often Mg or Zn) is called the sacrificial anode
- Common example is galvanizing (coating steel with Zn)