

SSC Multi Tasking MODEL PAPER - 1

GENERAL INTELLIGENCE AND REASONING

Directions (Q. Nos. 1-3) In the following questions, select the related letters/word/number from the given alternatives.

- 85 : 42 :: 139 : ?
(a) 68 (b) 69 (c) 70 (d) 67
- AGMS : CIOU :: DJPV : ?
(a) BHNY (b) STUV (c) FLRX (d) MNOP
- CAT : DDY :: BIG : ?
(a) CLL (b) CLM (c) CML (d) CEP

Directions (Q. Nos. 4-5) In the following questions, find the odd number from the given alternatives.

- (a) 80-9 (b) 64-8 (c) 36-6 (d) 49-7
- (a) 111 (b) 242 (c) 551 (d) 383

Directions (Q. Nos. 6-8) In the questions given below, a series is given with one term missing. Choose the correct alternative from the given ones that will complete the series.

- 56, 42, 30, 20, ?, 6
(a) 15 (b) 12 (c) 18 (d) 14
- ASY, BRX, CQW, ?
(a) DVP (b) DPV (c) PDV (d) PQD
- Y, S, N, J, G, ?
(a) F (b) E (c) H (d) I
- If '-' means 'x', x means '+', '+' means \div and \div means '-', then $(15 - 10) \times (130 + 10) \div 50 = ?$
(a) 1800 (b) 113 (c) 2000 (d) 123
- Substitute the correct mathematical symbols in place of * in the following equation
 $16 * 4 * 5 * 14 * 6$
(a) $\div, -, =, \times$ (b) $-, \times, +, =$ (c) $\div, \times, =, +$ (d) $\div, +, =, -$
- Find out the missing number.

8	9	9
6	7	8
9	11	?
39	52	59

- (a) 10 (b) 11 (c) 12 (d) 13
-

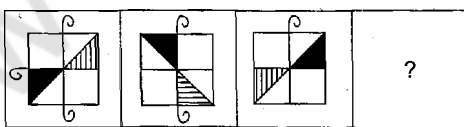
12. Find out the wrong number from the given series. 5, 27, 61, 122, 213, 340, 509
 (a) 27 (b) 61 (c) 122 (d) 509
13. If $2 \times 2 = 16$, $2 \times 3 = 36$, $2 \times 4 = 64$, then $2 \times 6 = ?$
 (a) 72 (b) 80 (c) 96 (d) 144
14. In the following series, the equations are solved on the basis of a certain system. Find out the correct answer for the unsolved equation on that basis.
 $9 \times 8 \times 6 = 896$,
 $7 \times 6 \times 8 = 678$,
 $8 \times 7 \times 5 = ?$
 (a) 875 (b) 785 (c) 578 (d) 758
15. Four persons M, N, O and P are playing cards. M is on the right of N and P is on the left of O. Then, which of the following are partners?
 (a) P and O (b) M and P (c) M and N (d) N and P
16. If 'EDITION' is written as 'IDETNOI', then how is 'MEDICAL' written in that code?
 (a) DEMILAC (b) LACIMED (c) DIEMCAL (d) CADILEM
17. If the letters in 'PRABA' are coded as 27595 and 'THILAK' are encoded 368451, then how can 'BHARATHI' be coded?
 (a) 96575368 (b) 57686535 (c) 96855368 (d) 37536689
18. A father tells his son, "I was three times of your present age when you were born." If the father's present age is 48 yr, how old was the boy 4 yr ago?
 (a) 24 yr (b) 8yr (c) 12 yr (d) 16 yr
19. A and B are brother and sister respectively. C is A's father, D is C's sister and E is D's mother. How is B related to E?
 (a) Grand-daughter (b) Great-grand-daughter
 (c) Aunt (d) Daughter

Direction (Q. No. 20) Two statements are given followed by two Conclusions I and II. You have to consider the two statements to be true even if they seem to be at variance from commonly known facts. You have to decide which of the given conclusions, if any, follow from the given statements.

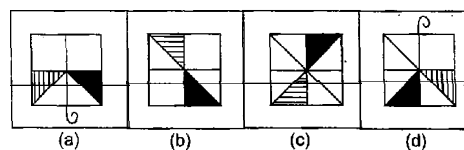
20. Statements All English movies are violent. Some people like watching English movies. Conclusions
 I. All people watching English movies like violence.
 II. All People who like violence watch English movies.
 (a) Only I follows (b) Only II follows
 (c) Neither I nor II follows (d) Both I and II follow

Direction (Q. Nos. 21) Select the missing figure from the given responses.

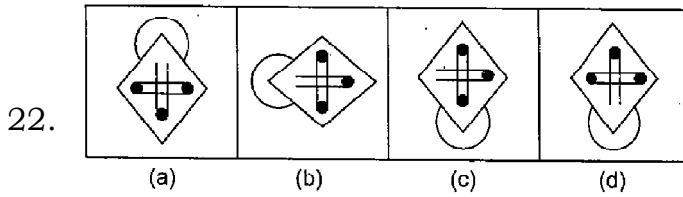
21. Question Figures



Answer Figures

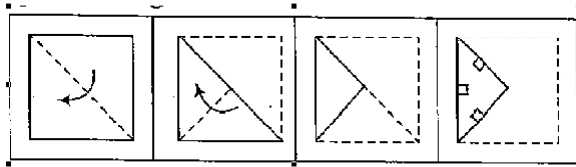


Direction (Q. No. 22) Find the odd figure from the given alternatives.

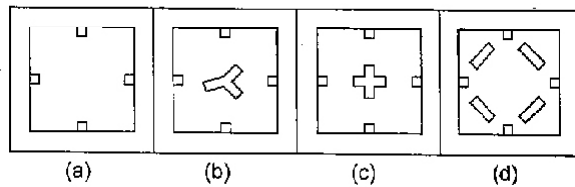


23. A paper is folded and cut as shown in the given question figures. When opened which of the four answer figures will it resemble?

Question Figures

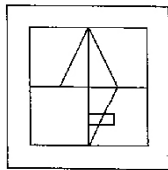


Answer Figures

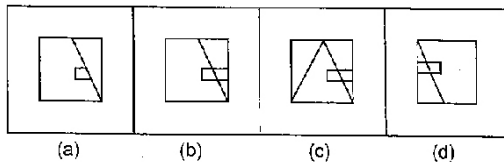


24. **Direction (Q. No. 24)** Which answer figure will complete the question figure?

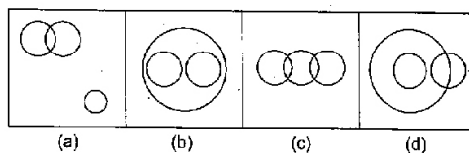
Question Figure



Answer Figures



25. Which of the following figures represents the relationship between Building material, Cement and Wood?



Numerical Aptitude

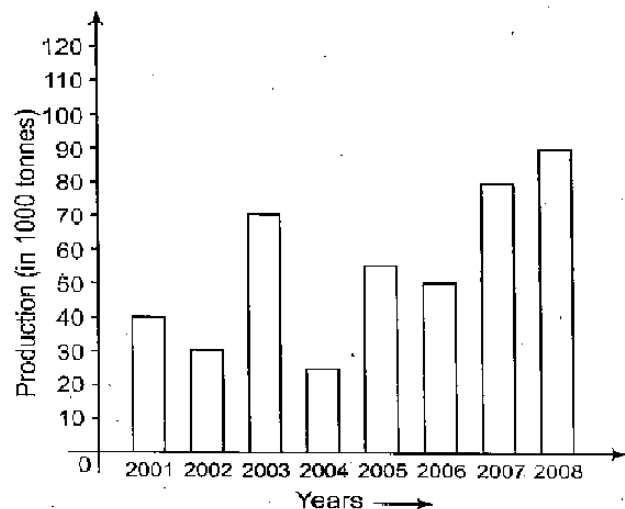
26. The units digit of the expression $25^{6251} + 36^{528} + 73^{54}$ is
(a) 6 (b) 5 (c) 4 (d) 0
27. Simplify
$$\frac{\frac{1}{3} + \frac{1}{4} \left(\frac{5}{2} - \frac{1}{2} \right)}{1\frac{2}{3} \text{ of } \frac{3}{4} - \frac{3}{4} \text{ of } \frac{4}{5}}$$

(a) $\frac{37}{78}$ (b) $\frac{37}{13}$ (c) $\frac{74}{78}$ (d) $\frac{50}{39}$
28. The sum of the squares of 3 consecutive positive numbers is 365. The sum of the numbers is
(a) 30 (b) 33 (c) 36 (d) 45
29. In a division sum, the divisor is 10 times the quotient and 5 times the remainder. If the remainder is 46, then the dividend is
(a) 4236 (b) 4306 (c) 4336 (d) 5336
30. A is thrice as good a workman as B and therefore is able to finish a job in 40 days less than B. Working together, they can do it in
(a) 14 days (b) 13 days (c) 20 days (d) 15 days
31. The LCM of two numbers is 4 times their HCF. The sum of LCM and HCF is 125. If one of the numbers is 100, then the other number is
(a) 5 (b) 25 (c) 100 (d) 125
32. $\frac{1}{3-\sqrt{8}} - \frac{1}{\sqrt{8}-\sqrt{7}} + \frac{1}{\sqrt{7}-\sqrt{6}} - \frac{1}{\sqrt{6}-\sqrt{5}} + \frac{1}{\sqrt{5}-2}$ is equal to
(a) 5 (b) 3 (c) 1 (d) 0
33. A and B can do a piece of work in 8 days, B and C can do it in 24 days, while C and A can do it in $8\frac{4}{7}$ days. In how many days can C do it alone?
(a) 60 (b) 40 (c) 30 (d) 10
34. A sphere and a cube have equal surface areas. The ratio of the volume of the sphere to that of the cube is
(a) $\sqrt{\pi} : \sqrt{6}$ (b) $\sqrt{6} : \sqrt{\pi}$ (c) $\sqrt{2} : \sqrt{\pi}$ (d) $\sqrt{\pi} : \sqrt{3}$
35. The difference between a discount of 35% and two successive discounts of 20% on a certain bill was Rs.22. The amount of the bill was
(a) Rs.200 (b) Rs.220 (c) Rs.1100 (d) Rs.2200
36. In measuring the sides of a rectangle, there is an excess of 5% on one side and 2% deficit on the other. Then, the error per cent in the area is
(a) 3.3 (b) 3 (c) 2.9 (d) 2.7
37. An equilateral triangle and a regular hexagon have the same perimeter. The ratio of the area of the triangle to that of the hexagon is
(a) 3:2 (b) 2 : 3 (c) 1 : 2 (d) 1 : 4
38. The average of three numbers is 135. The largest number is 195 and the difference between the other two is 20. The smallest number is
(a) 65 (b) 95 (c) 105 (d) 115
-

39. If I purchased 11 books for Rs.100 and sold 10 books for Rs.110, the percentage of profit per book sold is
 (a) 10 (b) 11.5 (c) 17.3 (d) 21
40. Ratio between the monthly incomes of A and B is 9 : 8 and the ratio between their expenditures is 8 : 7. If they save Rs.500 each, find A's monthly income.
 (a) Rs.3500 (b) Rs.4000 (c) Rs.4500 (d) Rs.5000
41. If $x : y = 3 : 4$, then the value of $\frac{5x-2y}{7x+2y}$.
 (a) $\frac{7}{25}$ (b) $\frac{7}{23}$ (c) $\frac{7}{29}$ (d) $\frac{7}{17}$
42. In a certain time, the ratio of a certain principle and the simple interest obtained from it are in the ratio 10 : 3 at 10% interest per annum. The number of years the money was invested is
 (a) 1 (b) 3 (c) 5 (d) 7
43. A cloth merchant sold half of his cloth at 40% profit, half of remaining at 40% loss and the rest was sold at the cost price. In the total transaction, his gain or loss will be
 (a) 20% gain (b) 25% loss (c) 10% gain (d) 15% loss
44. In an examination, 1100 boys and 900 girls appeared. 50% of the boys and 40% of the girls passed the examination. The percentage of candidates who failed is
 (a) 45 (b) 45.5 (c) 50 (d) 54.5
45. When the price of cloth was reduced by 25%, the quantity of cloth sold increased by 20%. What was the effect on gross receipt of the shop?
 (a) 5% increase (b) 5% decrease
 (c) 10% increase (d) 10% decrease
46. Walking at the rate of 4 km an hour, a man covers a certain distance in 3 h 45 min. If he covers the same distance on cycle, cycling at the rate of 16.5 km/h, the time taken by him ?
 (a) 55.45 min (b) 54.55 min (c) 55.44 min (d) 45.55 min

Direction (Q.Nos. 47-50) Study the following graph and answer the questions given below.

Production of salt by a company
 (in 1000 tonnes) over the Years



-
47. What was the percentage increase in production of salt in 2008 compared to that of 2001?
(a) 55.5 (b) 125 (c) 150 (d) 220
48. In how many of the given years was production of salt more than the average production of the given years?
(a) 1 (b) 2 (c) 3 (d) 4
49. The average production of 2004 and 2005 was exactly equal to the average production of which of the following pairs of years?
(a) 2006, 2007 (b) 2005, 2006 (c) 2002, 2006 (d) 2001, 2005
50. What was the percentage decline in the production of salt from 2003 to 2004?
(a) 64.2 (b) 180 (c) 62.4 (d) 107

General English

Directions (Q.Nos. 51-55) In the questions given below, some of the sentences have errors and some are correct. Find out which part of a sentence has an error and corresponding to the appropriate answer (a), (b) and (c). If a sentence is free from errors, corresponding to answer (d).

51. It was in 2006/(a) that we first flew /(b) to the United States./ (c) No error (d)
52. The children's dog/(a) slept quietly/(b) in their uncle's house./ (c) No error (d)
53. When Anand reached the village,/(a) he found that/(b) reports about him preceded him./ (c) No error (d)
54. Our success or our failure/(a) largely depend/(b) upon our actions,/(c) No error (d)
55. The poor man/(a) poisoned him/(b) and his own children./ (c) No error (d)

Directions (Q.Nos. 56-60) In the questions given below, sentence are given with blanks to filled in with an appropriate word(s). Four alternatives are suggested for each question. Choose the correct alternative out of the four.

56. It was said of Akbar that he rarely.....more than three hours a day.
(a) sleeps (b) is sleeping (c) had slept (d) slept
57. As the bare mountains turned green, the people found.....looking forward to spring.
(a) they (b) them (c) their (d) themselves
58. We must help to the people hit by the cyclone.
(a) contribute (b) summon (c) impart (d) render
59. The metals and minerals sector currently highly volatile.
(a) are (b) is (c) was (d) were
60. We should not mix with those people who have anreputation
(a) unsavoury (b) unsteady (c) unsafe (d) unsanctified

Directions (Q. Nos. 61-65) In these questions, out of the four alternatives, choose the one which best expresses the meaning of the given word.

61. discriminate
(a) compare (b) distinguish (c) comprehend (d) connect
62. appear
(a) see (b) allow (c) seem (d) enter
63. cease
(a) stop (b) lapse (c) close (d) arrest
-

-
64. liability
(a) debt (b) debit (c) asset (d) credit
65. integration
(a) symmetry (b) unity (c) coordination (d) compromise
- Directions (Q. Nos. 66-70)** In the given questions, choose the word opposite in meaning to the given word.
66. neat
(a) sloppy (b) fragrant (c) spruce (d) orderly
67. wicked
(a) cunning (b) good (c) tricky (d) crooked
68. block
(a) clean (b) ease (c) cure (d) clear
69. vanity
(a) honesty (b) truthfulness (c) modesty (d) decency
70. negligent
(a) inattentive (b) imprudent (c) insignificant (d) careful
- Directions (Q. Nos. 71-75)** In these questions, four alternatives are given for the underlined idiom/phrase. Choose the alternative which best expresses the meaning of the given idiom/phrase.
71. Unless you grease his palms he will not do your work,
(a) talk to him (b) flatter him (c) beat him (d) bribe him
72. The police closed the book on the murder case.
(a) solved the case of (b) stopped working on
(c) handed the case over to another agency (d) refused to take up
73. His arguments cut no ice with me.
(a) had no influence on me (b) did not hurt me
(c) did not benefit me (d) did not make me proud
74. There was a job for me to cut my teeth on.
(a) to gain experience (b) to try
(c) to sharpen my wits (d) to earn a decent salary
75. The carrot and stick policy pays dividends in every organisation.
(a) fair and foul (b) continuous vigilance
(c) democratic (d) reward and punishment
- Directions (Q. Nos. 76-80)** In the given questions, a part of the sentence is underlined. Below are given alternatives to the underlined part at (a), (b) and (c) which may improve the sentence. Choose the correct alternative. In case no improvement is needed, then your answer is (d).
76. The increasing sale of luxuries is an index of the country's prosperity.
(a) appendix (b) pointer (c) mark (d) No improvement
77. When are you starting to write to your friend?
(a) wanting (b) going (c) thinking (d) No improvement
78. If I was you I would not sign the document.
(a) If I have been you (b) If I were you
(c) If I had been you (d) No improvement
79. I prefer to ride than to walk.
(a) ride to walk (b) riding than walking
-

- (c) riding to walking (d) No improvement
80. They were astonished through his failure in the examination.
 (a) from (b) at (c) with (d) No improvement
- Directions** (Q. Nos. 81-85) In the questions given below, out of the four alternatives, choose the one which can be substituted for the given words/sentence.
81. One who intervenes between two or more parties to settle differences
 (a) Neutral (b) Intermediary (c) Judge (d) Connoisseur
82. The absence of law and order
 (a) Rebellion (b) Mutiny (c) Revolt (d) Anarchy
83. A voice that cannot be heard
 (a) Unheard (b) Faint (c) Audible (d) Inaudible
84. High sea waves caused by underwater earthquake
 (a) Tsunami (b) Tornado (c) Hurricane (d) Cyclone
85. To give one's authority to another
 (a) Assign (b) Delegate (c) Represent (d) Designate

Directions (Q. Nos. 86-90) In these questions, groups of four words are given. In each group, one word is correctly spelt. Find the correctly spelt word.

86. (a) Occurence (b) Occurrence (c) Ocurence (d) Occurance
87. (a) Pidistrian (b) Pedistrian (c) Pedestrian (d) Pidestrian
88. (a) Budgetery (b) Bugetary (c) Budgetary (d) Budgetry
89. (a) Embarrassed (b) Embarassed (c) Embarrased (d) Embarased
90. (a) Seperately (b) Separately (c) Seperatley (d) Separatly

Directions (Q. Nos. 91-100) In the following passage, some of the words have been left out. First read the passage over and try to understand what it is about. Then, fill in the blanks with the help of the alternatives given. When Anil passed his final university examination and got his 91 he decided to 92 and invited all his friends to a party to be 93 the following Sunday. He spent most of that Saturday 94 things ready and at 7.40 the first guest arrived. After that a steady 95 of people 96 and Anil was busy chatting to people and introducing them to one another. Anil had a wide 97 of friends and not everyone at the party knew everyone 98. 'A party is always a good way to break the 99 and get people talking', Anil thought. The party soon got going and there was a feeling of relief at the 100 that the examinations were over and that a long summer holiday lay ahead.

91. (a) licence (b) bachelorhood (c) degree (d) diploma
92. (a) celebrate (b) feast (c) entertain (d) commemorate
93. (a) planned (b) celebrated (c) offered (d) held
94. (a) preparing (b) putting (c) getting (d) doing
95. (a) stream (b) current (c) river (d) movement
96. (a) turned out (b) turned up (c) turned in (d) turned down
97. (a) number (b) group (c) circle (d) round
98. (a) else (b) other (c) different (d) person
99. (a) silence (b) atmosphere (c) monotony (d) ice
100. (a) subject (b) point (c) fact (d) matter

General Awareness

101. Which of the following countries are connected by the Palk Strait?
(a) India and Sri Lanka (b) North Korea and South Korea
(c) Pakistan and China (d) Britain and France
102. Match the following
1. Hazaribagh (a) Coal
2. Neyveli (b) Iron
3. Jharia (c) Lignite
4. Rourkela (d) Mica
(a) 1c, 2d, 3a, 4b (b) 1d, 2c, 3a, 4b (c) 1a, 2b, 3c, 4d (d) 1d, 2c, 3b, 4a
103. What is the minimum percentage of votes a political party must get to acquire the status of a registered party?
(a) 1% (b) 2% (c) 3% (d) 4%
104. The highest waterfall of India is
(a) Shimsha falls (b) Hogenakkal falls (c) Courtallam falls
(d) Jog falls
105. Which state is rich in jute?
(a) West Bengal (b) Tamil Nadu (c) Kerala (d) Odisha
106. Money supply is governed by the
(a) Planning Commission (b) Finance Commission
(c) Reserve Bank of India (d) Commercial Banks
107. The headquarters of WTO is at
(a) New York (b) Doha (c) Uruguay (d) Geneva
108. Which state is called the 'Rice Bowl' of India?
(a) Andhra Pradesh (b) Tamil Nadu
(c) Kerala (d) Karnataka
109. Who estimated the National Income for the first time in India?
(a) Mahalanobis (b) Dadabhai Naoroji
(c) VKRV Rao (d) Sardar Patel
110. Economic development of a country depends on
(a) Natural resources (b) Capital formation
(c) Size of the market (d) All of the above
111. National Income is generated from
(a) any money-making activity (b) any laborious activity
(c) any profit-making activity (d) any productive activity
112. Name the 'Political Guru' of Mahatma Gandhi.
(a) Gopalakrishna Gokhale (b) Bal Gangadhar Tilak
(c) Aurobindo Ghosh (d) Lala Lajpat Rai
113. Arrange the following Magadhan dynasties in chronological order
I. Nandas
II. Sisunagas
III. Mauryas
IV. Haryankas
(a) IV, II, III and I (b) II, I, IV and III (c) IV, II, I and III (d) III, I, IV and II
-

-
114. The term of office of the Comptroller and Auditor General of India is
(a) 3yr (b) 4yr (c) 5yr (d) 6yr
115. Who was the first Chief Election Commissioner of India?
(a) GV Mavlankar (b) T Swaminathan (c) KVKSundaram
(d) SukumarSen
116. What is the retirement age for a Supreme Court Judge? -
(a) 62 yr (b) 65 yr (c) 68 yr (d) 70 yr
117. Who propounded the Panchsheel Principles?
(a) Mahatma Gandhi (b) Lord Buddha
(c) Pandit Jawahar Lal Nehru (d) Swami Dayanand Saraswati
118. On April 12, 1994 Subhash Chandra Bose hoisted the INA Flag in a town. In which State/Union Territory is that town now?
(a) Andaman and Nicobar Islands (b) Tripura
(c) Manipur (d) Mizoram
119. Which one of the following is known as the 'immovable property' in the cell?
(a) Carbohydrate (b) Fat (c) Protein (d) Nucleic acid
120. Water from soil enters into the root hairs owing to
(a) Atmospheric pressure (b) Capillary pressure
(c) Root pressure (d) Osmotic pressure
121. What is meant by a 'pir' in the Sufi tradition?
(a) The Supreme God
(b) The Guru of the Sufis
(c) The greatest of all Sufi saints
(d) The orthodox teacher who contests the Sufi beliefs
122. Khalsa Panth was created by Guru Gobind Singh in which year?
(a) 1599 (b) 1699 (c) 1707 (d) 1657
123. The best conductor of electricity among the following is
(a) Copper (b) Iron (c) Aluminium (d) Silver
124. Breeding and management of bees is known as
(a) Sericulture (b) Silviculture (c) Pisciculture (d) Apiculture
125. The vitamin necessary for coagulation of blood is
(a) Vitamin B (b) Vitamin C (c) Vitamin K (d) Vitamin E
126. The average life span of red blood corpuscles is about
(a) 100-200 days (b) 100-120 days (c) 160-180 days (d) 150-200 days
127. Dormancy period of animals during winter season is called
(a) Aestivation (b) Regeneration (c) Hibernation (d) Mutation
128. The angle in which a cricket ball should be hit to travel maximum horizontal distance is
(a) 60° with horizontal (b) 45° with horizontal
(c) 30° with horizontal (d) 15° with horizontal
129. The minimum number of geostationary satellites needed for uninterrupted global coverage is
(a) 3 (b) 4 (c) 2 (d) 1
130. Natural rubber is the polymer of
(a) Isoprene (b) Styrene (c) Butadiene (d) Ethylene
131. In addition to hydrogen, the other abundant element present on Sun's surface is
(a) Helium (b) Neon (c) Argon (d) Oxygen
132. Which of the following is the major constituent of LPG?
(a) Methane (b) Ethane (c) Propane (d) Butane
-

-
133. Flight Recorder is technically called
(a) Dark box (b) Blind box (c) Black box (d) Altitude meter
134. Which of the following is not a computer network?
(a) Wide area network (b) Local area network
(c) Personal network (d) Metropolitan area network
135. When a group of computers is connected together in a small area without the help of telephone lines, it is called
(a) Remote Communication Network (RCN)
(b) Local Area Network (LAN)
(c) Wide Area Network (WAN)
(d) Value Added Network (VAN)
136. Which one of the following elements is used in the manufacture of fertilizers?
(a) Fluorine (b) Potassium (c) Lead (d) Aluminium
137. The National Integration Council (NIC) is chaired by the
(a) Prime Minister (b) Finance Minister
(c) Home Minister (d) President of India
138. IUCN categorized major threatened species under
(a) seven classes (b) five classes (c) six classes (d) four classes
139. Minamata disease was caused by
(a) Mercury (b) Lead (c) Cadmium (d) Zinc
140. Ozone layer is present in
(a) Troposphere (b) Ionosphere (c) Stratosphere (d) Exosphere
141. The first atomic bomb was thrown over
(a) Nagasaki (b) Hiroshima (c) Tokyo (d) Hong Kong
142. Which of the following countries has entered into an agreement with India for the supply of Advanced Jet Trainer (HAWK)?
(a) Russia (b) USA (c) England (d) France
143. The name of the 'Cargo Ship' which sank off Mumbai coast recently, causing oil spill in the Arabian Sea, was
(a) Sagar Jyoti (b) Venus (c) MSC Chitra (d) Golden Eagle
144. Yuan is the currency of
(a) Japan (b) China (c) Italy (d) Yugoslavia
145. Santosh Trophy is associated with
(a) Hockey (b) Football (c) Basketball (d) Badminton
146. Kathakali classical dance originated in
(a) Kerala (b) Karnataka (c) Rajasthan (d) Tamil Nadu
147. The first effective vaccine against polio was prepared by
(a) JH Gibbon (b) Jonas ESalk (c) Robert Edwards (d) James Simpson
148. Who discovered sea route to India via the 'Cape of Good Hope'?
(a) Vasco da Gama (b) Amundsen
(c) Christopher Columbus (d) John Cabot
149. The 16 years old school boy, Arjun Vajpai who became the youngest Indian to successfully climb the world's highest peak, Mount Everest, on May 22, 2010, is from which state?
(a) Uttar Pradesh (b) Madhya Pradesh
(c) National Capital Territory of Delhi (d) Uttarakhand
150. Which one of the following is an 'Air-to-Air' missile?
(a) Prithvi (c) Akash (b) Agni (d) Astra

KEY

1.b 2.c 3.a 4.a 5.b 6.b 7.b 8.b 9.b 10.c 11.d 12.a 13.d 14.b 15.d 16.a
17.a 18.b 19.a 20.c 21.b 22.c 23.d 24.b 25.b 26.d 27.d 28.b 29.d 30.d 31.c 32.a 33.a
34.b 35.d 36.c 37.b 38.b 39.d 40.c 41.c 42.b 43.c 44.d 45.d 46.b 47.b 48.c 49.c 50.a
51.d 52.c 53.c 54.b 55.b 56.d 57.d 58.d 59.b 60.a 61.b 62.c 63.a 64.a 65.b 66.a 67.b
68.d 69.c 70.d 71.d 72.b 73.a 74.a 75.d 76.d 77.b 78.b 79.c 80.b 81.b 82.d 83.d
84.a 85.a 86.b 87.c 88.c 89.a 90.b 91.c 92.a 93.d 94.c 95.a 96.a 97.c 98.a 99.d
100.b 101.a 102.b 103.d 104.d 105.a 106.c 107.d 108.a 109.b 110.d 111.d 112.a 113.c 114.d 115.d
116.b 117.c 118.a 119.a 120.b 121.b 122.a 123.d 124.d 125.c 126.b 127.c 128.b 129.c 130.a 131.a
132.d 133.c 134.c 135.b 136.b 137.a 138.b 139.a 140.a 141.b 142.b 143.c 144.b 145.b 146.a 147.b
148.a 149.a 150.c

www.eenadupratibha.net